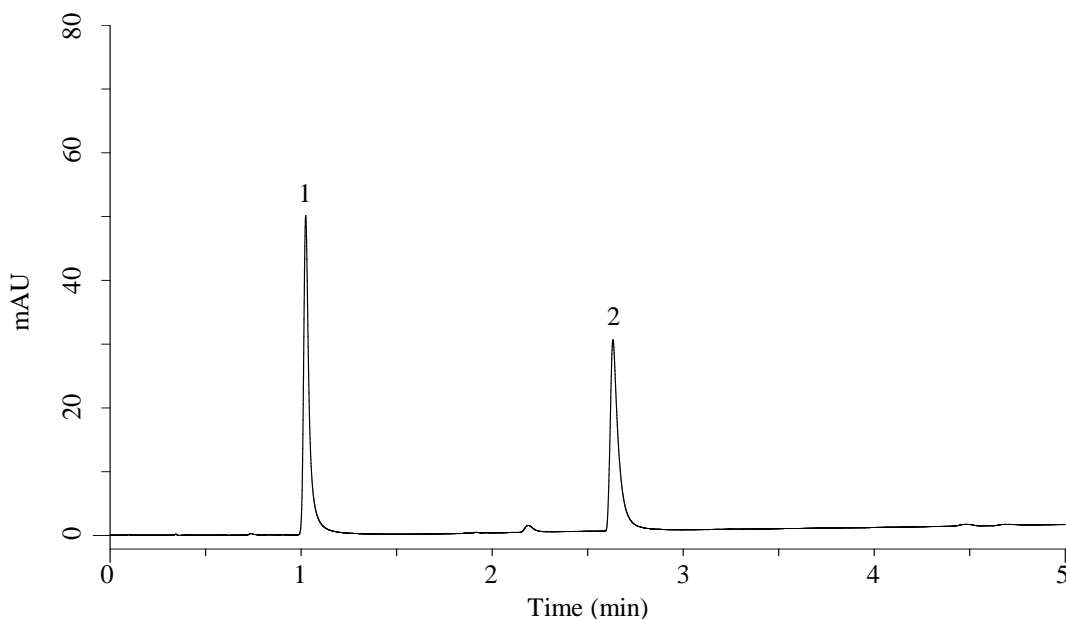


InertSearch for LC

Inertsil Applications

Analysis of Thiamine and Thiamine pyrophosphate

Data No. LB769-0806



Conditions

Column : InertSustain AX-C18 (GL Sciences Inc.)
(3 μ m, 150 x 2.1 mm I.D., Metal-free hardware)
Column Cat. No. : 5020-91059
Eluent : A) 100 mM HCOONH₄ in (CH₃CN/H₂O =50/50, v/v)
B) 10 mM HCOONH₄ in H₂O

Analyte:

1. Thiamine
2. Thiamine pyrophosphate
(100 mg/L each)

Time (min)	A (Vol%)	B (Vol%)
0.0	1	99
10.0	50	50

Flow Rate : 0.3 mL/min
Col. Temp. : 40 °C
Detection : UV 254 nm
Injection Vol. : 1 μ L