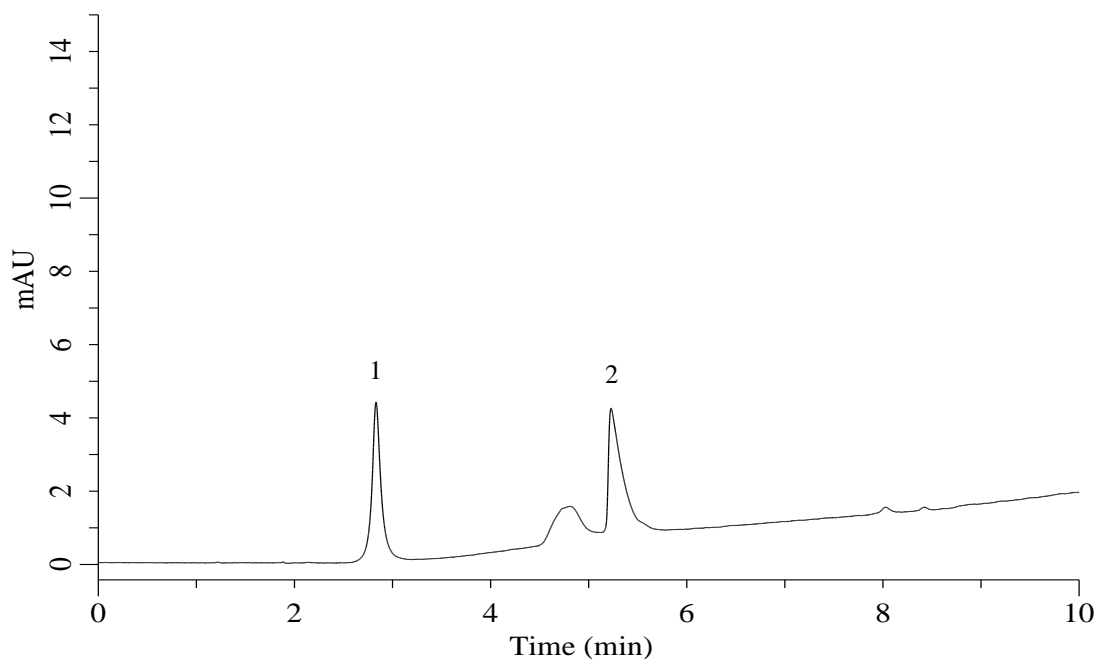


Analysis of Pyruvic acid and Phosphoenolpyruvic acid



Conditions

Column : InertSustain AX-C18 (GL Sciences Inc.)
 (3 μ m, 150 x 2.1 mm I.D., Metal-free hardware)

Column Cat. No. : 5020-91059

Eluent : A) 200 mM HCOONH₄ in (CH₃CN/H₂O = 50/50, v/v)
 B) 10 mM HCOONH₄ in H₂O

Analyte:

1. Pyruvic acid
 2. Phosphoenolpyruvic acid
 (200 mg/L each)

Time (min)	A (Vol%)	B (Vol%)
0.0	1	99
10.0	40	60

Flow Rate : 0.3 mL/min
Col. Temp. : 40 °C
Detection : UV 254 nm
Injection Vol. : 2 μ L
Sample : Standard