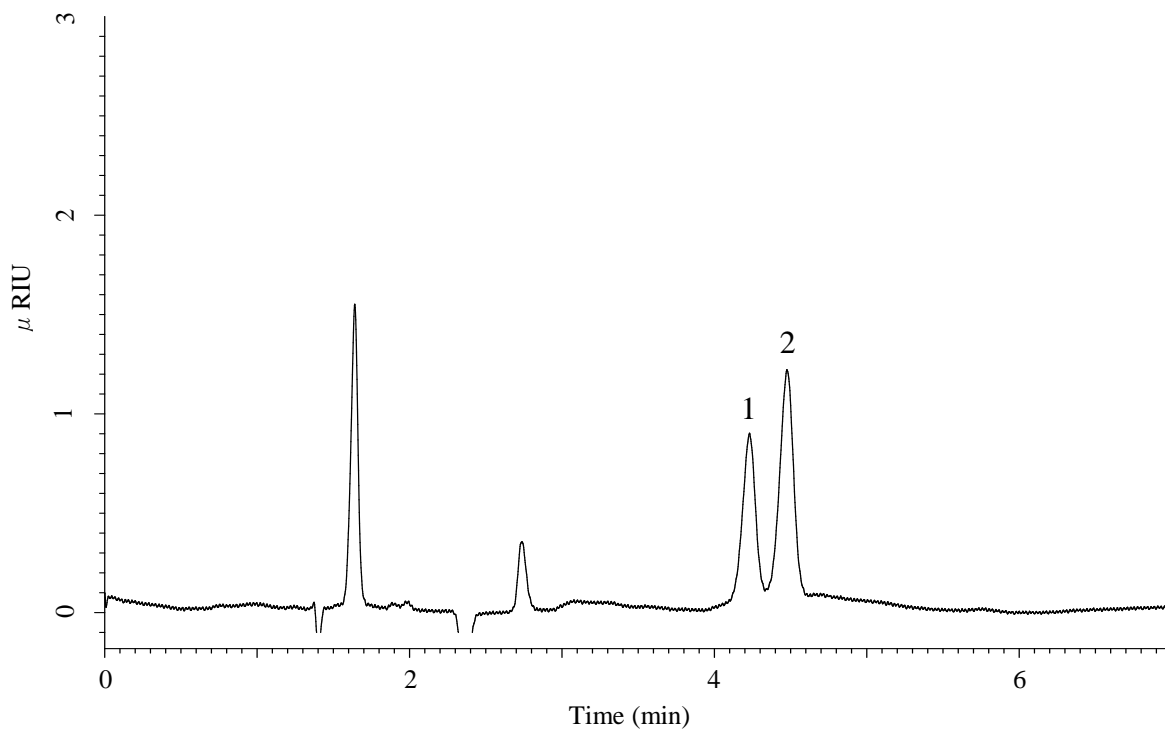


InertSearch for LC

Inertsil Applications

Analysis of Sugar phosphates

Data No. LB777-0806



Conditions

Column : InertSustain AX-C18 (GL Sciences Inc.)
(3 μ m, 150 x 4.6 mm I.D.)
Column Cat. No. : 5020-91051
Eluent : (10 mM HCOONH₄ + 0.1% HCOOH) in H₂O
Flow Rate : 1.0 mL/min
Col. Temp. : 40 °C
Detection : RI
Injection Vol. : 5 μ L
Sample : Standard

Analyte:

1. Glucose-1-phosphate
2. Glucose-6-phosphate
(2,500 mg/L each)