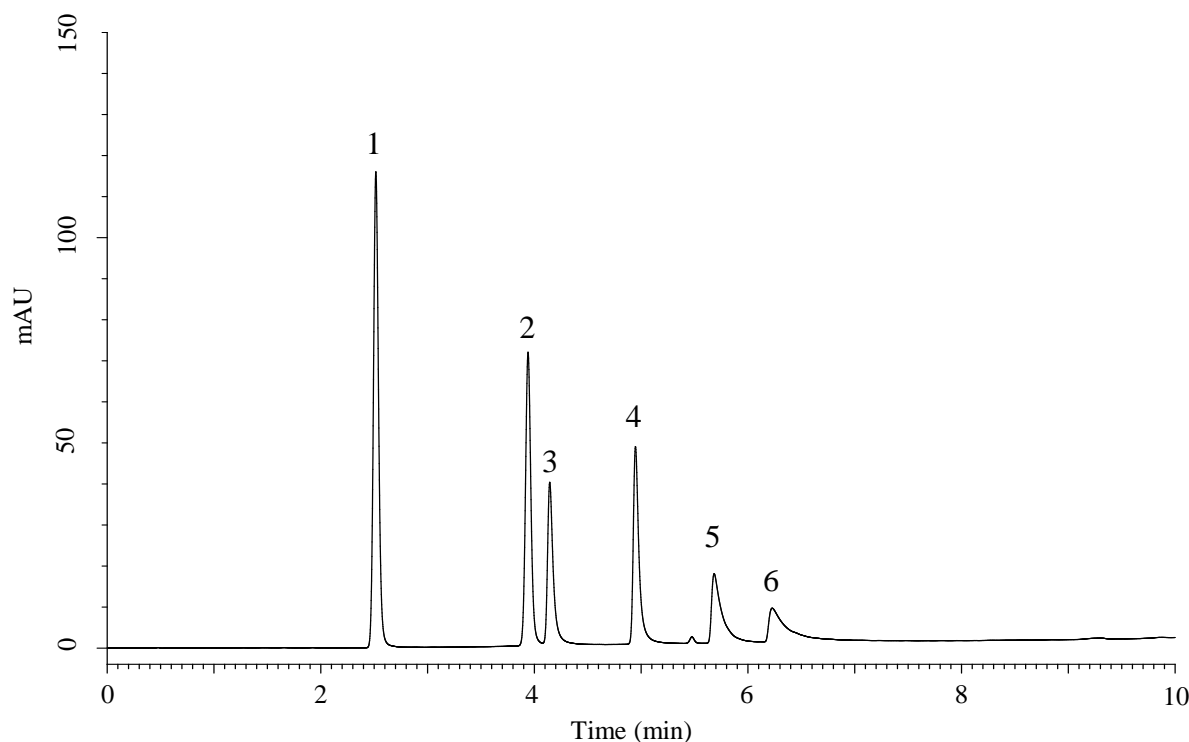


## Analysis of ATP and its related compounds



### Conditions

**Column** : InertSustain AX-C18 (GL Sciences Inc.)  
 (3  $\mu$  m, 150 x 2.1 mm I.D., Metal-free hardware)

**Column Cat. No.** : 5020-91059

**Eluent** : A) 200 mM HCOONH<sub>4</sub> in  
 (CH<sub>3</sub>CN/H<sub>2</sub>O = 50/50, v/v)  
 B) 10 mM HCOONH<sub>4</sub> in H<sub>2</sub>O

Time (min)	A (vol%)	B (vol%)
0.0	2	98
10.0	50	50

**Flow Rate** : 0.3 mL/min

**Col. Temp.** : 40 °C

**Detection** : UV 254 nm

**Injection Vol.** : 1  $\mu$  L

**Sample** : Standard

### Analyte:

1. Hypoxanthine
  2. Inosine
  3. Inosinic acid (IMP)
  4. Adenosine monophosphate (AMP)
  5. Adenosine diphosphate (ADP)
  6. Adenosine triphosphate (ATP)
- (100 mg/L each)