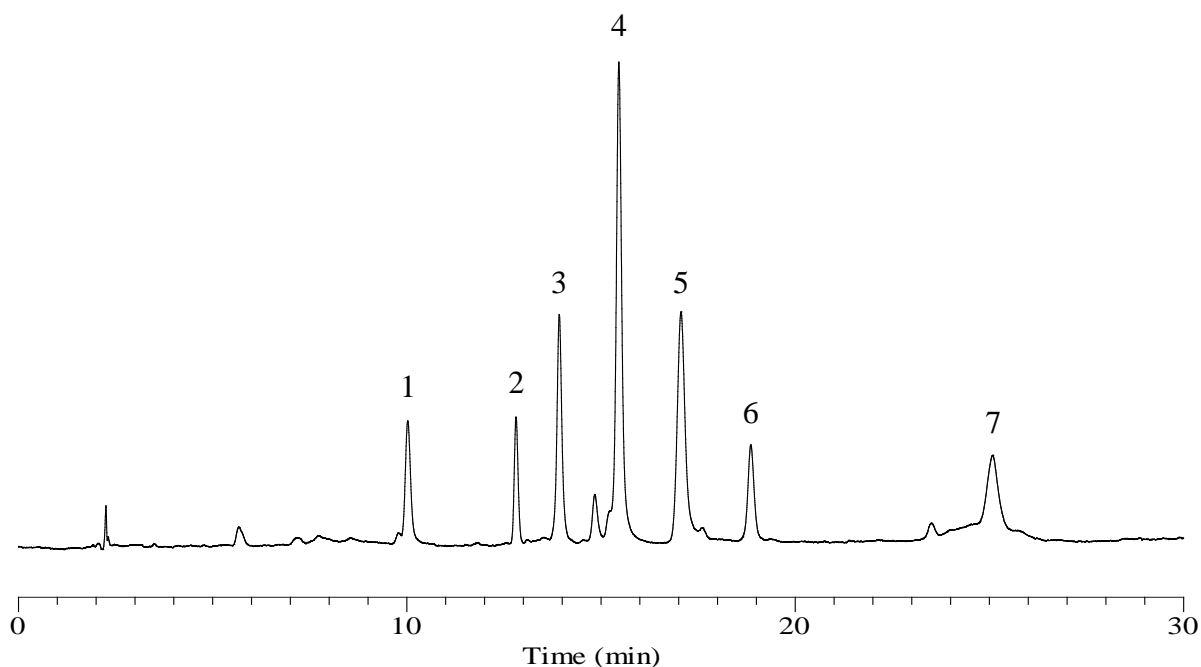


# InertSearch™ for LC

Inertsil® Applications

## Analysis of Peptides and Proteins

Data No. LB797-0000



### Conditions

**Column** : ProteoSil 300-C8 (GL Sciences Inc.)  
(5  $\mu$  m, 150 x 4.6 mm I.D.)  
**Column Cat. No.** : 5020-42108  
**Eluent** : A) 0.1 % TFA in (CH<sub>3</sub>CN/H<sub>2</sub>O = 90/10, v/v)  
B) 0.1 % TFA in H<sub>2</sub>O

Time (min)	A (vol%)	B (vol%)
0.0	20	80
25.0	60	40
30.0	60	40

**Flow Rate** : 1.0 mL/min  
**Col. Temp.** : 30 °C  
**Detection** : UV 280 nm  
**Sample** : Standard

### Analyte :

1. Ribonuclease A (M.W. 13,700)
2. Insulin (M.W. 6,000)
3. Cytochrome C (M.W. 13,000)
4. Lysozyme (M.W. 14,000)
5. BSA (M.W. 66,000)
6. STI (M.W. 21,000)
7. Ovalbumin (M.W. 45,000)