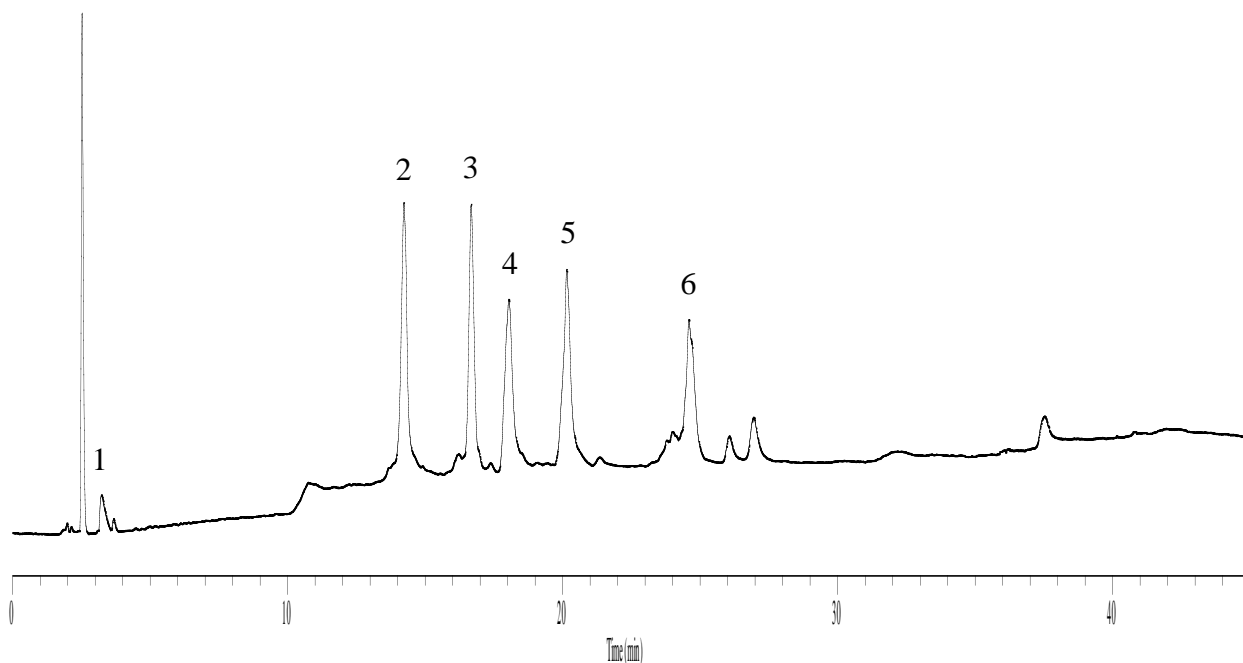


InertSearch™ for LC

Inertsil® Applications

Analysis of Peptides and Proteins

Data No. LB798-0000



Conditions

- Column** : ProteoSil 300-C18 (GL Sciences Inc.)
(5 μ m, 150 x 4.6 mm I.D.)
- Column Cat. No.** : 5020-42118
- Eluent** : A) CH₃CN/0.05 % TFA in H₂O = 80/20, v/v
B) CH₃CN/0.05 % TFA in H₂O = 10/90, v/v

Time (min)	A (vol%)	B (vol%)
0.0	0	100
30.0	100	0
40.0	100	0

- Flow Rate** : 1.0 mL/min
- Col. Temp.** : 30 °C
- Detection** : UV 280 nm
- Sample** : Standard

Analyte :

1. DL-Phenylalanine (M.W. 165)
2. Cytochrome C (M.W. 13,000)
3. Lysozyme (M.W. 14,000)
4. BSA (M.W. 66,000)
5. α -Chymotrypsinogen A (M.W. 25,600)
6. Ovalbumin (M.W. 45,000)