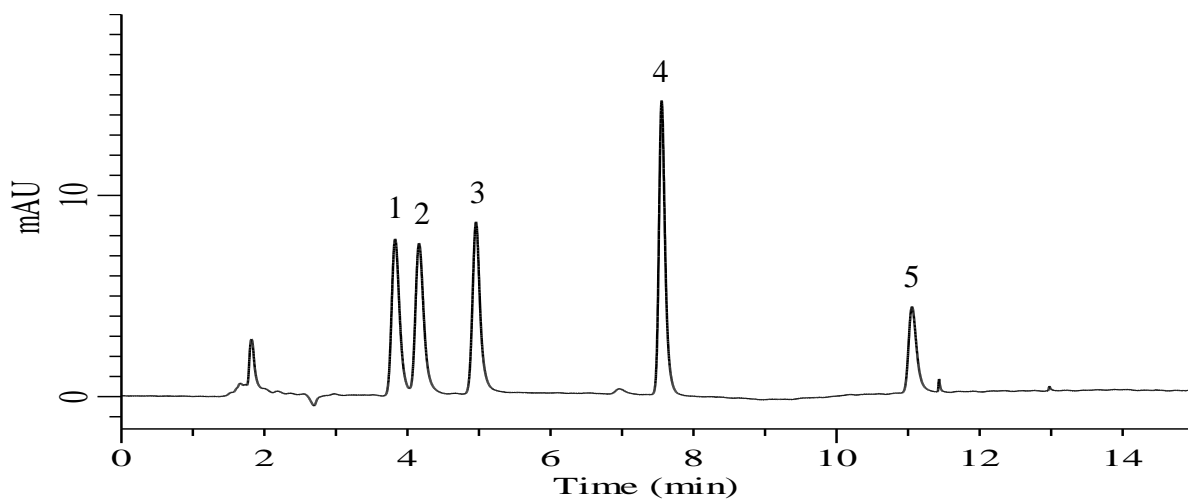


# InertSearch for LC

Inertsil Applications

## Analysis of Peptides

Data No. LB799-0806



### Conditions

**Column** : ProteoSil HILIC (GL Sciences Inc.)  
(1.9  $\mu$  m, 150 x 2.1 mm I.D.)  
**Column Cat. No.** : 5020-42240  
**Eluent** : A) CH<sub>3</sub>CN  
B) (10 mM HCOONH<sub>4</sub> + 0.1% HCOOH) in H<sub>2</sub>O

Time (min)	A (vol%)	B (vol%)
0.0	80	20
15.0	50	50

**Flow rate** : 0.2 mL/min  
**Col. Temp.** : 40 °C  
**Detection** : UV 254 nm  
**Injection Vol.** : 1  $\mu$  L  
**Sample** : Standard

### Analyte :

1. Leucine-Enkephalin 500 mg/L  
2. Methionine-Enkephalin 500 mg/L  
3. Angiotensin II (Human) 500 mg/L  
4. Val-Tyr-Val 500 mg/L  
5. Gly-Tyr 500 mg/L