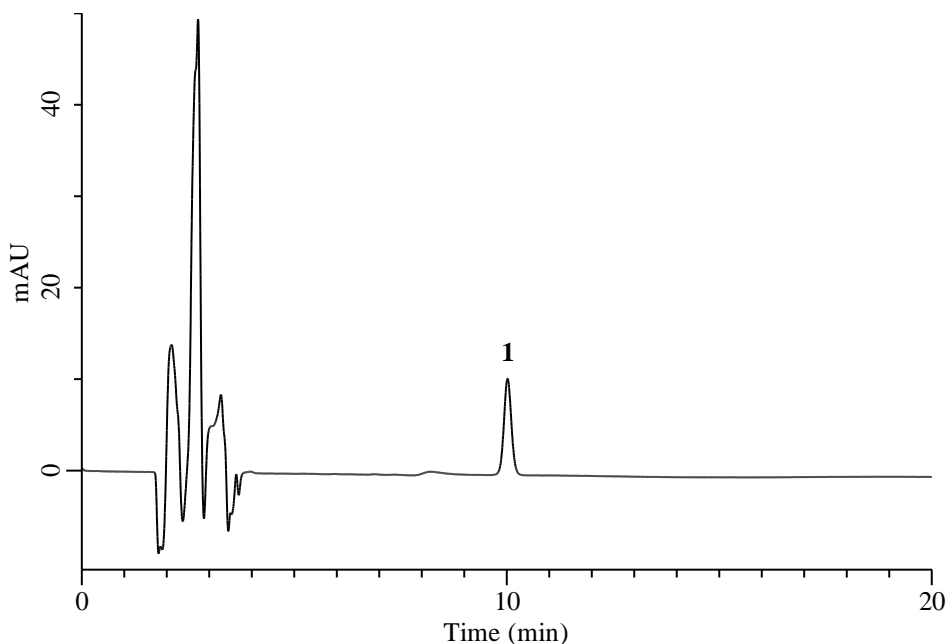


Analysis of 1,3-Dicyclohexylurea

(Under the Condition of the draft for the Japanese Pharmacopoeia, Acetohexamide)



Conditions

System : Chromaster HPLC system (HITACHI)
Column : InertSustain C18 (GL Sciences Inc.)
 (5 μ m, 250 x 4.6 mm I.D.)
Column Cat. No. : 5020-07346
Eluent : Solution*
Flow Rate : 1.0mL/min
Col. Temp. : 25 °C
Detection : UV 210 nm
Injection Vol. : 50 μ L
Sample : Standard

Analyte:

1. 1,3-Dicyclohexylurea 5.7 mg/L

Theoretical plate number : 15,769 (\geq 10,000)

RSD of the peak area (%) (n=6) : 0.26 (\leq 2.0%)

* Dissolve 0.5 g of sodium hydroxide in 1000 mL of 0.05 mol/L sodium dihydrogen phosphate reagent and adjust pH 6.5 with 0.5 mol/L sodium hydroxide reagent. Add 500 mL of acetonitrile to 500 mL of this solution.