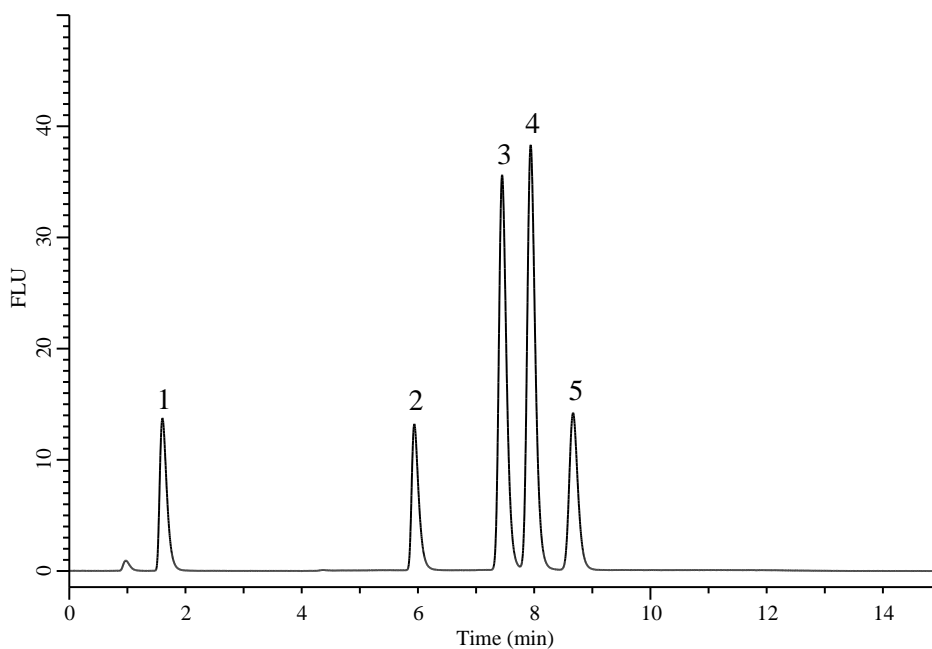


Analysis of Sesamin



Conditions

System : Chromaster HPLC system (HITACHI)
Column : Inertsil ODS-HL (GL Sciences Inc.)
 (HP 3 μ m, 75 x 3.0 mm I.D.)
Column Cat. No. : 5020-87323
Eluent : A) CH₃OH
 B) H₂O

Analyte:

1. Sesamol 10 mg/L
 2. Sesaminol 10 mg/L
 3. Sesamin 10 mg/L
 4. Episesamin 10 mg/L
 5. Sesamolin 10 mg/L

Time (min)	A (vol %)	B (vol %)
0.0	50	50
2.0	50	50
2.1	75	25
10.0	75	25
10.1	50	50
15.0	50	50

Flow Rate : 0.6 mL/min
Col. Temp. : 40 °C
Detection : FL Ex 280 nm Em 340 nm
Injection Vol. : 1 μ L
Sample : Standard