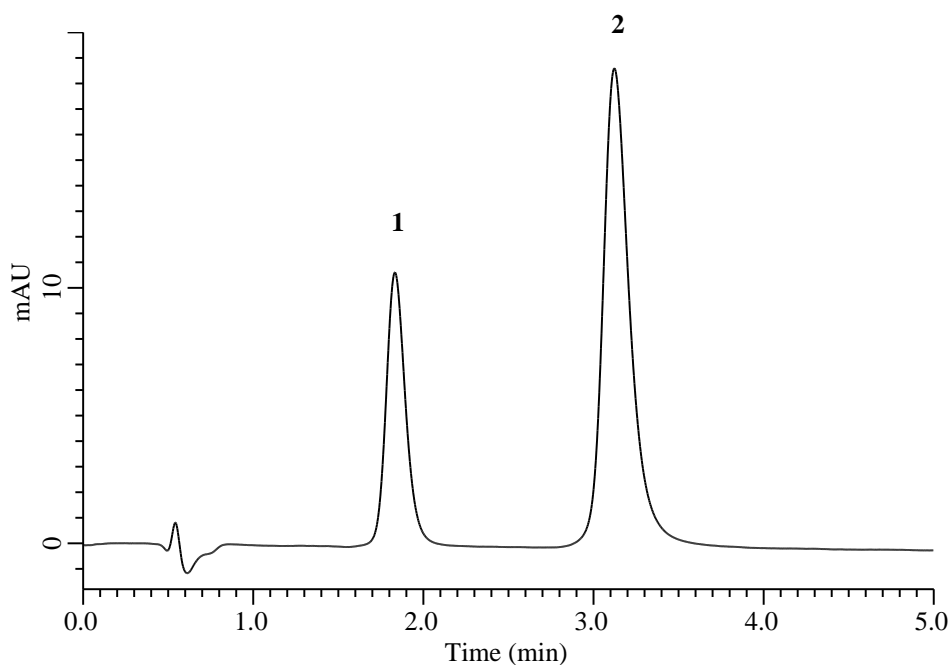


## Analysis of Metformin



### Conditions

**Column** : Inertsil CX (GL Sciences Inc.)  
 (5  $\mu$  m, 50 x 4.6 mm I.D.)  
**Column Cat. No.** : 5020-07142  
**Eluent** : A) CH<sub>3</sub>CN  
 B) 100 mM K<sub>2</sub>HPO<sub>4</sub> in H<sub>2</sub>O (pH 7.0, H<sub>3</sub>PO<sub>4</sub>)  
 A/B = 30/70, v/v  
**Flow Rate** : 1.2 mL/min  
**Col. Temp.** : 30 °C  
**Detection** : UV 255 nm  
**Injection Vol.** : 10  $\mu$  L  
**Sample** : Standard in 0.025 M sodium chloride

### Analyte:

1. Sitagliptin	72 mg/L
2. Metformin	55 mg/L