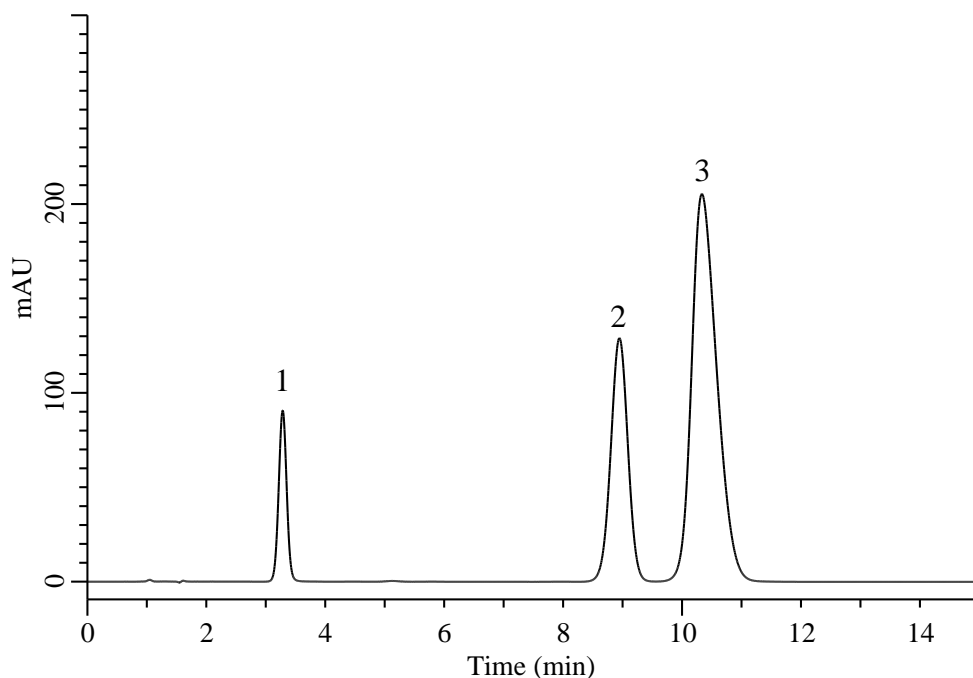


Analysis of Ampicillin and Sulbactam

(Under the Condition of the Japanese Pharmacopoeia 18th, Ampicillin Sodium and Sulbactam Sodium for Injection)



Conditions

System : Chromaster HPLC system (HITACHI)
Column : Inertsil ODS-HL (GL Sciences Inc.)
 (10 μ m, 150 x 4.6 mm I.D.)
Column Cat. No. : 5020-89550
Eluent : CH₃CN/Buffer* = 2/23, v/v
Flow Rate : 1.4 mL/min
Col. Temp. : 35 °C
Detection : UV 215 nm
Injection Vol. : 10 μ L
Sample : Standard

Analyte:

1.Sulbactam 250 mg/L
 2.Parahydroxybenzoic acid (I.S.) 100 mg/L
 3.Ampicillin 500 mg/L

Resolution (1,2) : 14.64 (\geq 2.0)
 Resolution (2,3) : 2.15 (\geq 2.0)
 RSD of the
 peak area of 1 (%) (n=6) : 0.10 (\leq 1.0%)

* Dissolve 3.1 g of sodium dihydrogenphosphate dihydrate in 1000 mL of water and adjust pH to 3.0 using diluted phosphoric acid (1 \rightarrow 10).