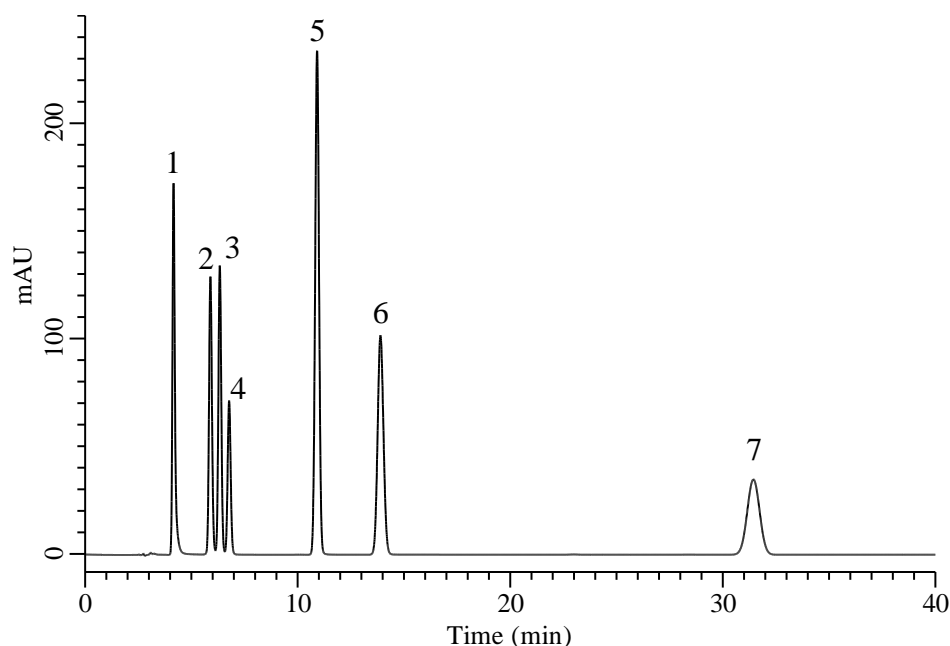


Analysis of ATP related compounds and Guanylic acid



Conditions

System : Chromaster HPLC system (HITACHI)
Column : InertSustain AQ-C18 (GL Sciences Inc.)
 (5 μ m, 250 x 4.6 mm I.D.)
Column Cat. No. : 5020-89731
Eluent : 25 mM CH₃COONa in H₂O (pH 5.0, H₃PO₄)
Flow Rate : 1.0 mL/min
Col. Temp. : 40 °C
Detection : UV 260 nm
Injection Vol. : 10 μ L
Sample : Standard

Analyte:

1. 5'-ATP	100 mg/mL
2. 5'-ADP	100 mg/mL
3. Guanylic acid	100 mg/mL
4. 5'-IMP	100 mg/mL
5. Hypoxanthine	100 mg/mL
6. 5'-AMP	100 mg/mL
7. Inosine	100 mg/mL