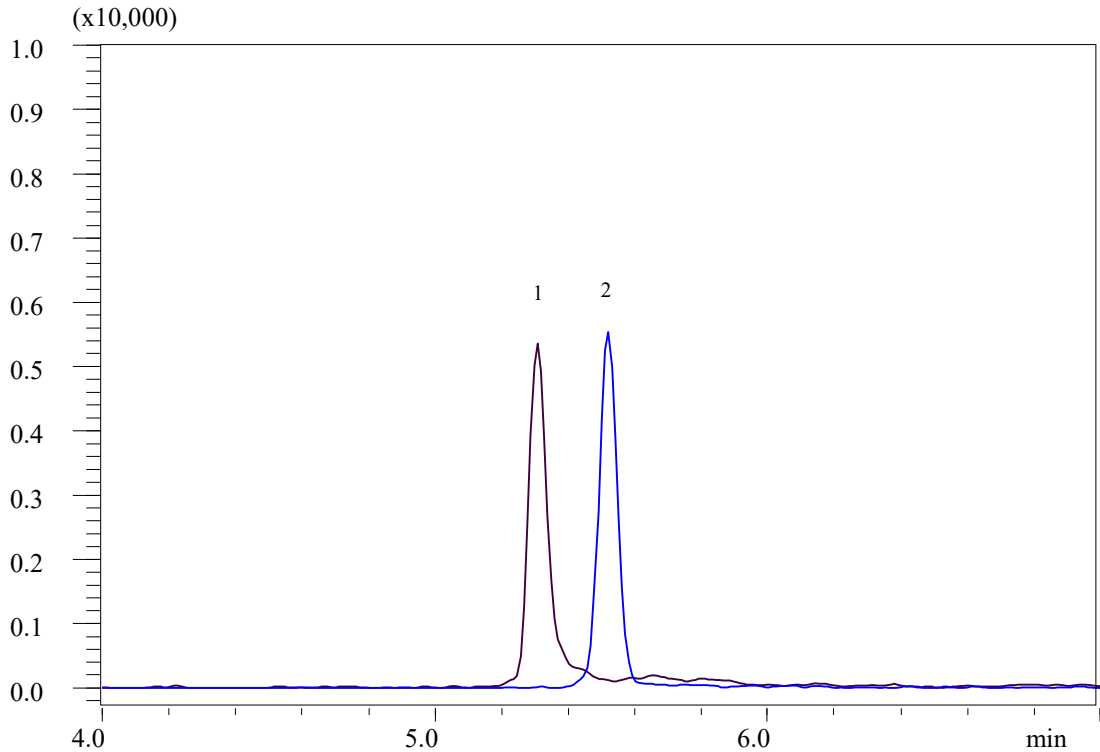


InertSearch for LC

Inertsil Applications

Analysis of Fosetyl and Glyphosate

Data No. LB813- 0972



Conditions

System : Nexera HPLC system (Shimadzu)
LCMS-8030 Plus (Shimadzu)

Column : IM Column InertSustain AQ-C18
(GL Sciences Inc.)
(3 μ m, 50 x 2.1 mm I.D.)

Column Cat. No. : 5020-32011

Eluent : A) CH₃CN
B) 5 mM IPC-DBAA in H₂O

Analyte: Q1/Q3
1. Fosetyl 109.00/81.00
2. Glyphosate 168.10/62.95
(0.5 mg/L each)

Time (min)	A (vol %)	B (vol %)
0.0	1	99
12.0	100	0
17.0	100	0

Flow Rate : 0.4 mL/min
Col. Temp. : 40 °C
Detection : MS/MS (ESI, Positive, SRM)

Nebulizing gas flow	Heating gas flow	Interface temperature	DL temperature	Heat block temperature	Drying gas flow
2 L/min	15 L/min	300 °C	250 °C	400 °C	15 L/min

Injection Vol. : 1 μ L
Sample : Standard