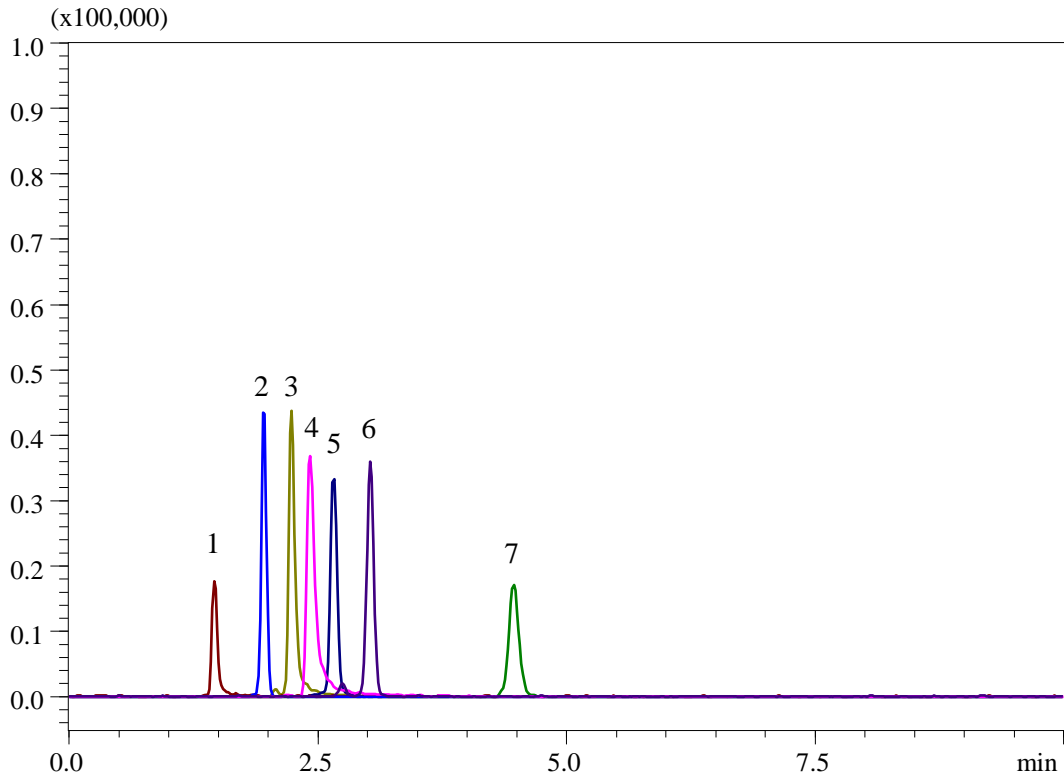


## Analysis of Phospholipids



### Conditions

<b>System</b>	: Nexera HPLC system (Shimadzu) LCMS-8030 Plus (Shimadzu)	<b>Analyte:</b>	Q1/Q3
<b>Column</b>	: IM Column InertSustainSwift C18 (GL Sciences Inc.) (3 μm, 150 x 2.1 mm I.D.)	1. Lysophosphatidic acid	789.50 /184.00 500 μg/L
<b>Column Cat. No.</b>	: 5020-32017	2. Phosphatidylinositol	1791.40 /606.35 100 μg/L
<b>Eluent</b>	: 5 mM HCOONH <sub>4</sub> in CH <sub>3</sub> OH	3. Phosphatidic acid	853.40 /576.25 100 μg/L
<b>Flow Rate</b>	: 0.3 mL/min	4. Phosphatidylserine	439.20 /155.00 100 μg/L
<b>Col. Temp.</b>	: 40 °C	5. Phosphatidylethanolamine	1467.90 /599.35 100 μg/L
<b>Detection</b>	: MS/MS (ESI, Positive, SRM)	6. Phosphatidylcholine	769.40 /628.25 50 μg/L
		7. Cardiolipin	693.25 /578.25 500 μg/L

Nebulizing gas flow	Heating gas flow	Interface temperature	DL temperature	Heat block temperature	Drying gas flow
2 L/min	15 L/min	300 °C	250 °C	400 °C	15 L/min

**Injection Vol.** : 1 μL  
**Sample** : Standard