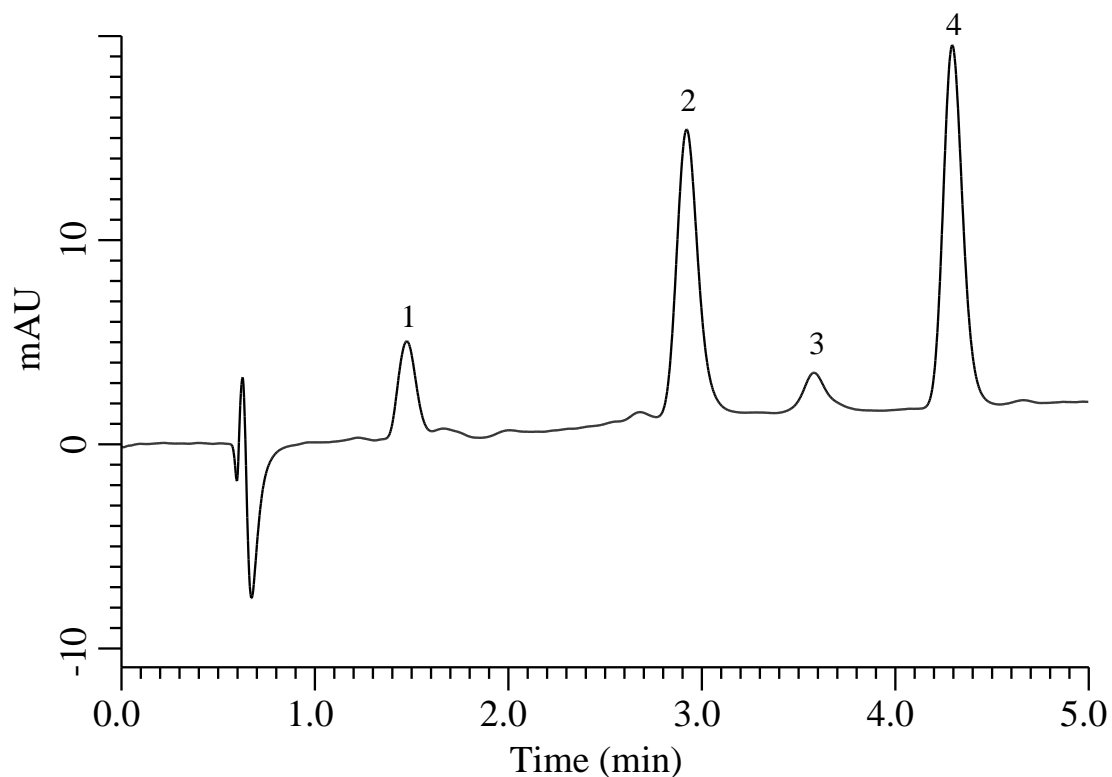


## Analysis of Carotenoids



### Conditions

**System** : Chromaster HPLC system (HITACHI)  
**Column** : InertSustain C30 (GL Sciences Inc.)  
 (3  $\mu$  m, 50 x 4.6 mm I.D.)  
**Column Cat. No.** : 5020-17170  
**Eluent** : A) CH<sub>3</sub>CN  
 B) C<sub>2</sub>H<sub>5</sub>OH

### Analyte:

1. Zeaxanthin 0.25 mg/L  
 2. Astaxanthin 1.0 mg/L  
 3. Lutein 0.25 mg/L  
 4. Canthaxanthin 1.0 mg/L

Time (min)	A (vol%)	B (vol%)
0.0	80	20
5.0	0	100

**Flow Rate** : 1.0 mL/min  
**Col. Temp.** : 35 °C  
**Detection** : VIS 450 nm  
**Injection Vol.** : 20  $\mu$  L  
**Sample** : Standard