

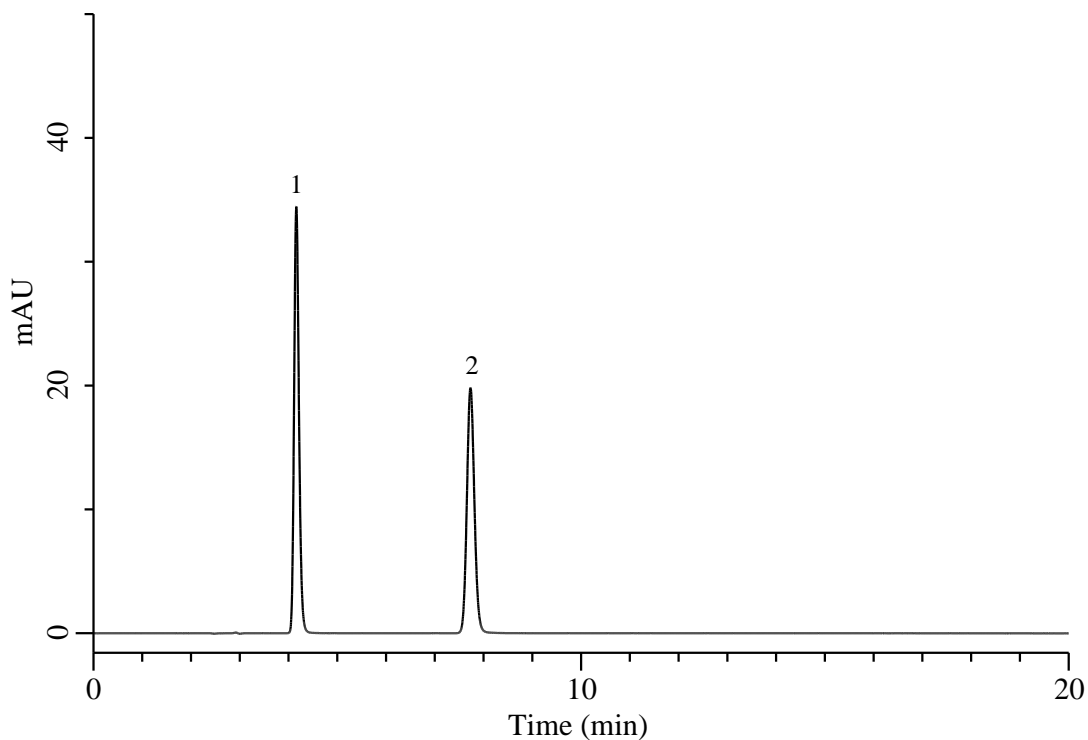
InertSearch for LC

Inertsil Applications

Analysis of Nicotinic acid and Nicotinamide

(Under the Condition of food additive analysis method in food)

Data No. LB826-1087



Conditions

System : Chromaster HPLC system (HITACHI)

Column : InertSustain C18 (GL Sciences Inc.)
(5 μ m, 250 x 4.6 mm I.D.)

Column Cat. No. : 5020-07346

Eluent : Solution*

Flow Rate : 1.0 mL/min

Col. Temp. : 25 °C

Detection : UV 254 nm

Injection Vol. : 10 μ L

Sample : Standard

Analyte:

1. Nicotinic acid

2. Nicotinamide

(10 mg/L each)

*Add 1.0 g of Potassium dihydrogen phosphate and 25 mL of Methanol to 224 mL of water.