

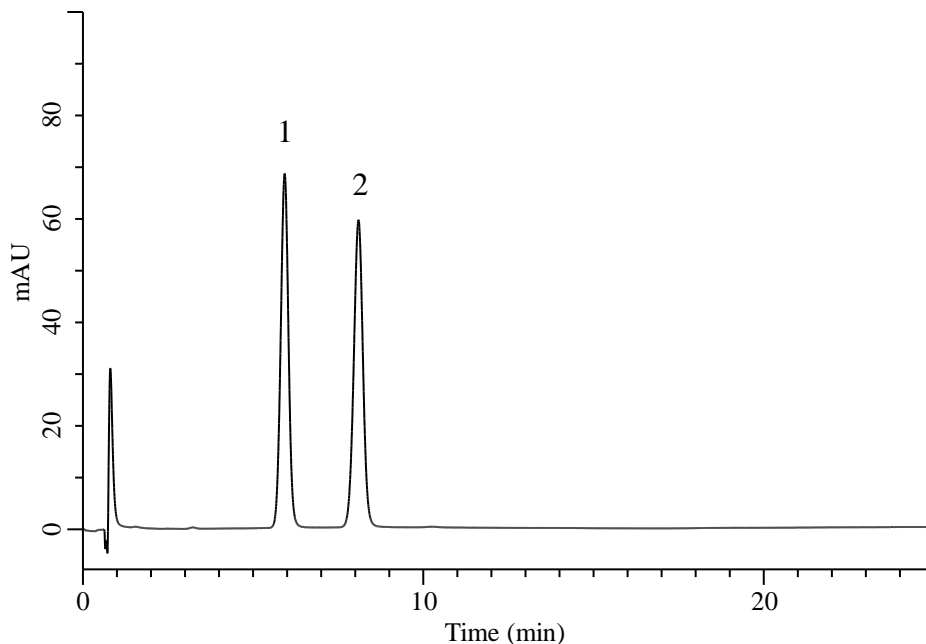
# InertSearch™ for LC

Inertsil® Applications

## Analysis of Clobetasone butyrate standard

(Under the Condition of the draft for the Japanese Pharmaceutical Codex)

Data No. LB827-7111



### Conditions

**System** : Chromaster HPLC system (HITACHI)  
**Column** : InertSustainSwift C18 (GL Sciences Inc.)  
(3  $\mu$  m, 75 x 3.0 mm I.D.)  
**Column Cat. No.** : 5020-88133  
**Eluent** : A) H<sub>2</sub>O  
B) C<sub>2</sub>H<sub>5</sub>OH(95)  
A/B = 3/2 ,v/v  
**Flow Rate** : 0.77 mL/min  
**Col. Temp.** : 60 °C  
**Detection** : UV 251 nm  
**Injection Vol.** : 4  $\mu$  L  
**Sample** : Standard

### Analyte:

1. Betamethasone valerate 1 mg/L  
2. Clobetasone butyrate 1 mg/L

Resolution (1, 2) : 4.8 ( $\geq$  4)