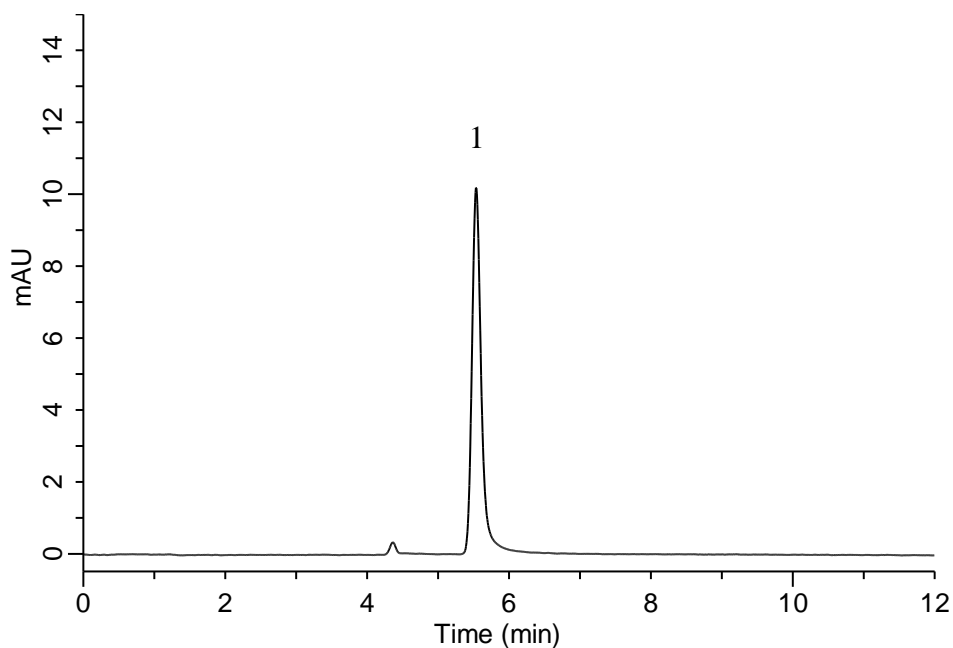


## Analysis of Citric acid

(Under the Condition of food additive analysis method in food, Citric acid and its salts)



### Conditions

**System** : Chromaster HPLC system (HITACHI)  
**Column** : InertSphere FA-1 (GL Sciences Inc.)  
(9  $\mu$  m, 300 x 7.8 mm I.D.)  
**Column Cat. No.** : 5020-11003  
**Eluent** : 3 mmol/L HClO<sub>4</sub> in H<sub>2</sub>O  
**Flow Rate** : 1.0 mL/min  
**Col. Temp.** : 40 °C  
**Detection** : UV 220 nm  
**Injection Vol.** : 10  $\mu$  L  
**Sample** : Standard

### **Analyte:**

1. Citric acid 200  $\mu$  g/mL