

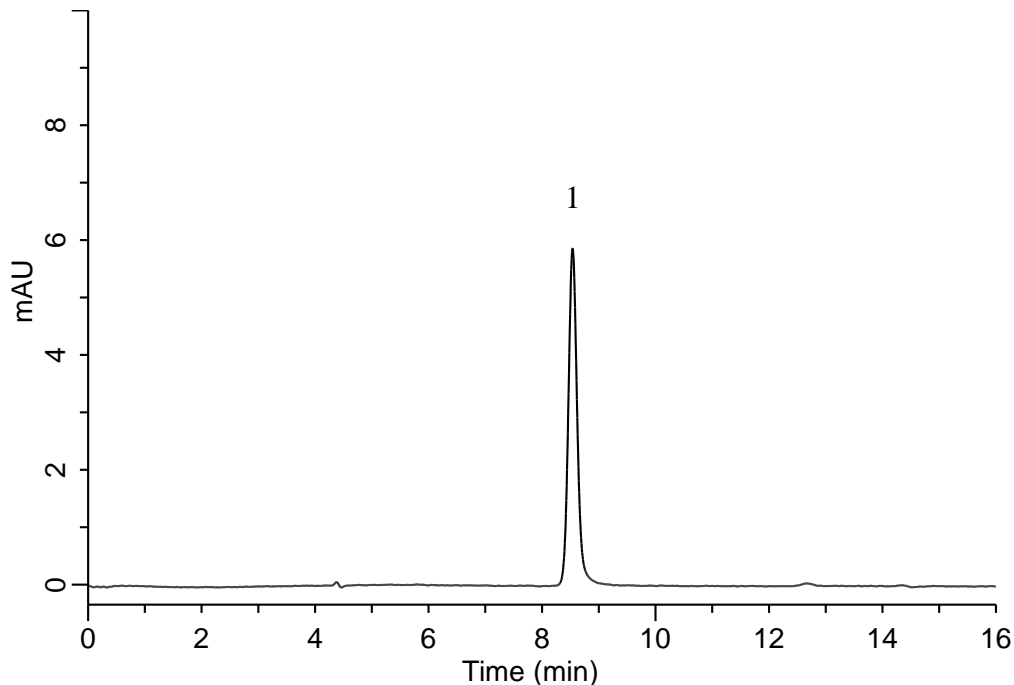
InertSearch™ for LC

Inertsil® Applications

Analysis of Lactic acid

(Under the Condition of food additive analysis method in food, Lactic acid and its salts)

Data No. LB841-7111



Conditions

System : Chromaster HPLC system (HITACHI)
Column : InertSphere FA-1 (GL Sciences Inc.)
(9 μ m, 300 x 7.8 mm I.D.)

Column Cat. No. : 5020-11003

Eluent : 3 mmol/L HClO₄ in H₂O

Flow Rate : 1.0 mL/min

Col. Temp. : 40 °C

Detection : UV 220 nm

Injection Vol. : 10 μ L

Sample : Standard

Analyte:

1. Lactic acid 200 μ g/mL