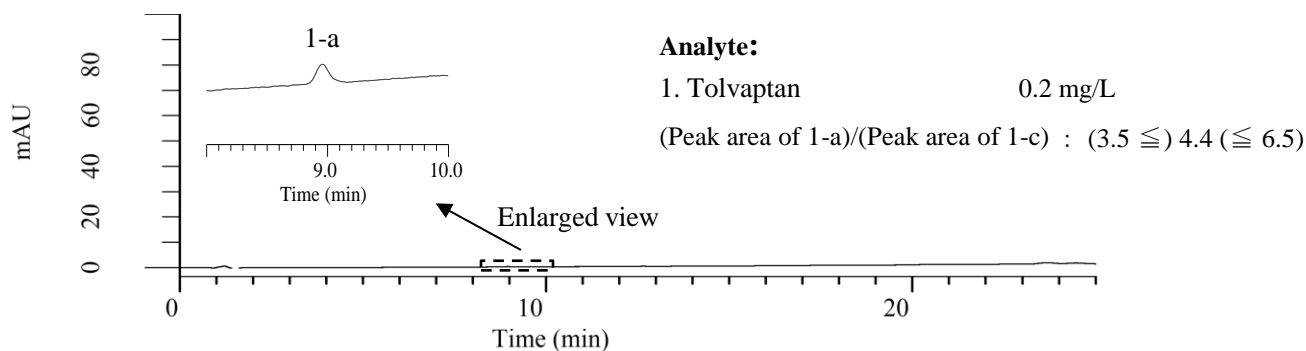


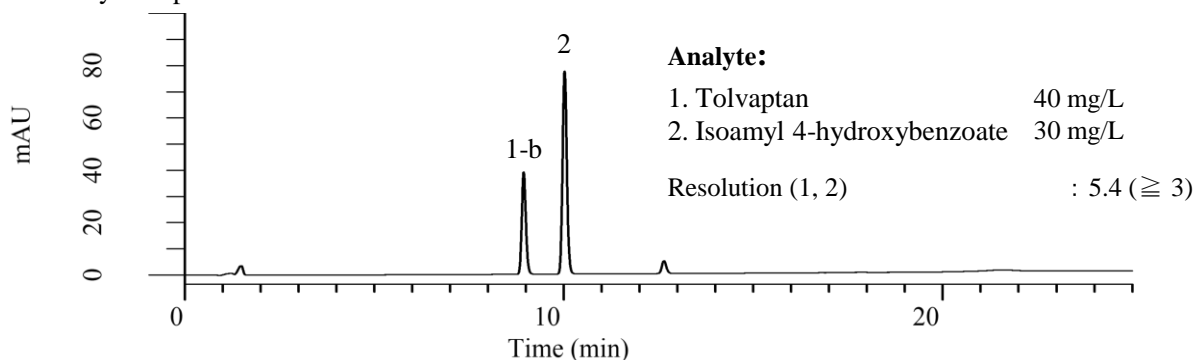
Analysis of Tolvaptan

(Under the Condition of the draft for the Japanese Pharmacopoeia 18th Supplement II)

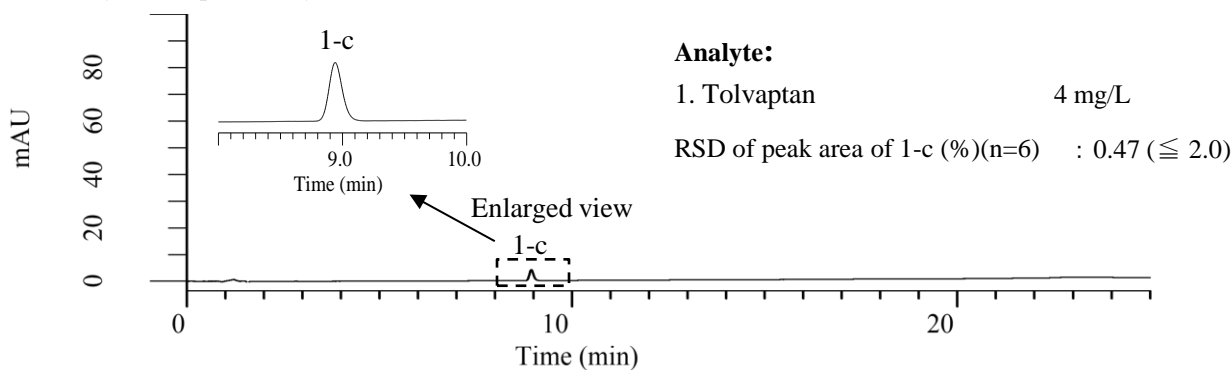
a. Test for required detectability



b. System performance



c. System repeatability



Conditions

System : Primaide HPLC system (HITACHI)
Column : Inertsil ODS-4 (GL Sciences Inc.)
 (3 μ m, 100 x 4.6 mm I.D.)
Column Cat. No. : 5020-04044
Eluent : A) CH₃CN/H₃PO₄ = 1000/1, v/v
 B) H₂O/H₃PO₄ = 1000/1, v/v

Flow Rate : 1.0 mL/min
Col. Temp. : 25 °C
Detection : UV 254 nm
Injection Vol. : 5 μ L
Sample : Standard

Time (min)	A (vol%)	B (vol%)
0.0	40	60
20.0	80	20
25.0	80	20