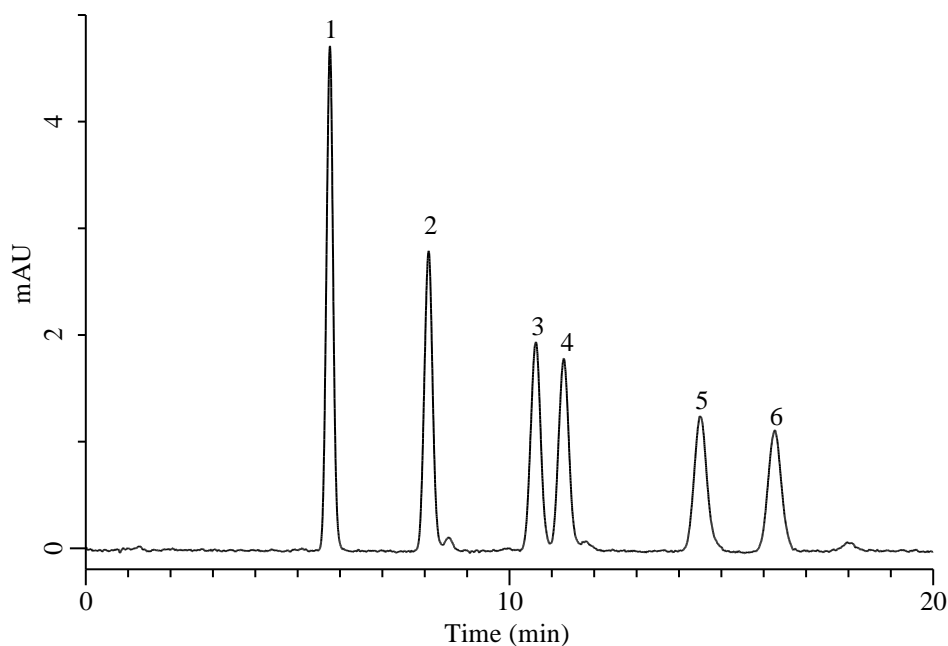


## Analysis of 6 kinds of Aldehydes (Detected by Pre-Column Method with DNPH)



### Conditions

**System** : Primaide HPLC system (HITACHI)  
**Column** : InertSustain C30 (GL Sciences Inc.)  
 (HP 3  $\mu$  m, 150 x 4.6 mm I.D.)  
**Column Cat. No.** : 5020-17184  
**Eluent** : A) CH<sub>3</sub>CN  
 B) H<sub>2</sub>O  
 A/B = 60/40, v/v  
**Flow Rate** : 1.0 mL/min  
**Col. Temp.** : 20 °C  
**Detection** : UV 360 nm  
**Injection Vol.** : 20  $\mu$  L  
**Sample** : Standard

### Analyte:

1. DNPH-Acetaldehyde	0.1 mg/L
2. DNPH-Propionaldehyde	0.1 mg/L
3. DNPH- <i>iso</i> -Butyraldehyde	0.1 mg/L
4. DNPH- <i>n</i> -Butyraldehyde	0.1 mg/L
5. DNPH- <i>iso</i> -Valeraldehyde	0.1 mg/L
6. DNPH- <i>n</i> -Valeraldehyde	0.1 mg/L