

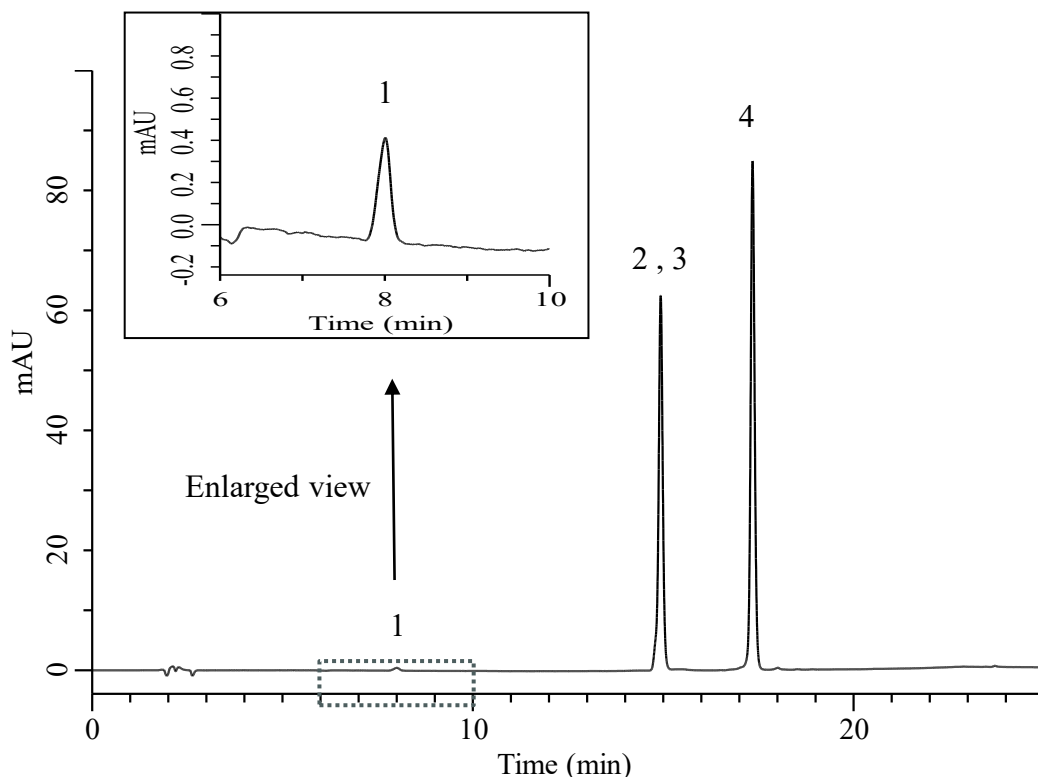
# InertSearch™ for LC

Inertsil® Applications

## Analysis of Natamycin (Analytical Method A)

(Under the Condition of food additive analysis method in food)

Data No. LB857-7111



### Conditions

**System** : Primaide HPLC system (HITACHI)  
**Column** : InertSustain AQ-C18 (GL Sciences Inc.)  
(5  $\mu$  m, 150 x 4.6 mm I.D.)  
**Column Cat. No.** : 5020-89730  
**Eluent** : A) 5% CH<sub>3</sub>COOH in CH<sub>3</sub>OH  
B) 5% CH<sub>3</sub>COOH in H<sub>2</sub>O

### Analyte:

1. Saccharin 5  $\mu$  g/mL  
2. Sorbic acid 5  $\mu$  g/mL  
3. Dehydroacetic acid 5  $\mu$  g/mL  
4. Natamycin 5  $\mu$  g/mL

Time (min)	A (vol %)	B (vol %)
0.0	0	100
2.0	0	100
20.0	100	0
25.0	100	0

**Flow Rate** : 1.0 mL/min  
**Col. Temp.** : 40 °C  
**Detection** : UV 304 nm  
**Injection Vol.** : 20  $\mu$  L  
**Sample** : Standard