

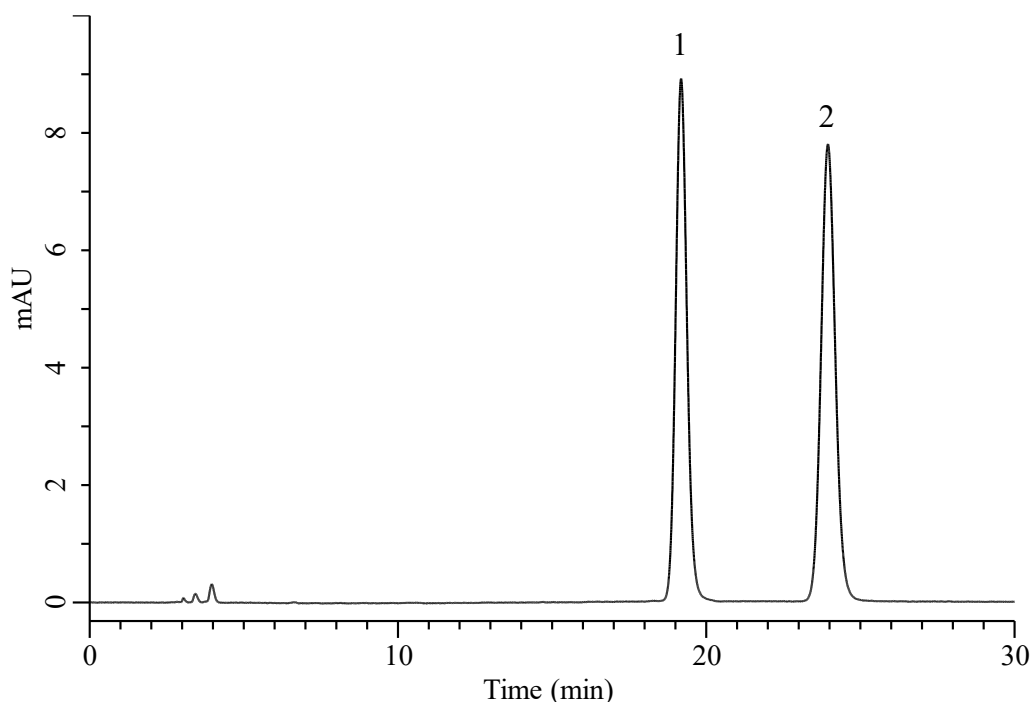
InertSearch™ for LC

Inertsil® Applications

Analysis of L-Ascorbic acid and Erythorbic acid

(Under the Condition of food additive analysis method in food , L-Ascorbic Acid and Its Compounds, Erythorbic Acid and Sodium Erythorbate)

Data No. LB861-7111



Conditions

System : Primaide HPLC system (HITACHI)
Column : InertSustain NH2 (GL Sciences Inc.)
(5 μ m, 250 x 4.6 mm I.D.)
Column Cat. No. : 5020-89951
Eluent : A) CH₃CN
B) 10 mM NaH₂PO₄
C) 0.03% Homocysteine in H₂O
D) CH₃OH
A/B/C/D = 600/100/30/30 , v/v/v/v
Flow Rate : 1.0 mL/min
Col. Temp. : 25 °C
Detection : UV 270 nm
Injection Vol. : 5 μ L
Sample : Standard

Analyte:

1. Erythorbic acid 20 μ g/mL
2. L-Ascorbic acid 20 μ g/mL