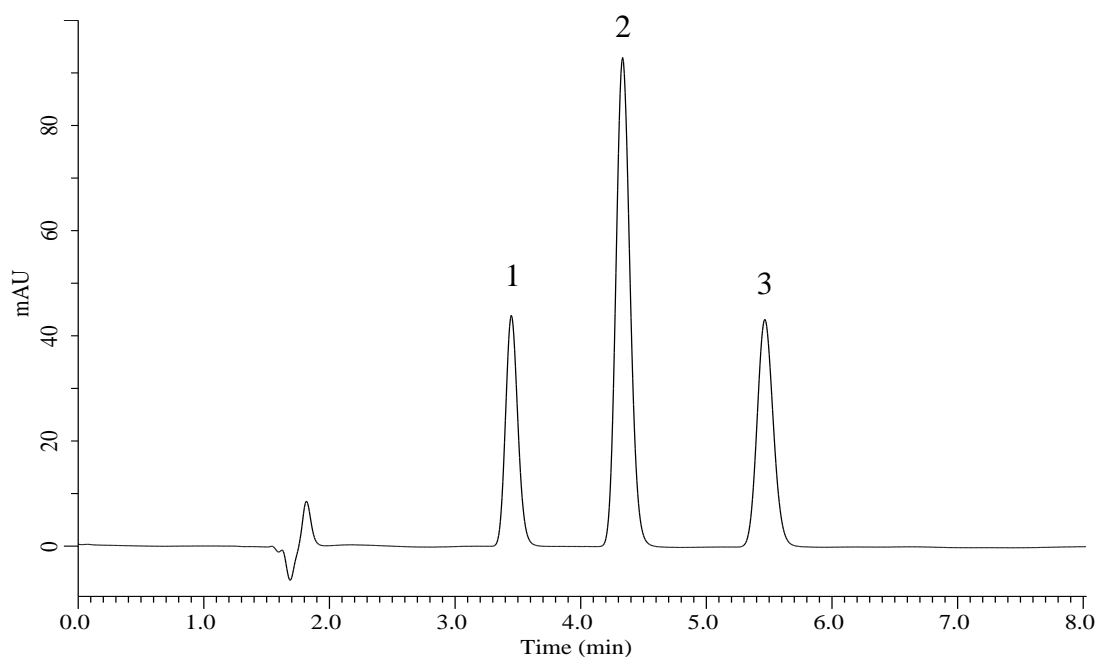


Analysis of Benzoic acid, Sorbic acid and Dehydroacetic acid

(Under the Condition of food additive analysis method in food, Benzoic acid, Sorbic acid and Dehydroacetic acid and those salts)

Data No. LB864-1144



Conditions

System : Primaide HPLC system (HITACHI)
Column : InertSustain C18 (GL Sciences Inc.)
 (5 μ m, 150 x 4.6 mm I.D.)
Column Cat. No. : 5020-07345
Eluent : A) CH₃CN
 B) CH₃OH
 C) Citric acid Buffer*
 A/B/C = 2/1/7, v/v/v
 (Mixed by a gradient mixer)
Flow Rate : 1.0 mL/min
Col. Temp. : 40 °C
Detection : UV 230 nm
Injection Vol. : 20 μ L
Sample : Standard

Analyte:

1. Benzoic acid 5.0 μ g/mL
 2. Sorbic acid 5.0 μ g/mL
 3. Dehydroacetic acid 5.0 μ g/mL

*Dissolve 7.0 g citric acid monohydrate and 6.0 g trisodium citrate dihydrate with water to make 1000 mL. Dilute this to 10 times with water to prepare.