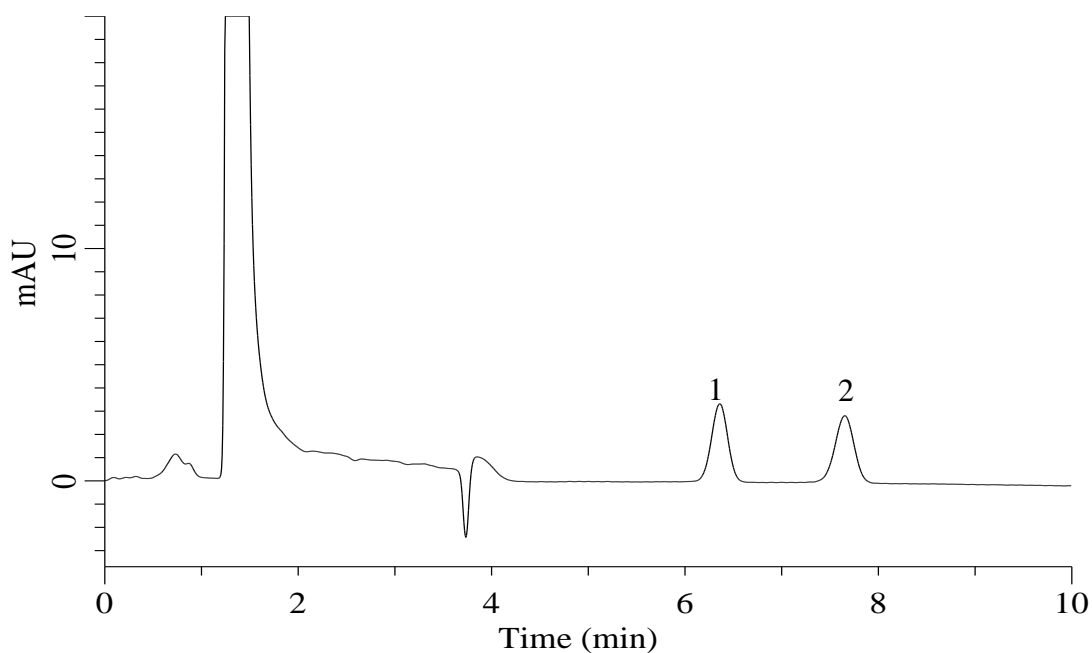


Analysis of L-Ascorbic acid and Erythorbic acid



Conditions

System : Chromaster HPLC system (HITACHI)
Column : InertSustain Amide (GL Sciences Inc.)
 (5 μ m, 250 x 4.6 mm I.D.)
Column Cat. No. : 5020-88632
Eluent : A) CH₃CN
 B) 0.1% H₃PO₄ in H₂O
 A/B = 90/10, v/v
Flow Rate : 1.0 mL/min
Col. Temp. : 40 °C
Detection : UV 270 nm
Injection Vol. : 5 μ L
Sample : Standard

Analyte:

1. Erythorbic acid 20 μ g/mL
 2. L-Ascorbic acid 20 μ g/mL