

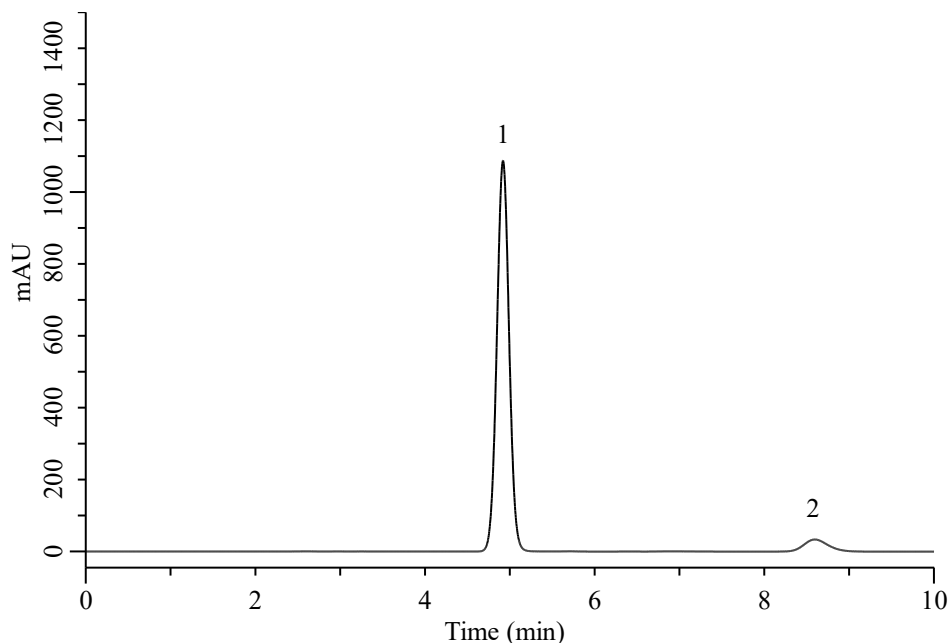
InertSearch™ for LC

Inertsil® Applications

Analysis of Captopril and Captopril Disulfide

(Under the Condition of USP43-NF38, Captopril Tablets)

Data No. LB874-1138



Conditions

System : Primaide HPLC system (HITACHI)
Column : InertSustain AQ-C18 (GL Sciences Inc.)
(5 μ m, 250 x 4.6 mm I.D.)
Column Cat. No. : 5020-89731
Eluent : 0.5mL/L H₃PO₄
in (CH₃OH/H₂O = 55/45, v/v)
Flow Rate : 1.0 mL/min
Col. Temp. : 40 °C
Detection : UV 220 nm
Injection Vol. : 20 μ L
Sample : Standard

Analyte:

1. Captopril	1 mg/mL
2. Captopril Disulfide	0.05 mg/mL
Resolution (1.2)	: 6.3 (\geq 2.0)
RSD of the peak area of 1 (%) (n=6)	: 0.11 (\leq 2.0)
peak area of 2 (%) (n=6)	: 0.30 (\leq 2.0)
Relative retention times Captopril	: 4.92/8.59 (0.57)
Captopril Disulfide	: 8.59/8.59 (1.0)