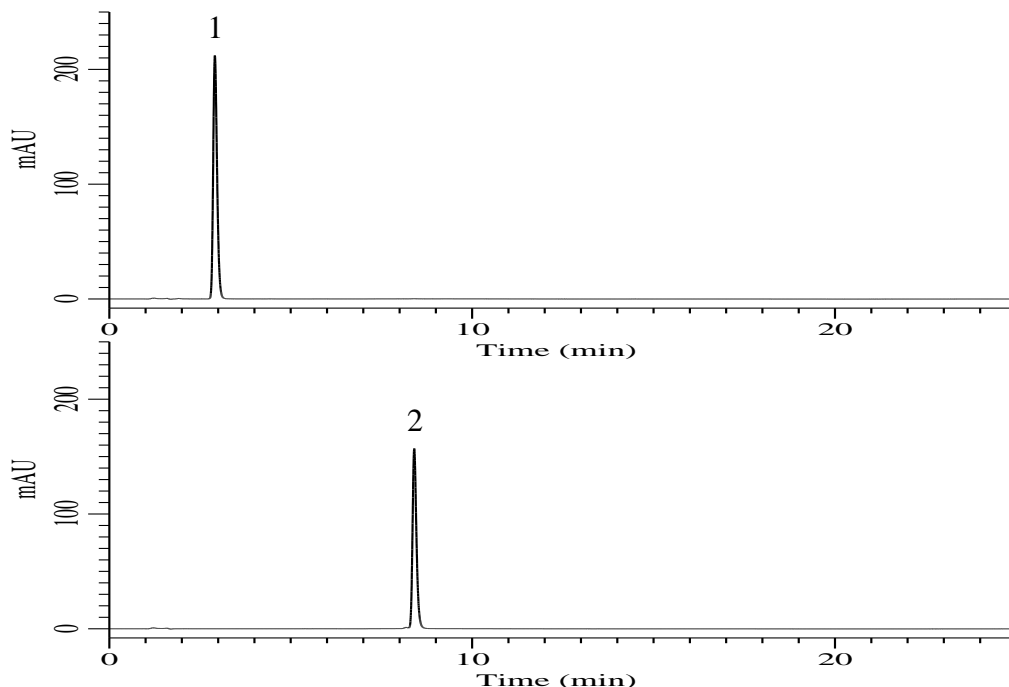


Analysis of Triptorelin Pamoate

(Under the Condition of the draft for USP, Triptorelin Pamoate)



Conditions

System : Chromaster HPLC system (HITACHI)
Column : InertSustain C18 (GL Sciences Inc.)
 (5 μ m, 150 x 3.9 mm I.D.)
Column Cat. No. : 5020-87030
Eluent : A) CH₃CN
 B) Buffer*

Time (min)	A (vol %)	B (vol %)
0	23	77
4	23	77
5	30	70
15	30	70
20	23	77
25	23	77

Analyte:

1. Pamoic Acid 0.02 mg/mL
 2. Triptorelin Acetate 0.04 mg/mL

RSD of the
 peak area of 1 (%) (n=5) : 0.09 (\leq 1.0)
 peak area of 2 (%) (n=5) : 0.17 (\leq 2.0)

Flow Rate : 1 mL/min
Col. Temp. : 40 °C
Detection : UV 220 nm
Injection Vol. : 10 μ L
Sample : Standard

* 34 mM monobasic potassium phosphate and 34 mM dibasic sodium phosphate in water.
 Adjust if necessary with sodium hydroxide to a pH of 6.9.