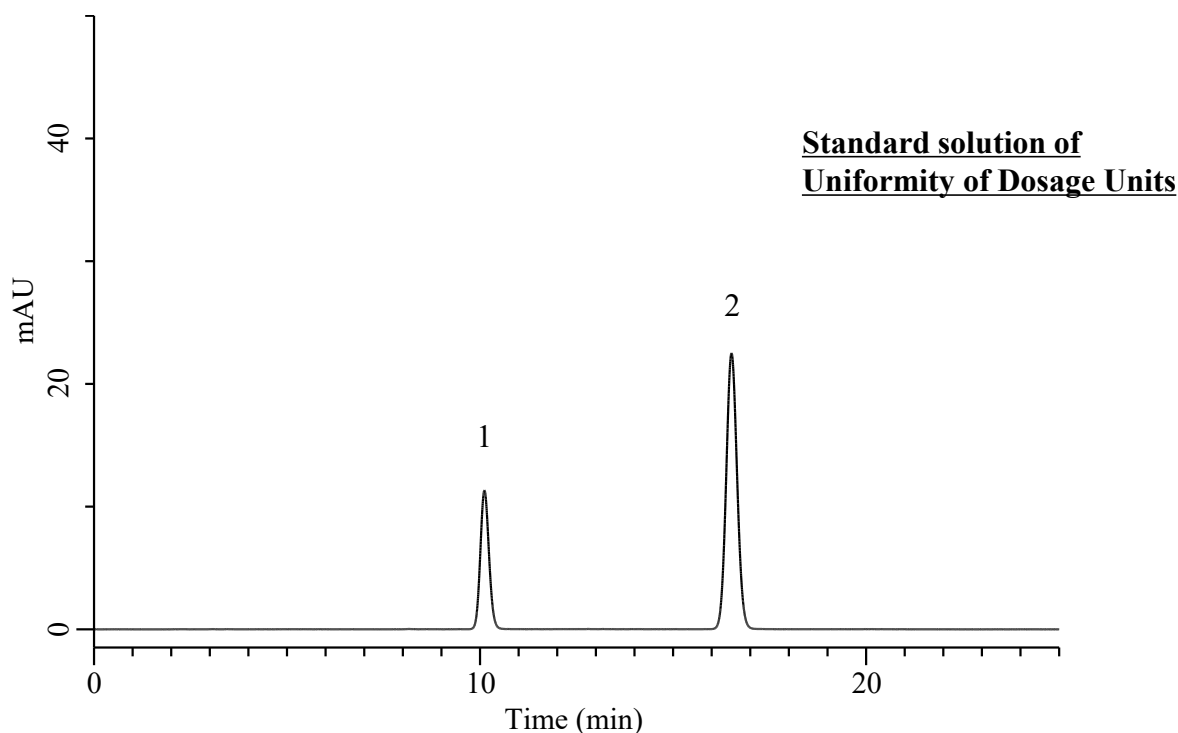


Analysis of Aripiprazole

(Under the Condition of the draft for the Japanese Pharmacopoeia, Aripiprazole Tablets)



Conditions

System	: Chromaster HPLC system (HITACHI)	Analyte:	
Column	: InertSustain C18 (GL Sciences Inc.) (5 μ m, 250 x 4.6 mm I.D.)	1. Aripiprazole	10 μ g/mL
Column Cat. No.	: 5020-07346	2. Propyl Parahydroxybenzoate	8.3 μ g/mL
Eluent	: CH ₃ CN/CH ₃ OH/CH ₃ COOH(100)/Solution* = 330/110/10/560, v/v/v/v	Resolution	: 13.7 (\geq 8)
Flow Rate	: 1.0 mL/min	RSD of the peak ratio	
Col. Temp.	: 25 °C	of 1 to 2 (%) (n=6)	: 0.09 (\leq 1.0)
Detection	: UV 254 nm		
Injection Vol.	: 10 μ L		
Sample	: Standard		

* Dissolve 2.84 g of anhydrous sodium sulfate in water to make 1000 mL.