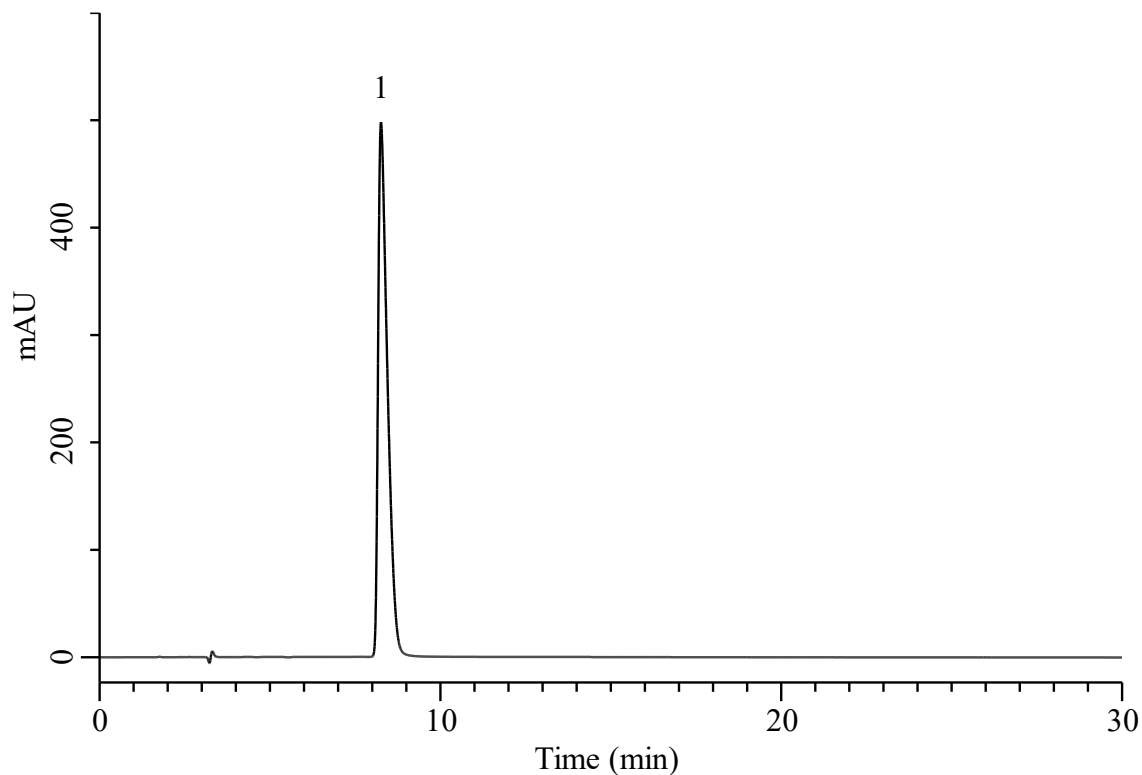


Analysis of Metformin hydrochloride



Conditions

System : Chromaster HPLC system (HITACHI)
Column : InertSustain C18 (GL Sciences Inc.)
 (10 μ m, 300 x 3.9 mm I.D.)
Column Cat. No. : 5020-90556
Eluent : A) CH₃CN
 B) Buffer*
 A/B=10/90, v/v
Flow Rate : 1.0 mL/min
Col. Temp. : 30 °C
Detection : UV 218 nm (5430 DAD)
Injection Vol. : 10 μ L
Sample : Standard

Analyte:

1. Metformin hydrochloride 0.30 mg/mL

 Tailing factor : 1.91 (\cong 2.5)

 RSD of the peak area (%) (n=6) : 0.07 (\cong 1.0)

*: Dissolve 0.5 g of sodium 1-heptanesulfonate and 0.5 g of sodium chloride in 1000 mL of water. Adjust with 0.4% (v/v) phosphoric acid to a pH of 3.85.