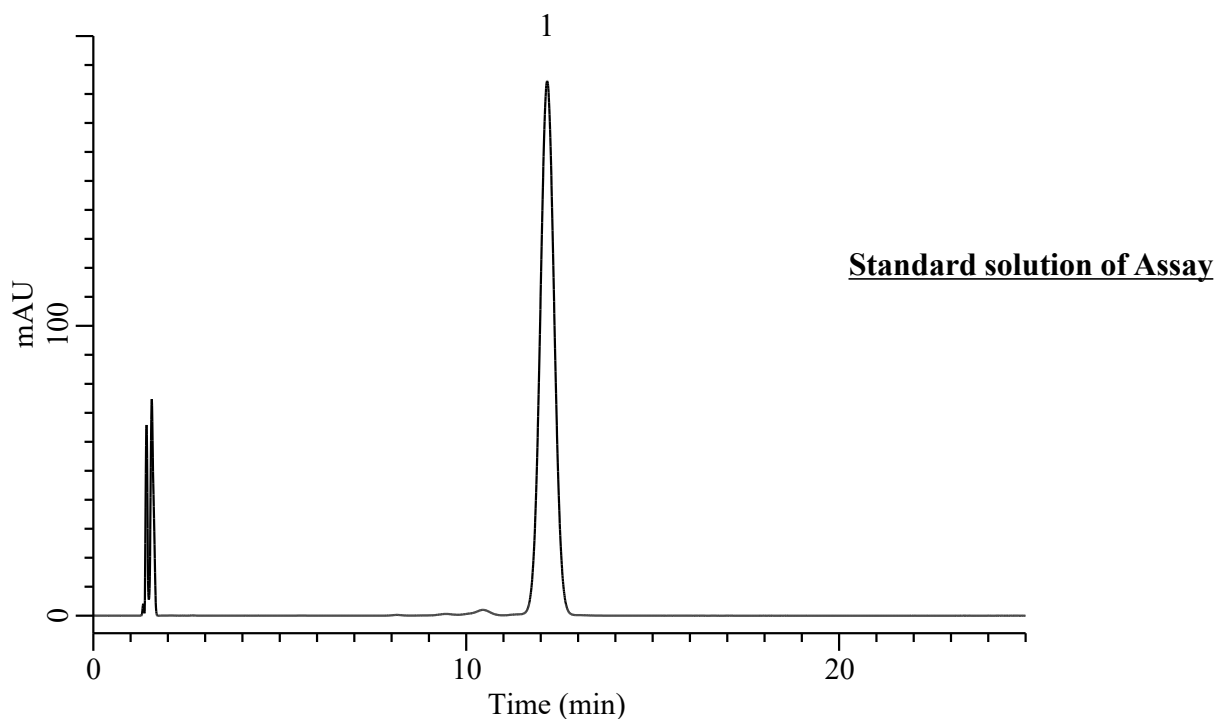


Analysis of *d*- α -Tocopherol acetate

(Under the Condition of the Japanese Standards of Quasi-drug Ingredients,
d- α -Tocopherol acetate)



Conditions

System : Primaide HPLC system (HITACHI)
Column : InertSustain C18 (GL Sciences Inc.)
 (5 μ m, 150 x 4.0 mm I.D.)
Column Cat. No. : 5020-07335
Eluent : CH₃OH/H₂O = 49/1, v/v
Flow Rate : 0.9 mL/min
Col. Temp. : 25 °C
Detection : UV 284 nm
Injection Vol. : 20 μ L
Sample : Standard

Analyte:

1. *d*- α -Tocopherol acetate 1 mg/mL

RSD of the peak height (%) (n=5) : 0.18 (\leq 0.8)