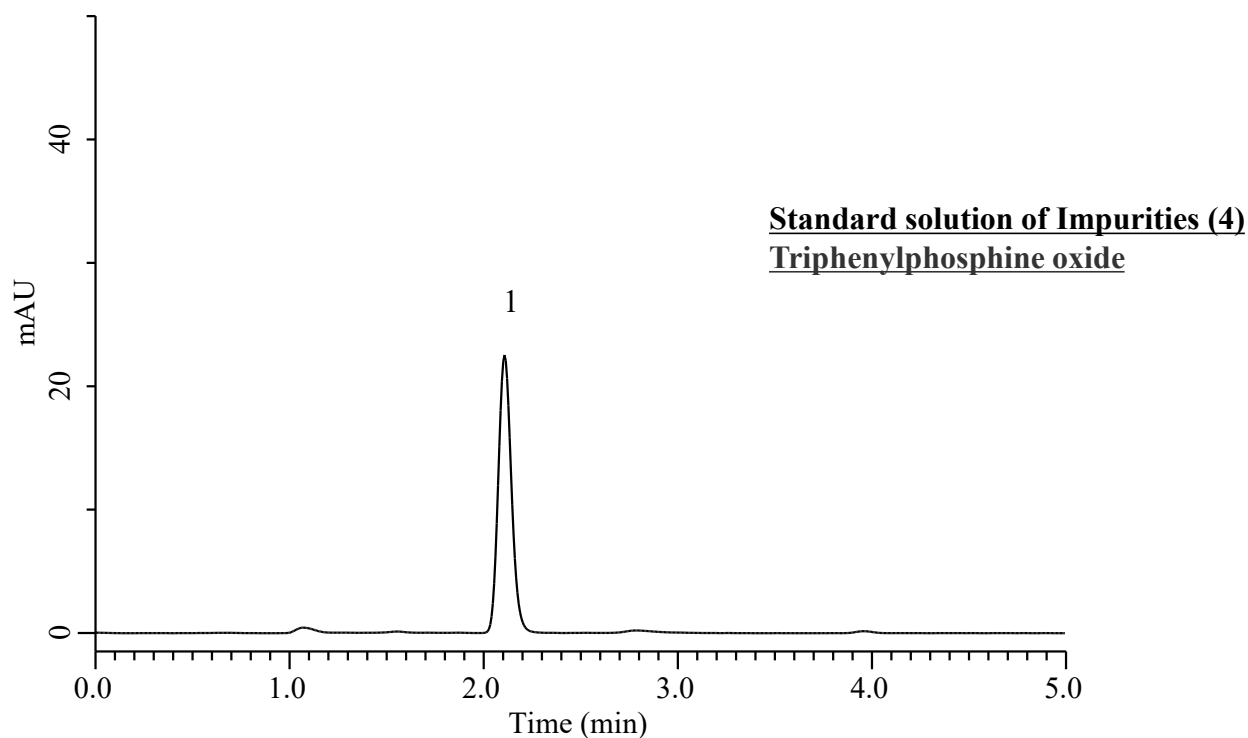


## Analysis of Triphenylphosphine oxide

(Under the Condition of the Japanese Pharmaceutical Excipients, Sucralose)



### Conditions

**System** : Primaide HPLC system (HITACHI)  
**Column** : InertSustain C18 (GL Sciences Inc.)  
(5  $\mu$  m, 150 x 4.6 mm I.D.)  
**Column Cat. No.** : 5020-07345  
**Eluent** : CH<sub>3</sub>CN/H<sub>2</sub>O = 67/33, v/v  
**Flow Rate** : 1.2 mL/min  
**Col. Temp.** : 40 °C  
**Detection** : UV 220 nm (1430 DAD)  
**Injection Vol.** : 25  $\mu$  L  
**Sample** : Standard

### Analyte:

1. Triphenylphosphine oxide 1  $\mu$  g/mL