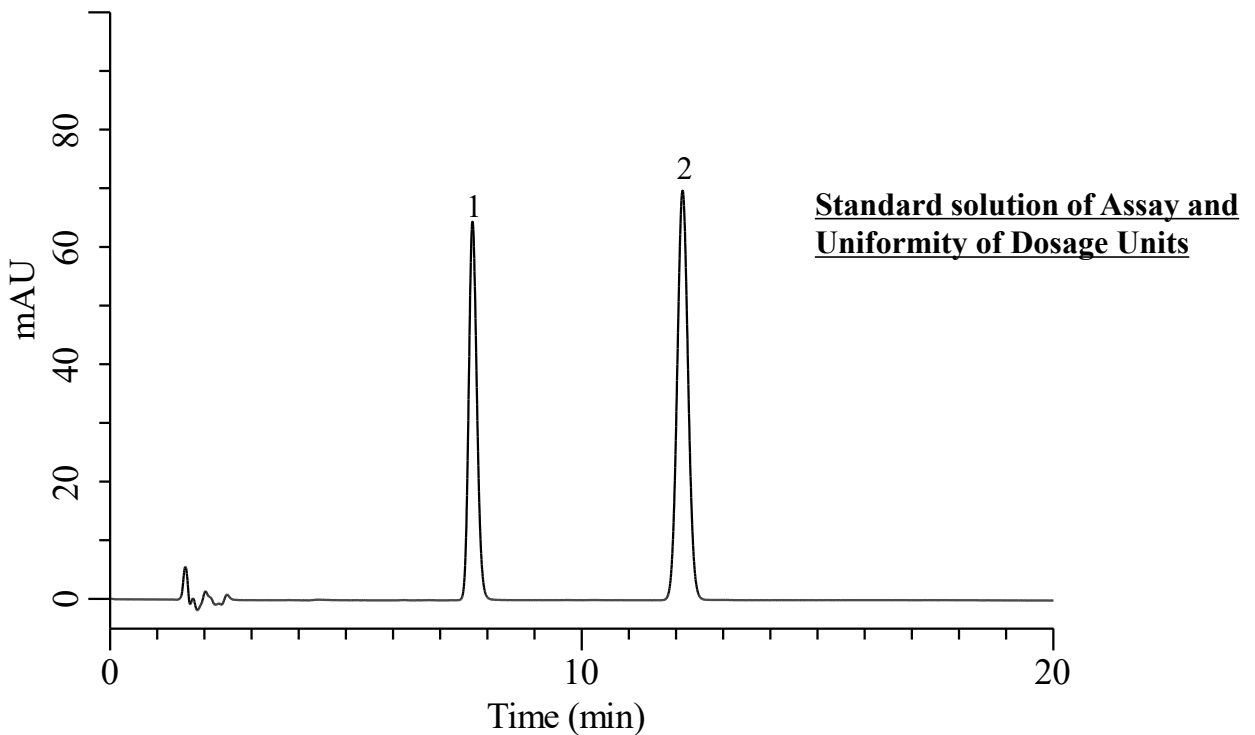


Analysis of Blonanserin

(Under the Condition of the draft for the Japanese Pharmacopoeia, Blonanserin Tablets and Blonanserin Powder)



Conditions

System : Chromaster HPLC system (HITACHI)
Column : InertSustain C18 (GL Sciences Inc.)
 (5 μ m, 150 x 4.6 mm I.D.)
Column Cat. No. : 5020-07345
Eluent : Solution*
Flow Rate : 0.8 mL/min
Col. Temp. : 40 °C
Detection : UV 230 nm
Injection Vol. : 10 μ L
Sample : Standard

Analyte:

1. Blonanserin 24 μ g/mL
 2. Isoamyl Benzoate 25 μ g/mL

Resolution (1,2) : 12.0 (\geq 5.0)

RSD of the peak ratio of 1 to 2
 (%) (n=6) : 0.32 (\leq 1.0)

* Dissolve 1.66 g potassium dihydrogen phosphate in 900 mL of water, add 1% phosphoric acid, and adjust pH to 2.6. Mix this solution with acetonitrile at a ratio of 7:13 and dissolve sodium dodecyl sulfate at a rate of 1.16 g/L.