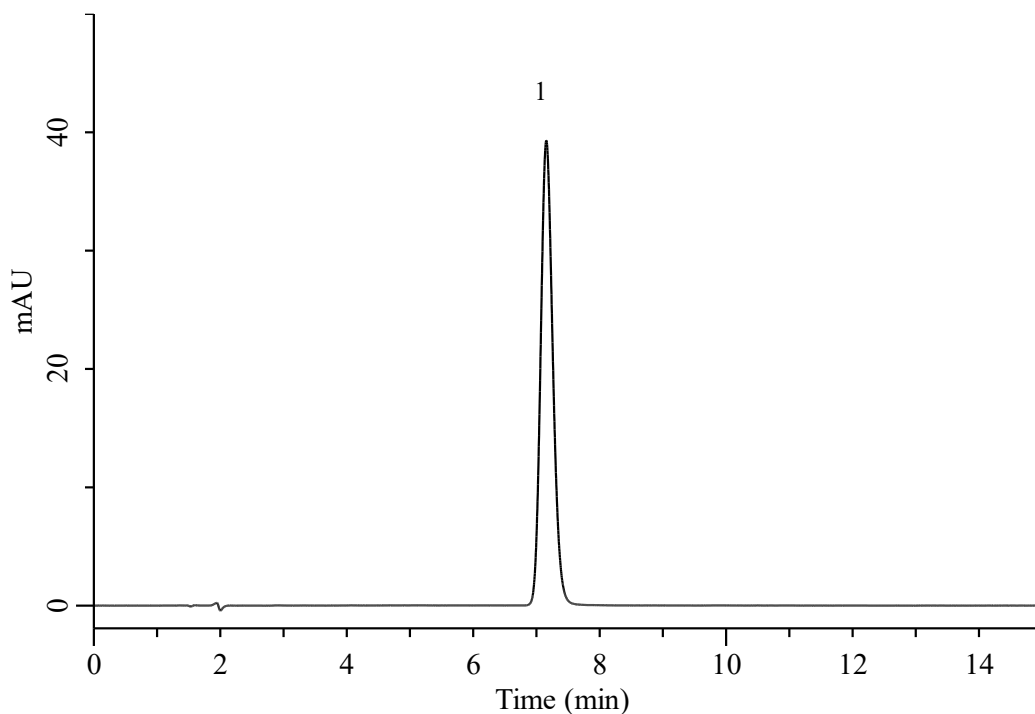


## Analysis of Galantamine

(Under the Condition of the USP43-NF38, Galantamine Extended-Release Capsules, ASSAY)



### Conditions

**System** : Chromaster HPLC system (HITACHI)  
**Column** : InertSustain C18 (GL Sciences Inc.)  
 (5  $\mu$  m, 150 x 4.6 mm I.D.)  
**Column Cat. No.** : 5020-07345  
**Eluent** : A) CH<sub>3</sub>CN  
 B) 4.0 g/L KH<sub>2</sub>PO<sub>4</sub> in H<sub>2</sub>O (pH 6.5, 5 M NaOH)  
 A/B = 10/90, v/v (Mixed by a gradient mixer)  
**Flow Rate** : 1.2 mL/min  
**Col. Temp.** : 40 °C  
**Detection** : UV 288 nm  
**Injection Vol.** : 20  $\mu$  L  
**Sample** : Standard

### Analyte:

1. Galantamine 48 mg/L  
 Tailing factor :1.16( $\leq$ 1.7)  
 RSD of the peak area (%)(n=6) :0.07( $\leq$ 1.0)