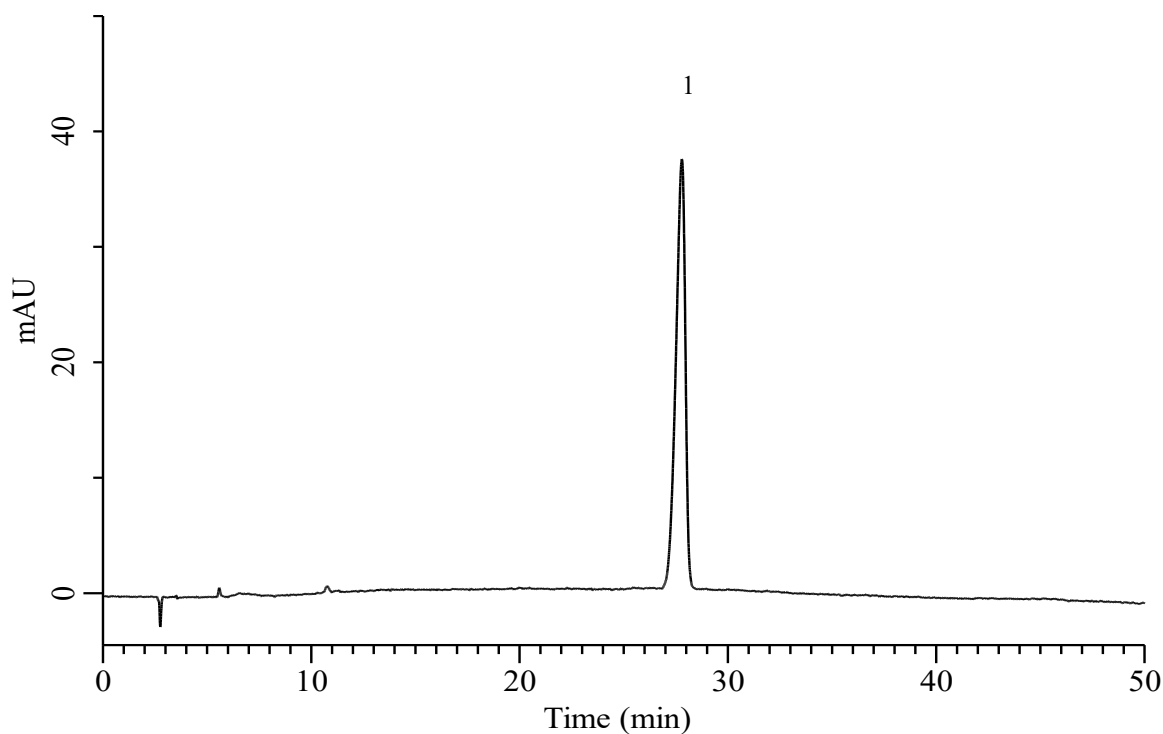


Analysis of Amikacin



Conditions

System : Chromaster HPLC system (HITACHI)
Column : InertSustainSwift C18 (GL Sciences Inc.)
 (5 μ m, 250 x 4.6 mm I.D.)
Column Cat. No. : 5020-88027
Eluent : Solution*
Flow Rate : 1.0 mL/min
Col. Temp. : 40 °C
Detection : UV 200 nm
Injection Vol. : 1 μ L
Sample : Standard

Analyte:

1. Amikacin 5 mg/mL
 RSD of the peak area (n=6) : 0.90(\leq 1.5)

*A mixture prepared with carbon dioxide-free water, containing 1.8 g/L of sodium octanesulfonate, 20 g/L of anhydrous sodium sulfate, 5.8 % v/v of acetonitrile, and 5 % v/v of 0.2 M potassium dihydrogen phosphate previously adjusted to pH 3.0 with dilute phosphoric acid.