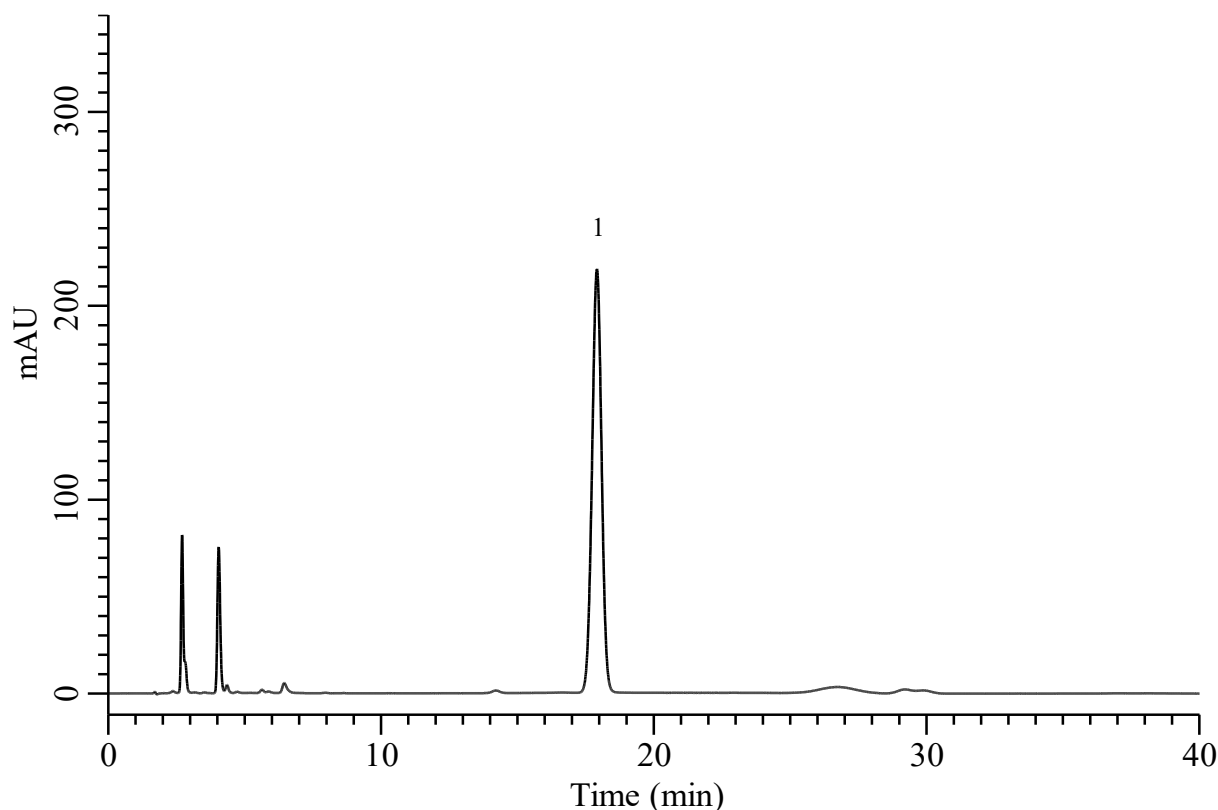


## Analysis of Omeprazole

(Under the Condition of the USP43-NF38, Omeprazole, ASSAY)



### Conditions

**System** : Primaide HPLC system (HITACHI)  
**Column** : Inertsil C8-3 (GL Sciences Inc.)  
 (5  $\mu$  m, 150 x 4.6 mm I.D.)  
**Column Cat. No.** : 5020-01900  
**Eluent** : A) CH<sub>3</sub>CN  
 B) Buffer\*  
 A/B = 25/75, v/v (Mixed by a gradient mixer)  
**Flow Rate** : 0.8 mL/min  
**Col. Temp.** : 40 °C  
**Detection** : UV 280 nm  
**Injection Vol.** : 20  $\mu$  L  
**Sample** : Standard

### Analyte:

1. Omeprazole 200 mg/L  
 Tailing factor :0.97( $\leq$ 1.5)  
 RSD of the peak area (%)(n=6) :0.42( $\leq$ 1.0)

\*Dissolve 0.725 g of monobasic sodium phosphate and 4.472 g of anhydrous dibasic sodium phosphate in 1000 mL of water. Dilute 250 mL of this solution with water to 1000mL. If necessary, adjust with phosphoric acid to a pH of 7.6.