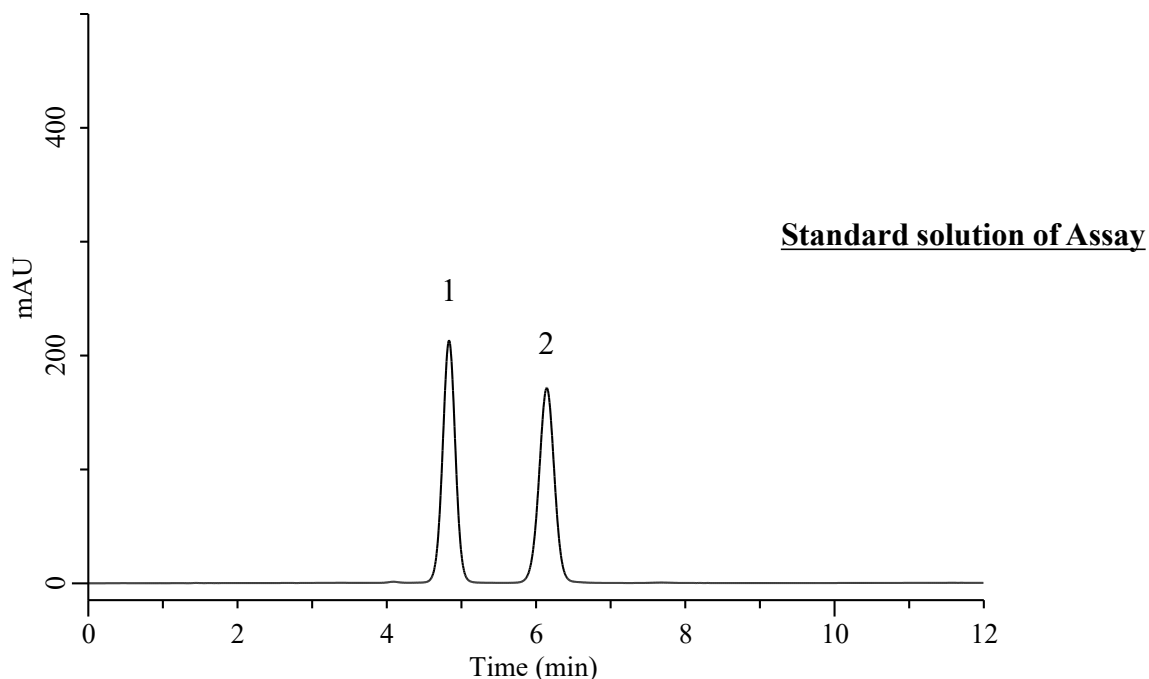


Analysis of Methyltestosterone and Progesterone

(Under the Condition of the draft for USP, Progesterone Compounded Vaginal Inserts)



Conditions

System	: Chromaster HPLC system (HITACHI)	Analyte:	
Column	: Inertsil WP300 C18 (GL Sciences Inc.) (10 μ m, 300 x 3.9 mm I.D.)	1. Methyltestosterone	80 μ g/mL
Column Cat. No.	: 5020-90660	2. Progesterone	80 μ g/mL
Eluent	: A) Ethanol/2-Propanol/Methanol = 90/5/5, v/v/v B) H ₂ O	Relative retention time	
Flow Rate	: 1.0 mL/min	Methyltestosterone	: 0.8 (4.83)
Col. Temp.	: 40 °C	Progesterone	: 1.0 (6.14)
Detection	: UV 245 nm (5430 DAD)	Resolution (1, 2)	: 3.75 (\geq 2.0)
Injection Vol.	: 10 μ L	Tailing factor peak of 2	: 0.99 (\leq 2.0)
Sample	: Standard	RSD of the peak area of 2 (%) (n=6)	: 0.07 (\leq 2.0)