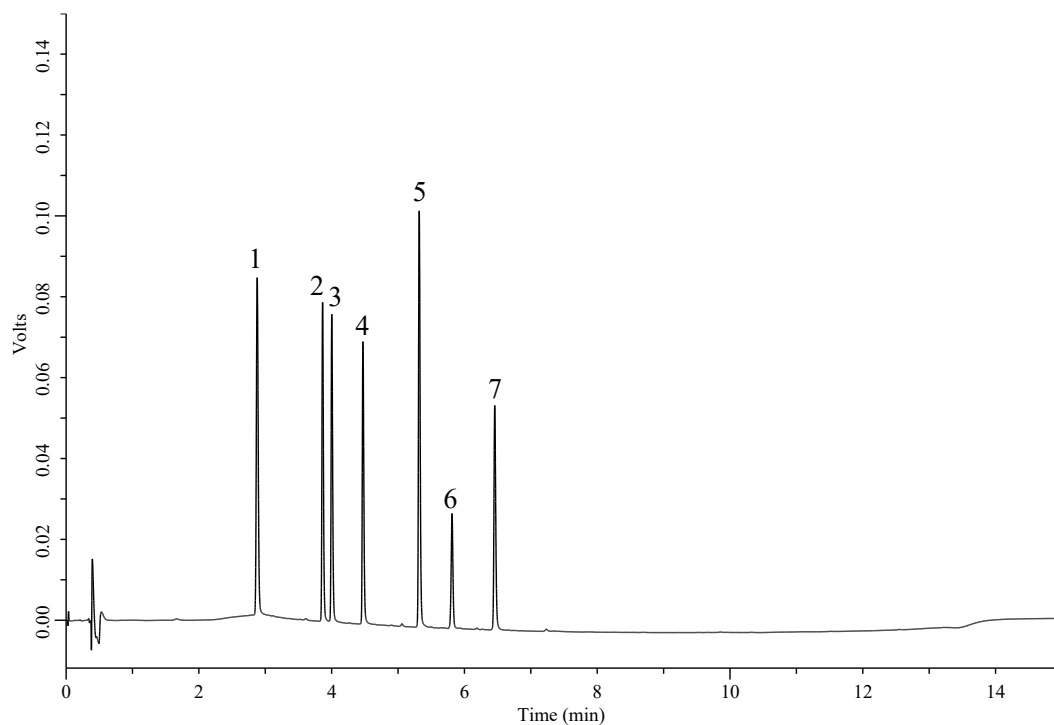


Analysis of Food Dyes



Conditions

System : Nexera-i HPLC system (Shimadzu)
Column : InertSustainSwift C18 (GL Sciences Inc.)
 (1.9 μ m, 50 x 2.1 mm I.D.)
Column Cat. No. : 5020-88228
Eluent : A) Solution*/CH₃CN=99/1, v/v
 B) CH₃CN/CH₃OH=75/25, v/v

Time (min)	A %	B %
0.0	100	0
0.5	100	0
12.0	0	100
15.0	0	100
15.1	100	0
20.0	100	0

Flow Rate : 0.4 mL/min
Col. Temp. : 40 °C
Detection : UV 280 nm (PDA 270-790 nm)
Injection Vol. : 1 μ L
Sample : Standard

Analyte:

1. Tartrazine (FD&C Yellow No.5)
2. Acid Red 18 (Ponceau 4R)
3. Sunset yellow FCF (FD&C Yellow No.6)
4. Allura red AC (FD&C Red No.40)
5. Azo rubine (former External Red 10)
6. Brilliant blue FCF (FD&C Blue No.1)
7. Erythrosine (FD&C Red No.3)

50 mg/L each

* 100 mM ammonium acetate (pH 6.5), acidified with 5% HCl (aq.)