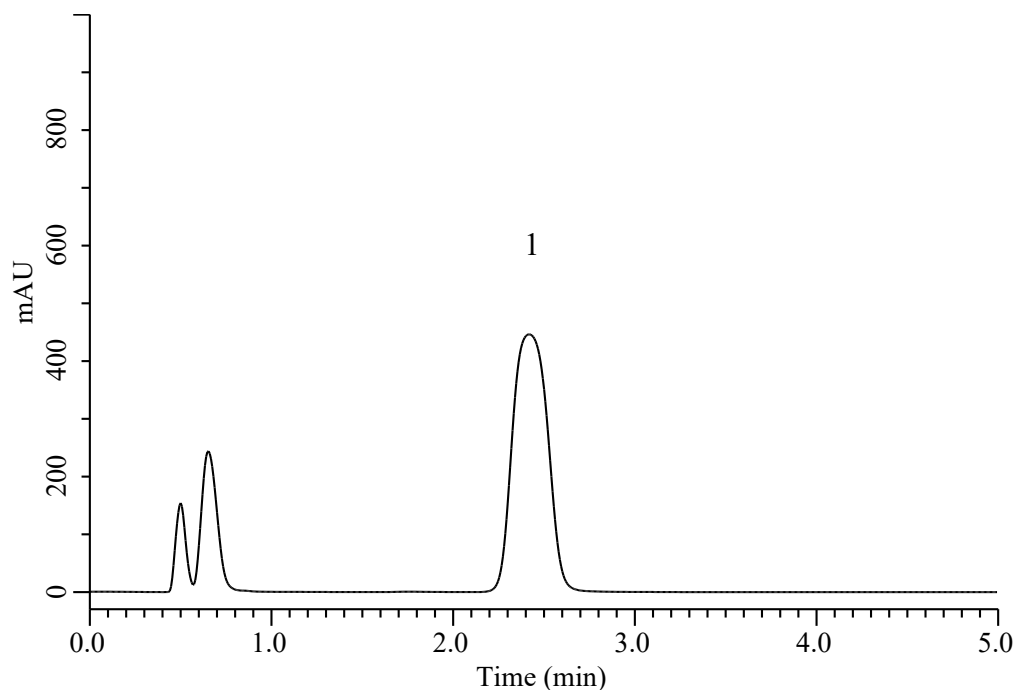


Analysis of Dapagliflozin propandiol



Conditions

System : Chromaster PLUS HPLC system (HITACHI)
Column : InertSustain AQ-C18 (GL Sciences Inc.)
 (3 μ m, 100 x 3.0 mm I.D.)
Column Cat. No. : 5020-89929
Eluent : CH₃CN/H₂O/TFA = 800/1200/1, v/v/v
Flow Rate : 0.8 mL/min
Col. Temp. : 35 °C
Detection : UV 220 nm (5430 DAD)
Injection Vol. : 40 μ L
Sample : Standard

Analyte:

1. Dapagliflozin propandiol 50 μ g/mL

Tailing factor : 1.10 (0.8 - 1.8)

RSD of the peak area (%) (n=6) : 1.0 (\leq 2)