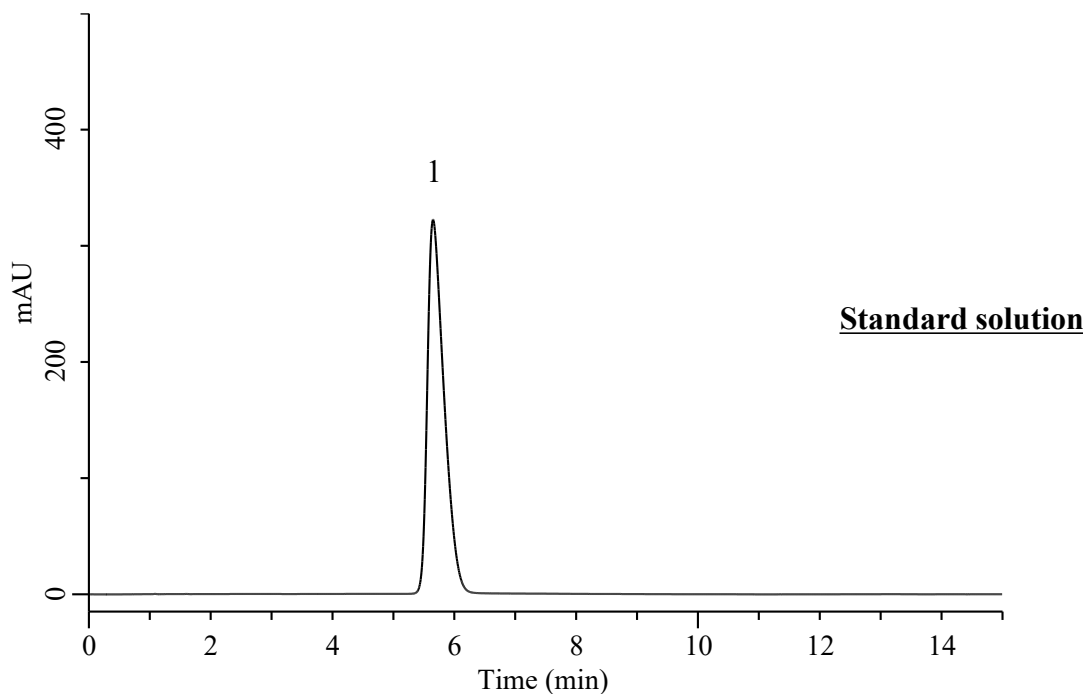


Analysis of Xylazine

(Under the Condition of the draft for USP, Xylazine Hydrochloride, ASSAY)



Conditions

System : Chromster PLUS HPLC system (HITACHI)
Column : InertSustain C18 (GL Sciences Inc.)
 (10 μ m, 300 x 3.9 mm I.D.)
Column Cat. No. : 5020-90556
Eluent : A) CH₃OH
 B) Solution*
 A/B = 45/55, v/v
Flow Rate : 2.5 mL/min
Col. Temp. : 40 °C
Detection : UV 254 nm (5430 DAD)
Injection Vol. : 20 μ L
Sample : Standard

Analyte:

1. Xylazine 1 mg/mL
 Tailing factor : 1.61 (0.8 - 1.8)
 RSD of the peak area (%) (n=6) : 0.07 (\leq 1.0)

* : 2.0 g/L of sodium 1-heptanesulfonate and 20 mL/L of glacial acetic acid in water: