

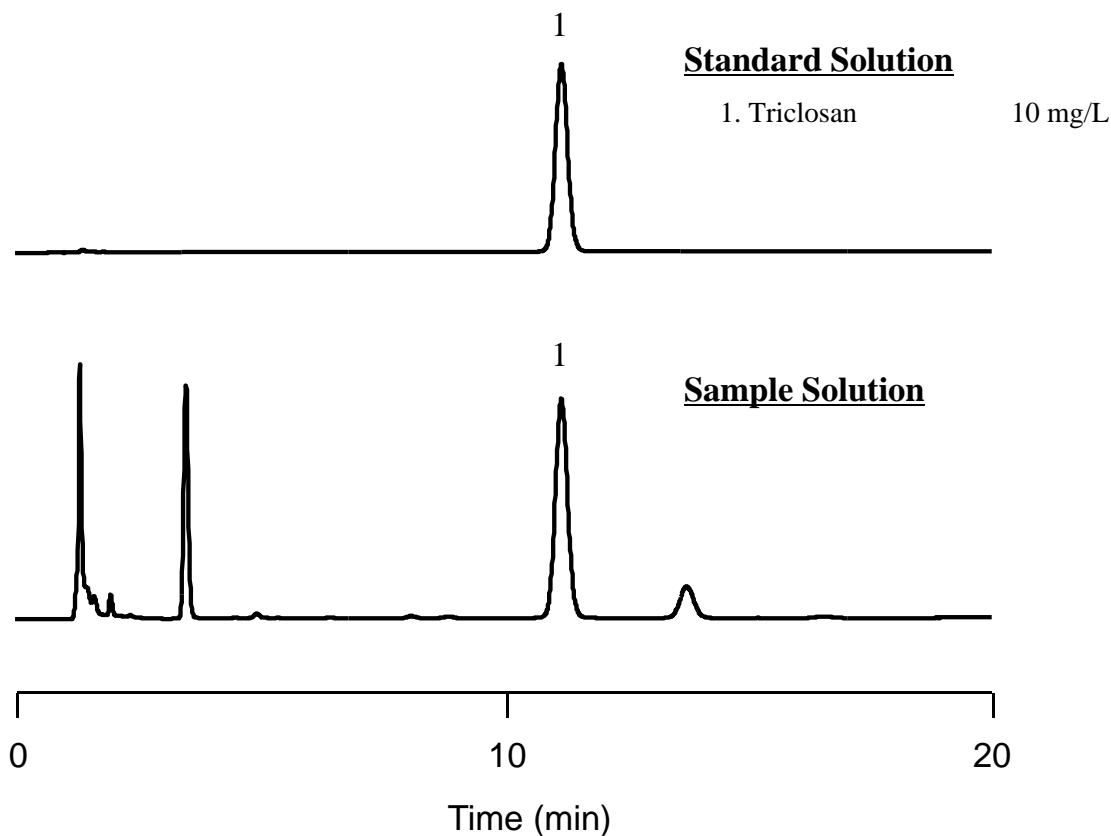
InertSearch™ for LC

Inertsil® Applications

Analysis of Triclosan

Data No. LL023-0000

*The chromatogram was provided by Prof. Shuji Kodama,
Department of Chemistry, School of Science, Tokai University,
4-1-1 Kitakaname, Hiratsuka, Kanagawa 259-1292, Japan*

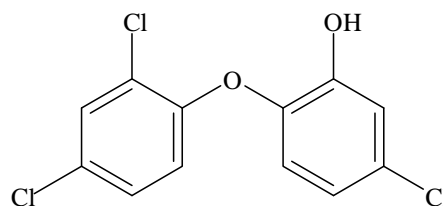


Conditions

Column : InertSustain C18
(5 μ m, 150 x 4.6 mm I.D.)
Column Cat. No. : 5020-07345
Eluent : A) CH₃OH
B) H₂O
A/B = 75/25, v/v
Flow rate : 1.0 mL/min
Col. Temp. : 40 °C
Detection : UV 280 nm
Injection Vol. : 10 μ L
Sample : hand soap

Analyte:

1. Triclosan



Triclosan

Structures are created using Chemistry 4-D Draw which is provided by ChemInnovation Software, Inc.