

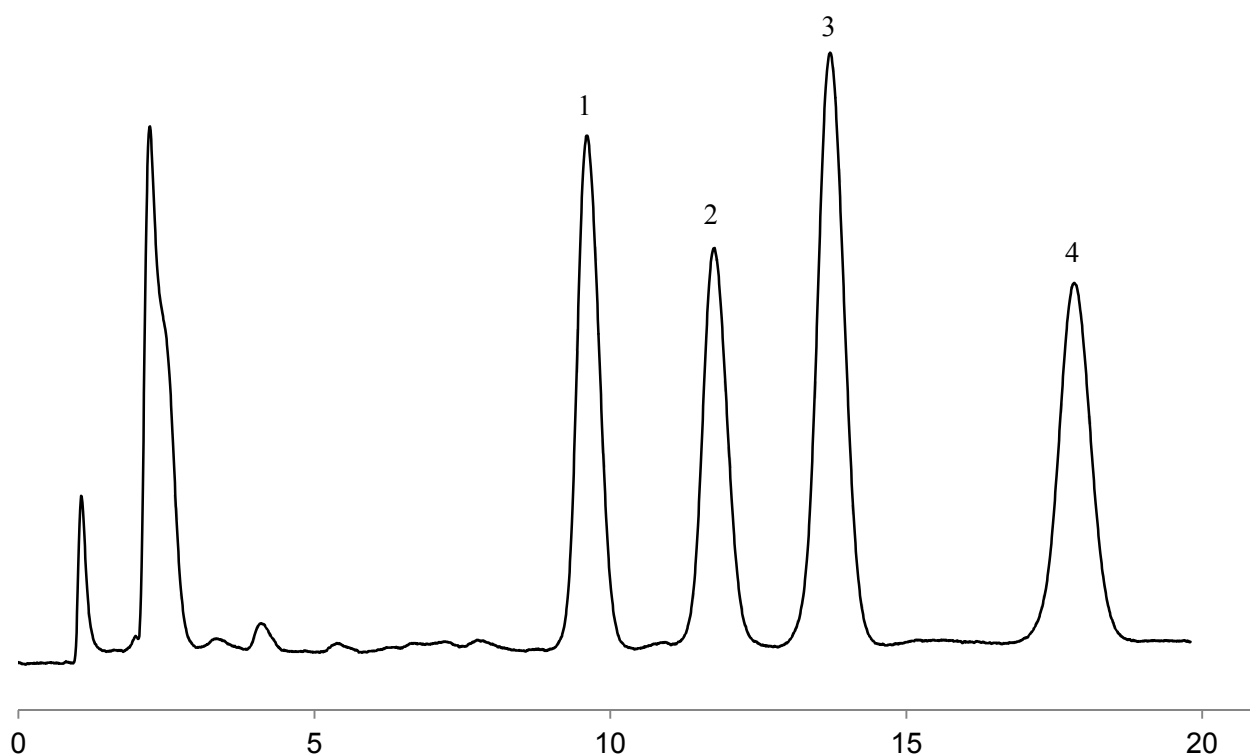
# InertSearch™ for LC

Inertsil® Applications

## Analysis of branched-chain keto acids derivatized with *o*-phenylenediamine (OPD)

Data No. LL028-0000

*The chromatogram was provided by Dr. Makoto Tsunoda,  
Graduate School of Pharmaceutical Sciences, University of Tokyo,  
7-3-1 Hongo, Bunkyo-ku, Tokyo 113-0033, Japan*



### Conditions

**Column** : Inertsil ODS-4V  
(5  $\mu$  m, 250 x 3.0 mm I.D.)  
**Column Cat. No.** : 5020-10922  
**Eluent** : A) CH<sub>3</sub>OH  
B) H<sub>2</sub>O  
A/B = 50/50, v/v  
**Flow rate** : 0.6 mL/min  
**Col. Temp.** : 40 °C  
**Detection** : FL Ex 360 nm Em 415 nm  
**Injection Vol.** : 10  $\mu$  L  
**Sample** : Standard solution derivatized with OPD

### Analyte:

1.  $\alpha$ -ketovaleric acid (KV)
2.  $\alpha$ -keto-isovaleric acid (KIV)
3.  $\alpha$ -keto-isocaproic acid (KIC)
4.  $\alpha$ -keto- $\beta$ -methylvaleric acid (KMV)