

# InertSearch™ for LC

Inertsil™ Applications

## Simultaneous analysis of lipid mediators using LC/MS/MS

Data No. LL029-0000

*The chromatograms were provided by Yoshihiro Izumi and Takeshi Bamba,  
Division of Metabolomics, Medical Institute of Bioregulation, Kyushu University,  
3-1-1 Maidashi, Higashi-ku, Fukuoka 812-8582, Japan*

### Conditions

**Column** : InertSustain C18  
(3  $\mu$  m, 100 x 2.1 mm I.D.)  
**Column Cat. No.** : 5020-07414  
**Eluent** : A) 0.05% CH<sub>3</sub>COOH in H<sub>2</sub>O  
B) CH<sub>3</sub>CN  
**Flow rate** : 0.3 mL/min  
**Col. Temp.** : 40 °C  
**Detection** : LC/MS/MS (ESI, Negative, MRM)  
**Injection Vol.** : 3  $\mu$  L  
**Sample** : Standard solution

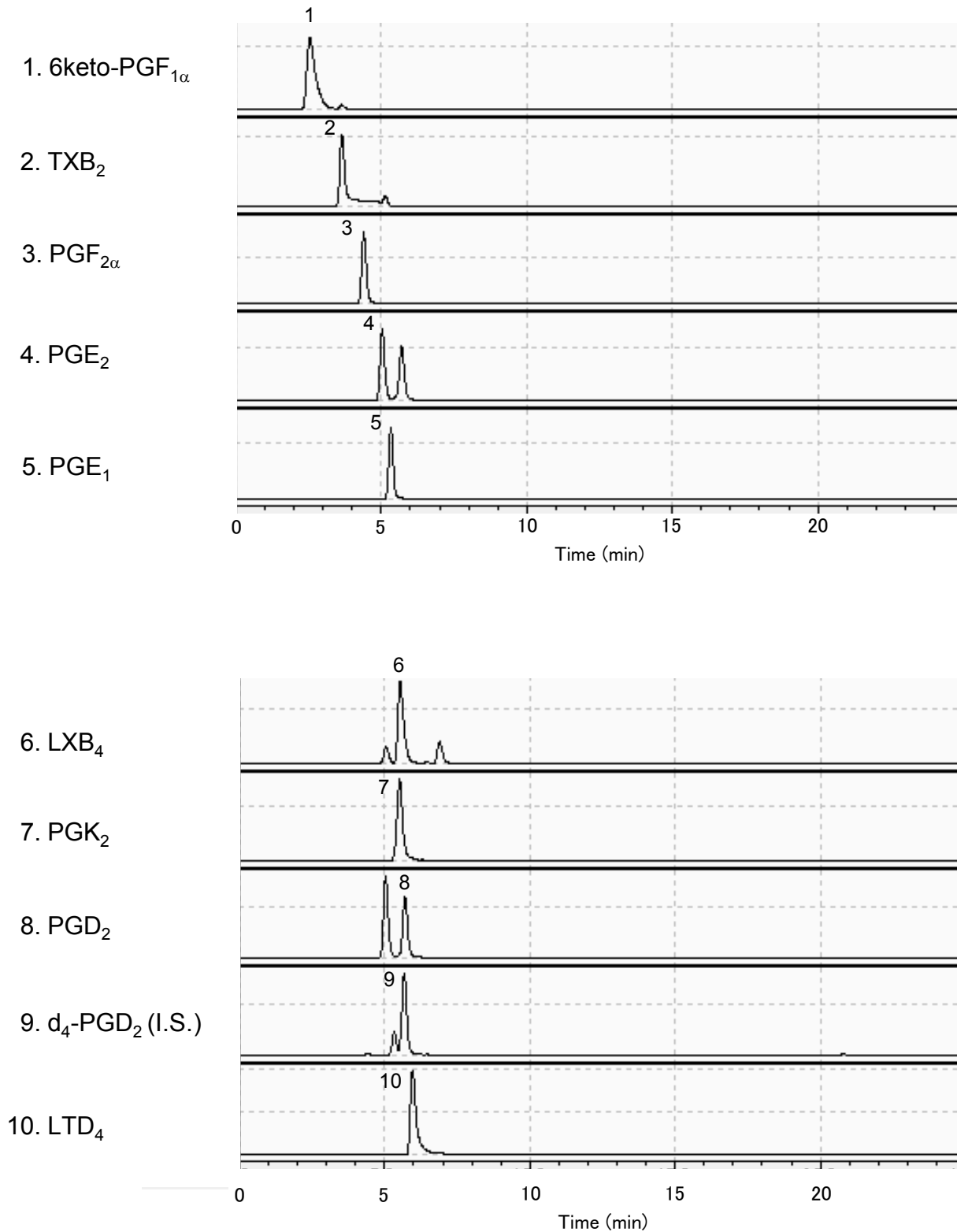
Time(min)	A(vol%)	B(vol%)
0	65	35
0.01	65	35
15	50	50
23	12.5	87.5
23.1	2	98
26	2	98
26.1	65	35
30	65	35

Analyte	Precursor ion (m/z)	Product ion (m/z)
1. 6-keto Prostaglandin F <sub>1<math>\alpha</math></sub> (6keto-PGF <sub>1<math>\alpha</math></sub> )	369.25	163.15
2. Thromboxane B <sub>2</sub> (TXB <sub>2</sub> )	369.25	169.15
3. Prostaglandin F <sub>2<math>\alpha</math></sub> (PGF <sub>2<math>\alpha</math></sub> )	353.30	309.40
4. Prostaglandin E <sub>2</sub> (PGE <sub>2</sub> )	351.25	315.25
5. Prostaglandin E <sub>1</sub> (PGE <sub>1</sub> )	353.30	317.40
6. Lipoxin B <sub>4</sub> (LXB <sub>4</sub> )	351.30	59.30
7. Prostaglandin K <sub>2</sub> (PGK <sub>2</sub> )	349.25	249.05
8. Prostaglandin D <sub>2</sub> (PGD <sub>2</sub> )	351.25	271.30
9. d <sub>4</sub> -Prostaglandin D <sub>2</sub> (d <sub>4</sub> -PGD <sub>2</sub> , internal standard)	355.30	275.40
10. Leukotriene D <sub>4</sub> (LTD <sub>4</sub> )	495.25	177.05
11. Prostaglandin G <sub>2</sub> (PGG <sub>2</sub> )	367.15	235.10
12. Lipoxin A <sub>4</sub> (LXA <sub>4</sub> )	351.25	115.25
13. Resolvin D <sub>1</sub> (RvD <sub>1</sub> )	375.20	141.05
14. Leukotriene E <sub>4</sub> (LTE <sub>4</sub> )	438.25	333.05
15. Prostaglandin A <sub>2</sub> (PGA <sub>2</sub> )	333.25	271.20
16. Prostaglandin B <sub>2</sub> (PGB <sub>2</sub> )	333.25	175.20
17. Protectin D <sub>1</sub> (PD <sub>1</sub> )	359.25	153.15
18. Leukotriene B <sub>4</sub> (LTB <sub>4</sub> )	335.25	195.05
19. 15-Hydroxyeicosatetraenoic acid (15-HETE)	319.25	219.15
20. 17-Hydroxydocosahexaenoic acid (17-HDoHE)	343.30	281.40
21. 15-Hydroperoxyeicosatetraenoic acid (15-HpETE)	335.25	113.15
22. 12-Hydroxyeicosatetraenoic acid (12-HETE)	319.25	179.15
23. 12-Hydroperoxyeicosatetraenoic acid (12-HpETE)	335.25	273.35
24. 5-Hydroxyeicosatetraenoic acid (5-HETE)	319.25	301.25
25. 5-Hydroperoxyeicosatetraenoic acid (5-HpETE)	335.25	317.25
26. Eicosapentaenoic acid (EPA)	301.20	301.20
27. Docosahexaenoic acid (DHA)	327.30	327.30
28. Arachidonic acid (AA)	303.30	303.30

# InertSearch™ for LC

Inertsil™ Applications

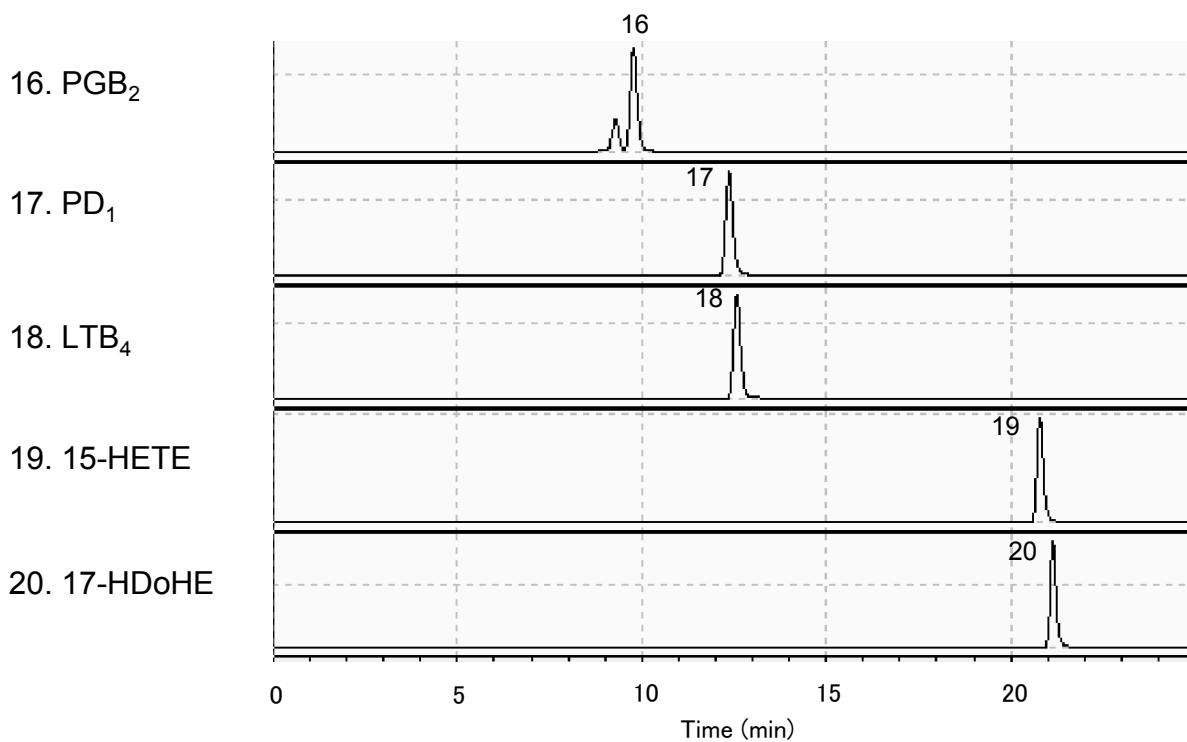
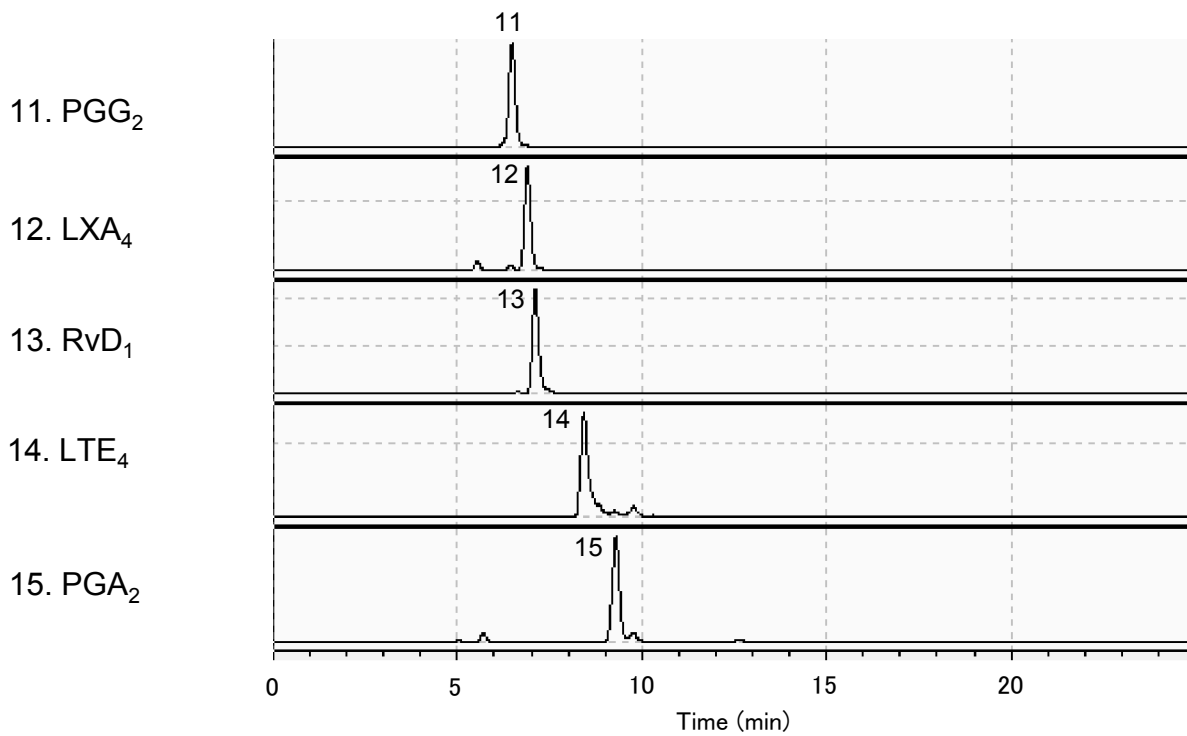
## Simultaneous analysis of lipid mediators using LC/MS/MS



# InertSearch™ for LC

Inertsil™ Applications

## Simultaneous analysis of lipid mediators using LC/MS/MS



# InertSearch™ for LC

Inertsil™ Applications

## Simultaneous analysis of lipid mediators using LC/MS/MS

