

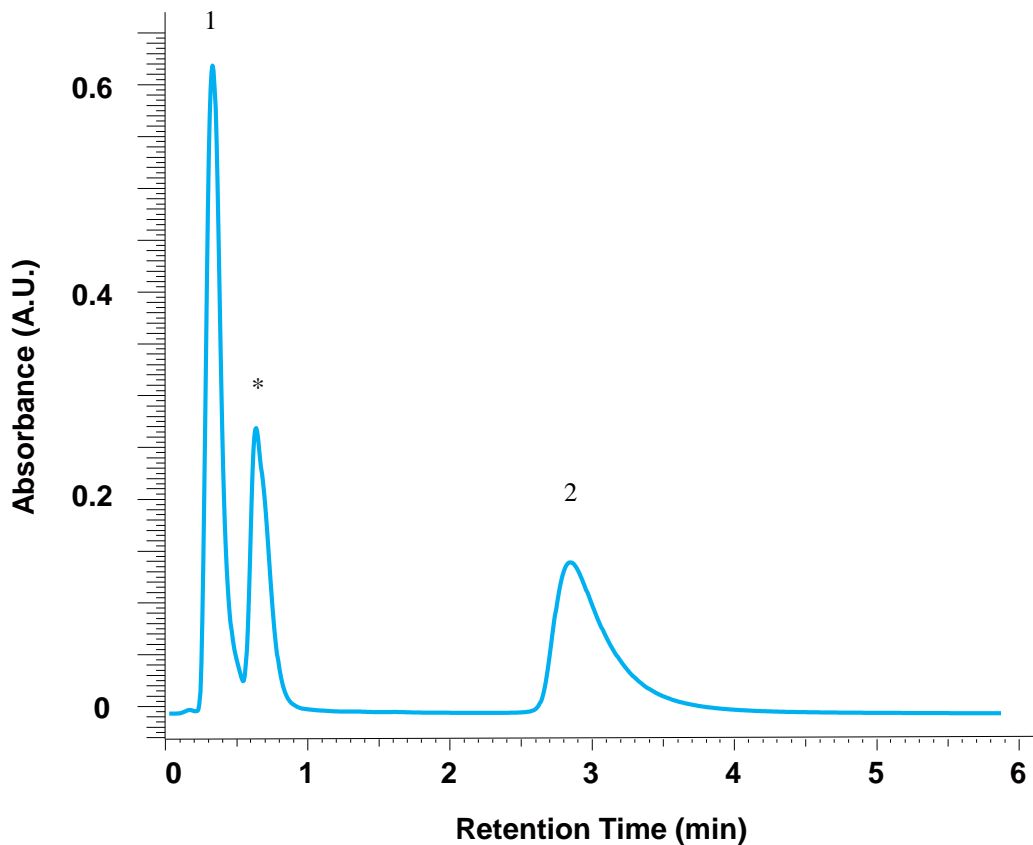
# InertSearch™ for LC

Inertsil™ Applications

## Analysis of Abraxane

Data No. LL032-0000

*The chromatograms were provided by Masaru Kato,  
School of Pharmacy, Showa University,  
1-5-8 Hatanodai, Shinagawa-ku, Tokyo, 142-8555, Japan*



### Conditions

**Column** : MonoSelect nPEC (50 x 3.0 mm I.D.)  
**Column Cat. No.** : 5020-10816  
**Eluent** : A) CH<sub>3</sub>OH  
          : B) 50 mM Na<sub>2</sub>SO<sub>4</sub> in 20 mM Acetate buffer (pH 4.6)  
          : A/B = 30/70, v/v  
**Flow rate** : 1.0 mL/min  
**Col. Temp.** : Room temperature (approx. 25 °C)  
**Detection** : UV 260 nm  
**Injection Vol.** : 10 μL

### Analyte:

1. Abraxane  
   (Nanoparticle albumin-bound paclitaxel)  
2. Paclitaxel  
\* Unknown peak