

# Analysis of Vitamin B1 by Post-column HPLC

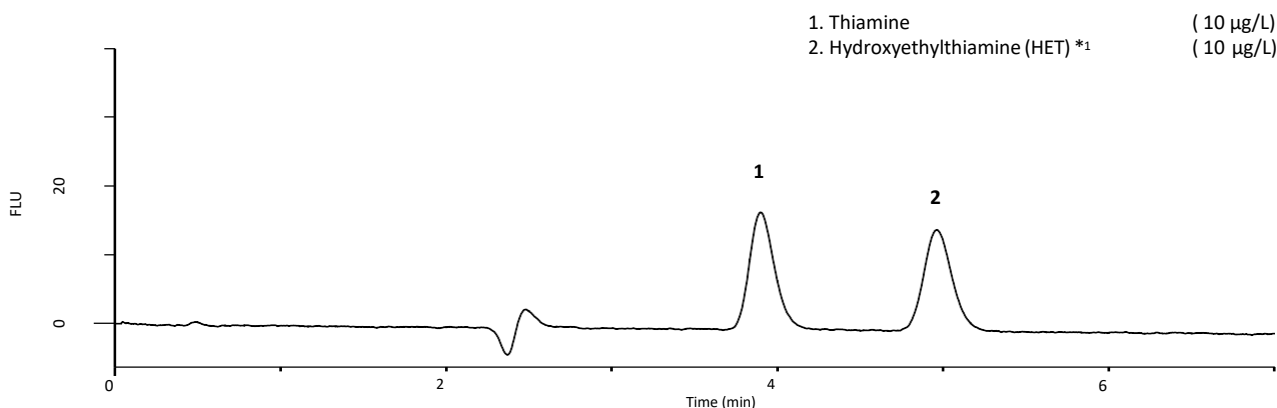
This note describes a determination method for Vitamin B1 (chemical name: thiamine) using HPLC coupled with post-column derivatization.

Vitamin B1 exists not only as free thiamine itself but also as its phosphate derivatives. In this note, to determine the total amount of vitamin B1, thiamine phosphate esters were converted to thiamine by utilizing enzymatic reaction. After purification procedures, the sample solutions were injected into the HPLC system.

Thiamine in injected solution is separated from other

compounds in the ODS column, reacted with potassium ferricyanide under alkaline condition, and determined by fluorescence detector with high sensitivity and selectivity.

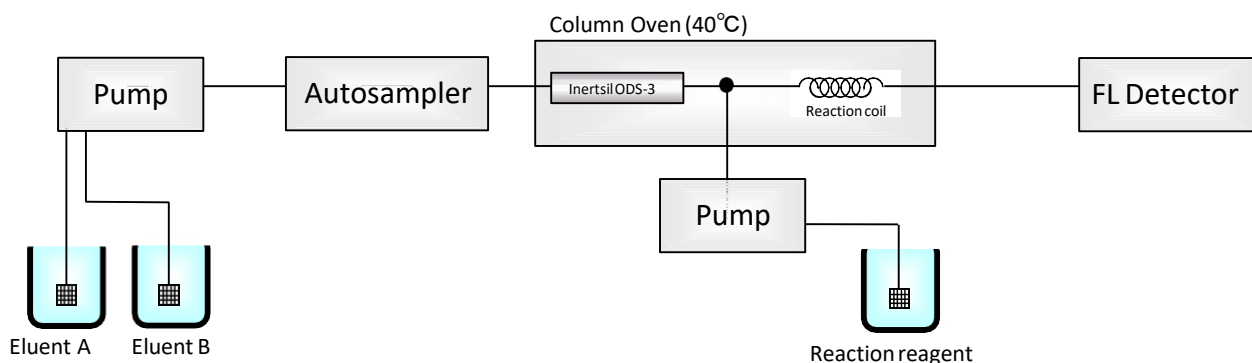
Sample pretreatment was performed with solid-phase extraction (SPE) instead of permutit (activated zeolite resin) method, which is established by Japanese Food Sanitation Inspection Guidelines. SPE is also described as reference method in the guidelines and offered easy way to remove impurities.



**A chromatogram obtained from standard solution**

\*1: Hydroxyethylthiamine is also included in vitamin B1.

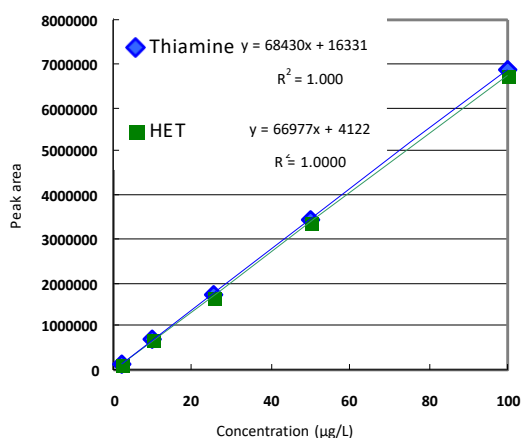
## A diagram for the HPLC system



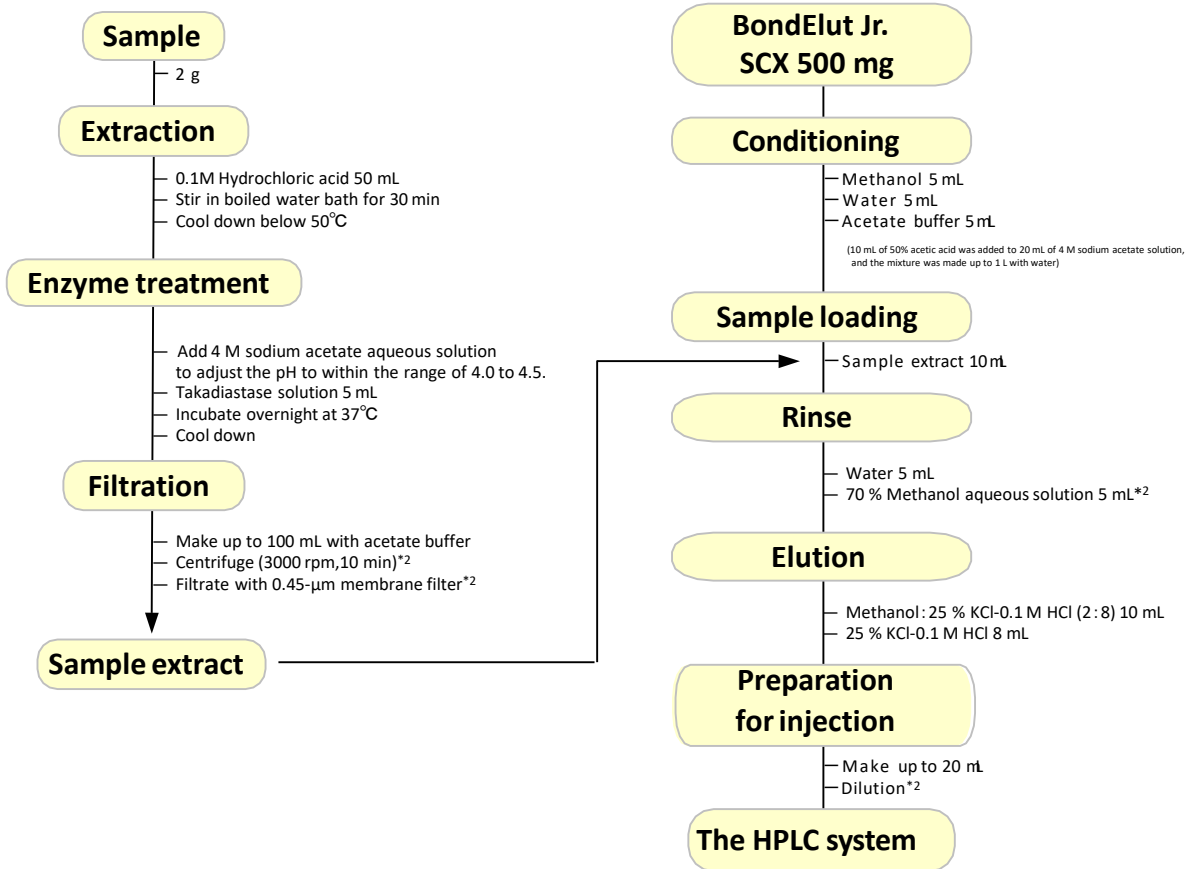
### Conditions

<b>Column</b>	Inertsil ODS-3 (5µm, 150 x 4.6 mm I.D.) Cat.No. 5020-01731
<b>Col. Temp.</b>	40°C
<b>Detection</b>	FL Ex. 375 nm, Em. 440 nm 20µL
<b>Inj. Vol.</b>	
<b>Eluent</b>	: A) CH <sub>3</sub> OH    B) Phosphate buffer* A/B = 1/9, v/v
<b>Flow rate</b>	: 0.8 mL/min
<b>Reaction reagent</b>	: 0.05 % (w/v) K <sub>3</sub> [Fe(CN) <sub>6</sub> ] and 15 % (w/v) NaOH aqueous solution, 0.4 mL/min
<b>Reaction coil</b>	: 5 m x 0.33 mm I.D.

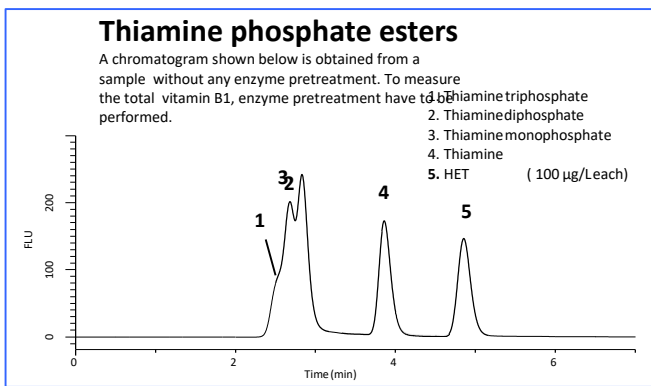
\* Phosphate buffer: To 0.01 M sodium dihydrogen phosphate aqueous solution, 0.15 M sodium perchlorate aqueous solution was added and adjusted the pH to 2.2.



The calibration curves



\*2: These procedures should be performed as necessary.



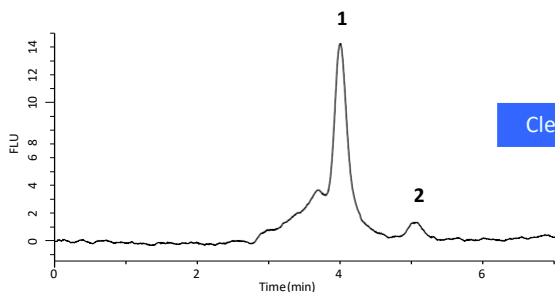
Recovery ratio of solid-phase extraction

	Thiamine	HET
Recovery (%)	98.8	99.3
CV (%)	1.6	1.5

(50 µg/L each in distilled water, n=5)

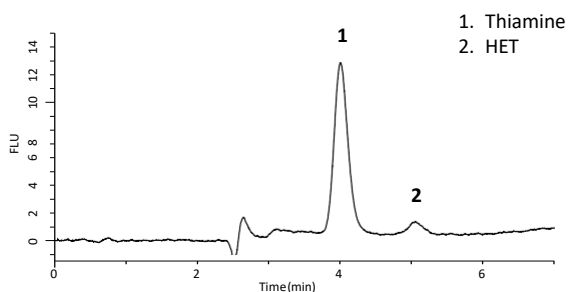
### The effect of solid-phase extraction (sample: extract from broiled eel)

A sample solution without solid-phase extraction



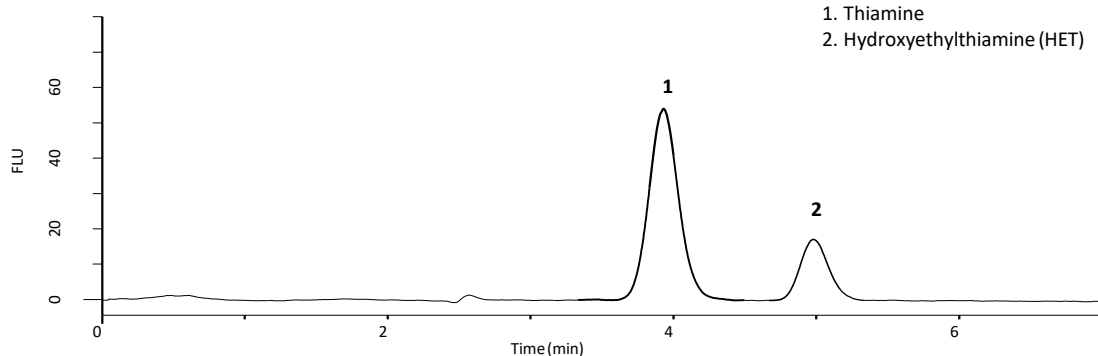
Clean up !

A sample solution after solid-phase extraction

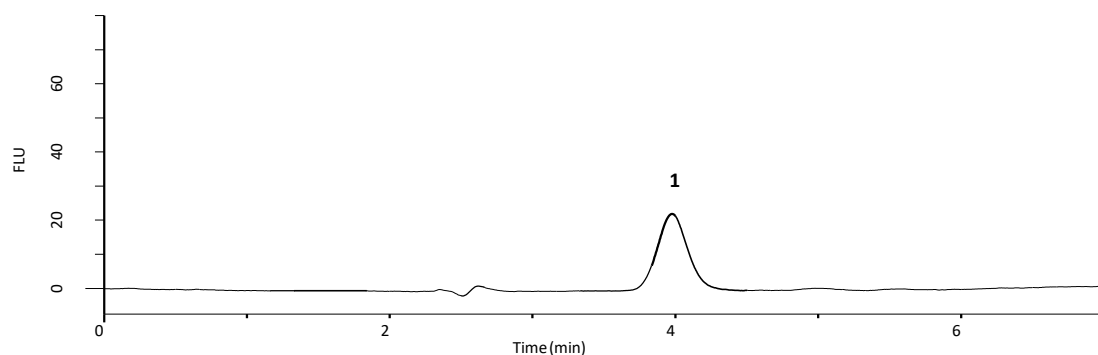


## Examples of vitamin B1 determination in food samples

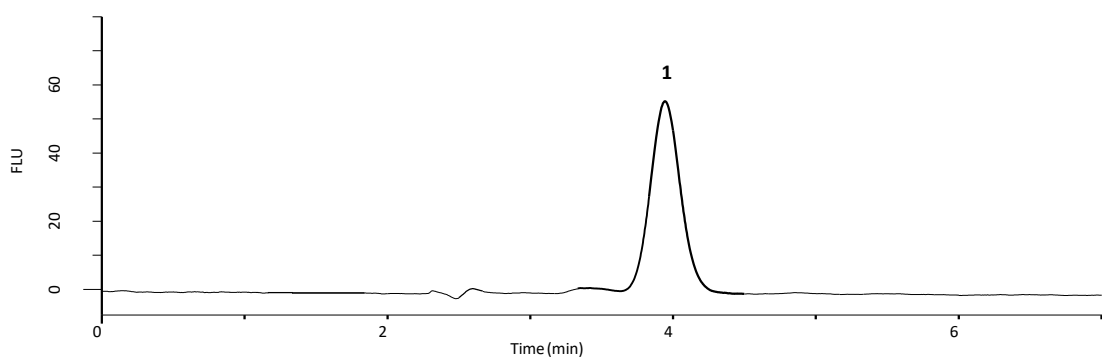
### Pork extract



### Spinach extract

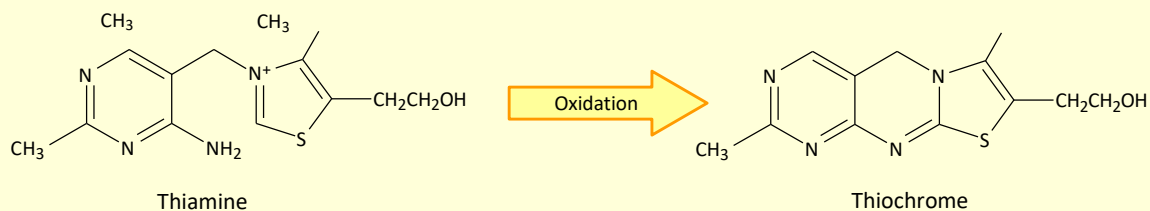


### Extract from powdered milk



## Thiochrome reaction

Thiochrome is a blue fluorescent compound and produced by the reaction of thiamine in alkaline solution with oxidizing agent, such as potassium ferricyanide or cyanogen bromide. The reaction is often used for the determination of vitamin B1.



## Inert Family

- “Inertsil” High Performance LC Column
- “InertCap” GC Capillary Column
- “InertSep” Solid Phase Extraction for pretreatment of analysis



GL Sciences disclaims any and all responsibility for any injury or damage which may be caused by this data directly or indirectly. We reserve the right to amend this information or data at any time and without any prior announcement.

### **GL Sciences, Inc. Japan**

22-1 Nishishinjuku 6-Chome  
Shinjuku-ku, Tokyo,  
163-1130, Japan  
Phone: +81-3-5323-6620  
Fax: +81-3-5323-6621  
Email: [world@glsc.co.jp](mailto:world@glsc.co.jp)  
Web: [www.glsciences.com](http://www.glsciences.com)

### **GL Sciences B.V.**

De Sleutel 9  
5652 AS Eindhoven  
The Netherlands  
Phone: +31 (0)40 254 95 31  
Email: [info@glsciences.eu](mailto:info@glsciences.eu)  
Web: [www.glsciences.eu](http://www.glsciences.eu)

### **GL Sciences (ShangHai) Ltd.**

Tower B, Room 2003,  
Far East International Plaza,  
NO,317 Xianxia Road,  
Changning District.  
Shanghai, China P.C. 200032  
Phone: +86 (0)21-6278-2272  
Email: [contact@glsciences.com.cn](mailto:contact@glsciences.com.cn)  
Web: [www.glsciences.com.cn](http://www.glsciences.com.cn)

### **GL Sciences, Inc. USA**

4733 Torrance Blvd. Suite 255  
Torrance, CA 90503  
Phone: 310-265-4424  
Fax: 310-265-4425  
Email: [info@glsciencesinc.com](mailto:info@glsciencesinc.com)  
Web: [www.glsciencesinc.com](http://www.glsciencesinc.com)

### **International Distributors**

Visit our Website at:

<https://www.glsciences.com/company/distributor.html>