

# Analysis of Glycyrrhizic Acid in Licorice According to the Japanese Pharmacopoeia

Licorice is a dried crude drug containing 2.5 % or more (under dry conditions) of from the roots of Glycyrrhiza (Glycyrrhiza uralensis Fishier, etc.).

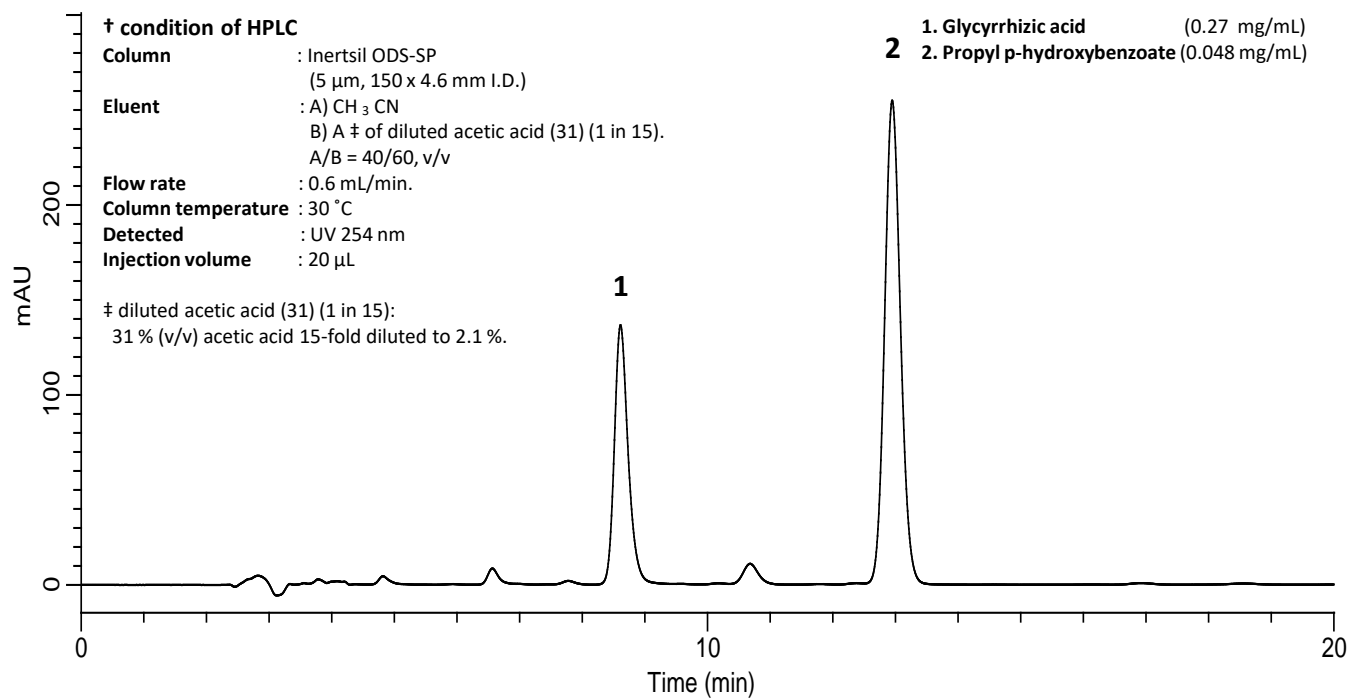
These drugs have anti-ulcer, anti-tussive, anti-allergic, and anti-inflammatory properties and are frequently incorporated into cold remedies, anti-inflammatory analgesics, and anti-diarrheal drugs. Glycyrrhizic acid, the main ingredient, has a considerable sweetness and is used as a sweetener in foods.

The Japanese Pharmacopoeia employs an ODS-column HPLC method for the determination of in licorice. The system compliance items listed below are also specified.

We are pleased to report that we have achieved this requirement.

(T. Fukaya)

## Example: measurement of standard



## System suitability test

When analyzed under the above HPLC conditions,

1. Elution is in the following order, glycyrrhizic acid and propyl parahydroxybenzoate
2. Each peak is completely separated.
3. For 5 repeat analyses, the relative standard deviation of the glycyrrhizic acid peak area is not more than 1.5 %.

## Our results

Elution order : Satisfies the provisions

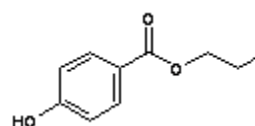
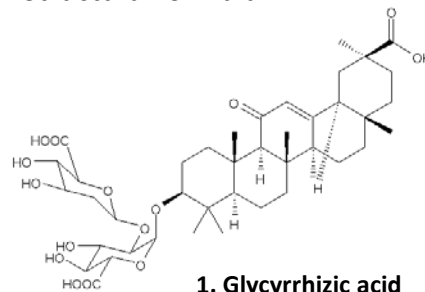
Resolution : Complete separation

Relative standard deviation : 0.33% (Table 1)

N	Area
1	16285407
2	16233767
3	16142486
4	16249604
5	16220029
Average	16226259
RSD (%)	0.325

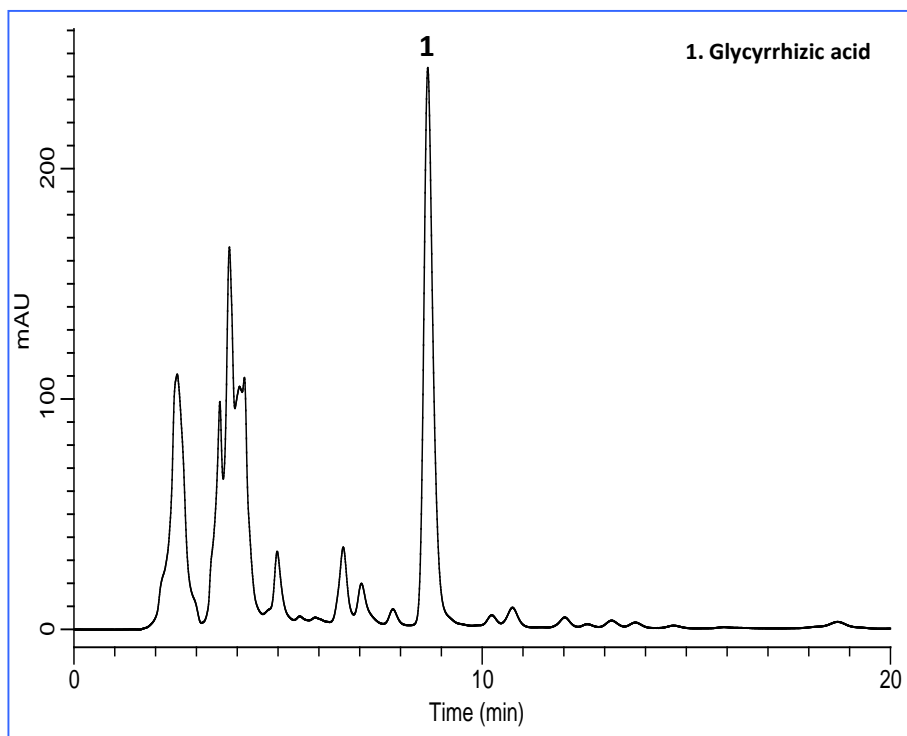
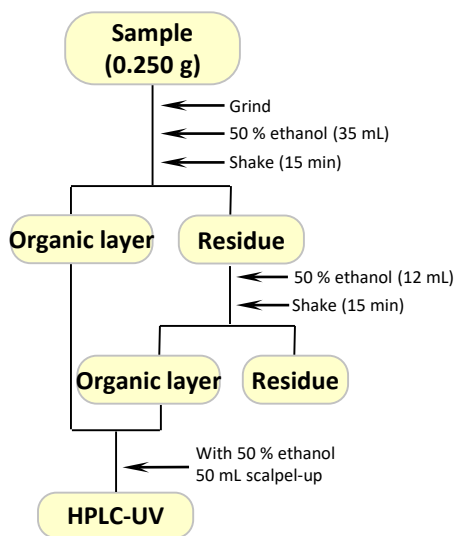
Table 1: Glycyrrhizic acid  
Area value reproducibility

## Structural formula



## Analysis of glycyrrhizic acid in commercial licorice

### Example of pretreatment



GL Sciences disclaims any and all responsibility for any injury or damage which may be caused by this data directly or indirectly. We reserve the right to amend this information or data at any time and without any prior announcement.

#### **GL Sciences, Inc. Japan**

22-1 Nishishinjuku 6-Chome  
Shinjuku-ku, Tokyo,  
163-1130, Japan  
Phone: +81-3-5323-6620  
Fax: +81-3-5323-6621  
Email: [world@glsc.co.jp](mailto:world@glsc.co.jp)  
Web: [www.glsciences.com](http://www.glsciences.com)

#### **GL Sciences B.V.**

De Sleutel 9  
5652 AS Eindhoven  
The Netherlands  
Phone: +31 (0)40 254 95 31  
Email: [info@glsciences.eu](mailto:info@glsciences.eu)  
Web: [www.glsciences.eu](http://www.glsciences.eu)

#### **GL Sciences (ShangHai) Ltd.**

Tower B, Room 2003,  
Far East International Plaza,  
NO,317 Xianxia Road,  
Changning District.  
Shanghai, China P.C. 200032  
Phone: +86 (0)21-6278-2272  
Email: [contact@glsciences.com.cn](mailto:contact@glsciences.com.cn)  
Web: [www.glsciences.com.cn](http://www.glsciences.com.cn)

#### **GL Sciences, Inc. USA**

4733 Torrance Blvd. Suite 255  
Torrance, CA 90503  
Phone: 310-265-4424  
Fax: 310-265-4425  
Email: [info@glsciencesinc.com](mailto:info@glsciencesinc.com)  
Web: [www.glsciencesinc.com](http://www.glsciencesinc.com)

#### **International Distributors**

Visit our Website at [www.glsciences.com/distributors](http://www.glsciences.com/distributors)