

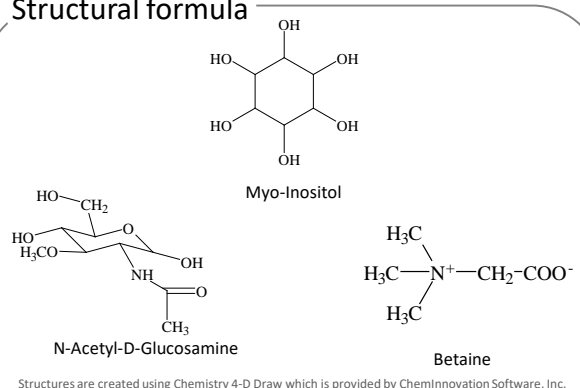
# Analysis of Betaine, myo-Inositol and N-acetyl-D-glucosamine in Food,

This application describes the analysis of N-acetyl-D-glucosamine, betaine, and myo-inositol in foods. These compounds are derived from natural products and used as food additives or supplements.

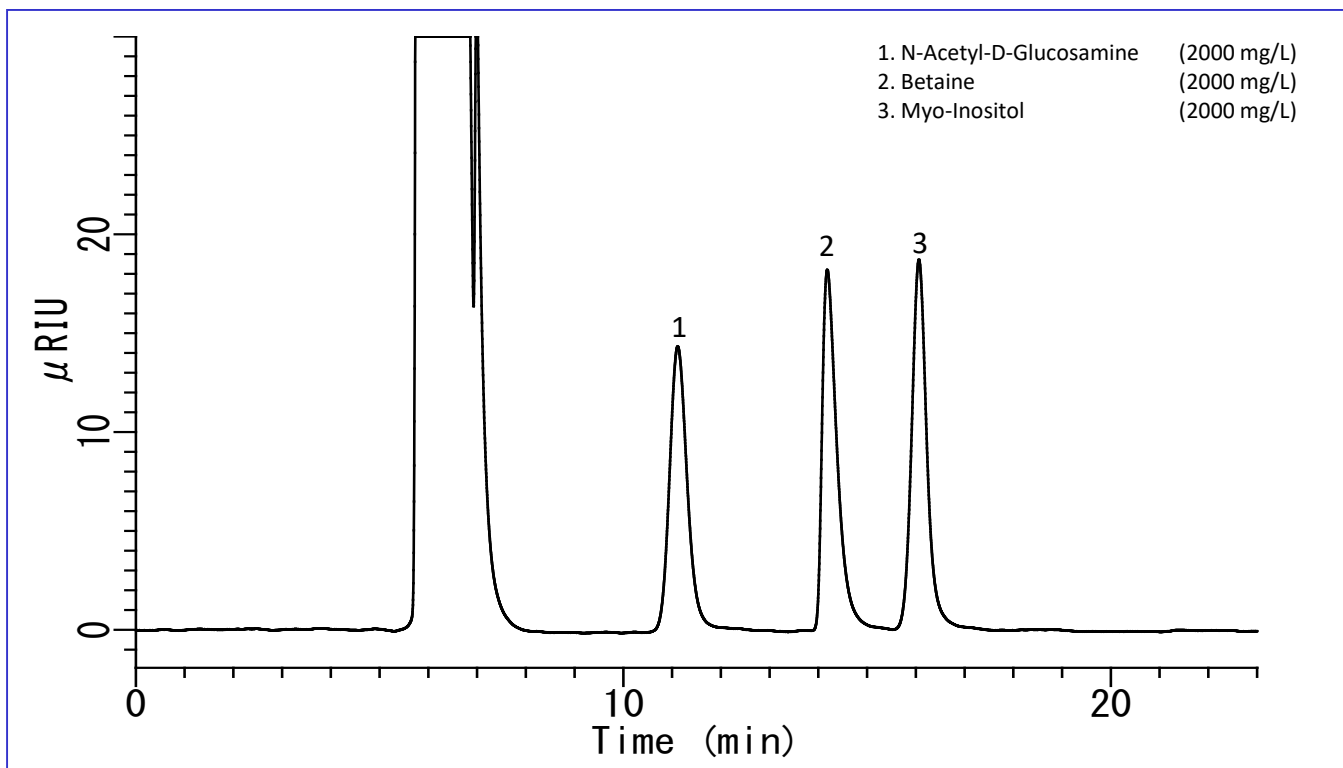
Analysis using Inertsil NH2 with aminopropyl groups offers good separations, and a differential refractive index detector is well suited to molecules with low UV absorption.

(K.Suzuki)

## Structural formula



## Example: Measurement of standard



### HPLC conditions

**Column** : Inertsil NH2  
(5 μm, 250 x 4.6 mm I.D.)

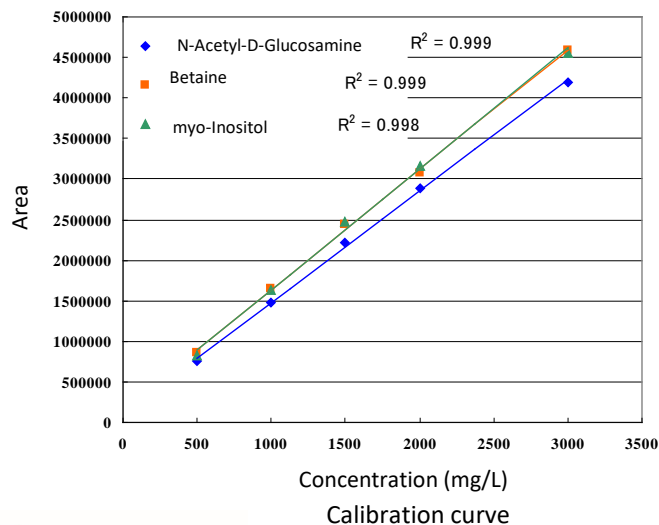
**Eluent** : A) CH<sub>3</sub>CN  
B) H<sub>2</sub>O  
A/B = 65/35, v/v

**Flow rate** : 0.5 mL/min

**Column temperature** : 40 °C

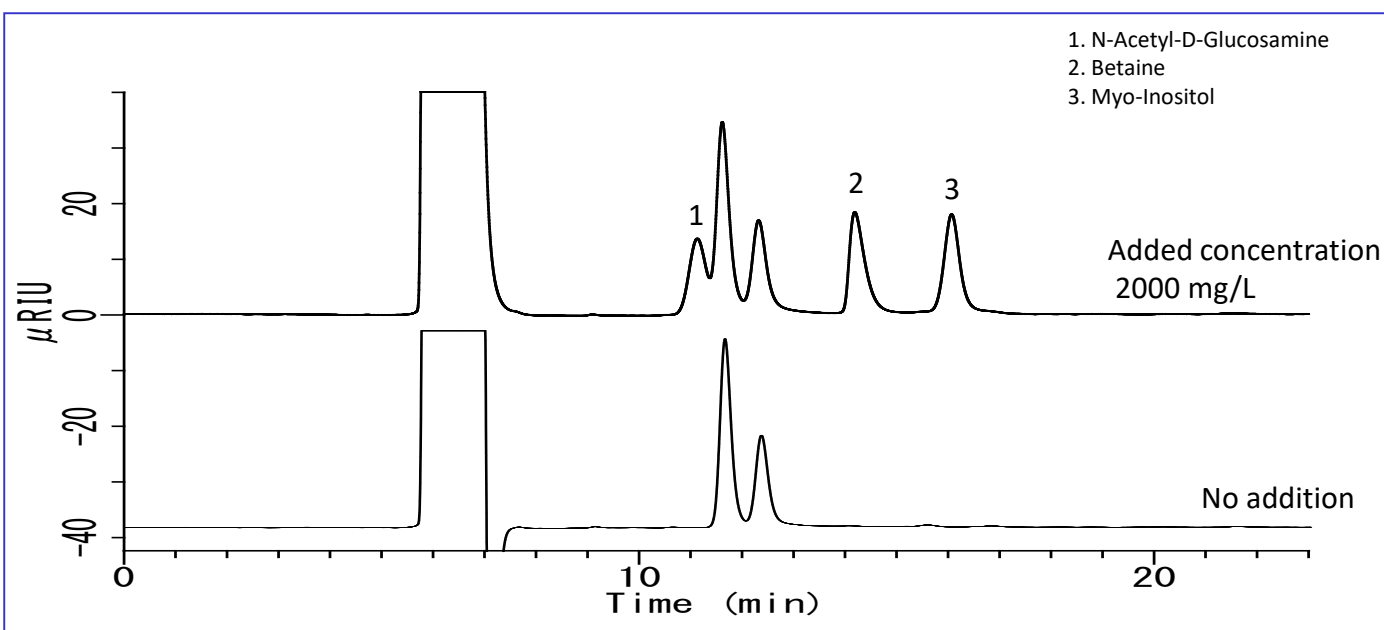
**Detection** : RI

**Injection volume** : 10 μL



## Examples of analysis of soft drinks

Soft drinks were filtered through a 0.45  $\mu\text{m}$  filter for analysis.



GL Sciences disclaims any and all responsibility for any injury or damage which may be caused by this data directly or indirectly. We reserve the right to amend this information or data at any time and without any prior announcement.

### **GL Sciences, Inc. Japan**

22-1 Nishishinjuku 6-Chome  
Shinjuku-ku, Tokyo,  
163-1130, Japan  
Phone: +81-3-5323-6620  
Fax: +81-3-5323-6621  
Email: [world@glsc.co.jp](mailto:world@glsc.co.jp)  
Web: [www.glsciences.com](http://www.glsciences.com)

### **GL Sciences B.V.**

De Sleutel 9  
5652 AS Eindhoven  
The Netherlands  
Phone: +31 (0)40 254 95 31  
Email: [info@glsciences.eu](mailto:info@glsciences.eu)  
Web: [www.glsciences.eu](http://www.glsciences.eu)

### **GL Sciences (ShangHai) Ltd.**

Tower B, Room 2003,  
Far East International Plaza,  
NO,317 Xianxia Road,  
Changning District.  
Shanghai, China P.C. 200032  
Phone: +86 (0)21-6278-2272  
Email: [contact@glsciences.com.cn](mailto:contact@glsciences.com.cn)  
Web: [www.glsciences.com.cn](http://www.glsciences.com.cn)

### **GL Sciences, Inc. USA**

4733 Torrance Blvd. Suite 255  
Torrance, CA 90503  
Phone: 310-265-4424  
Fax: 310-265-4425  
Email: [info@glsciencesinc.com](mailto:info@glsciencesinc.com)  
Web: [www.glsciencesinc.com](http://www.glsciencesinc.com)

### **International Distributors**

Visit our Website at [www.glsciences.com/distributors](http://www.glsciences.com/distributors)