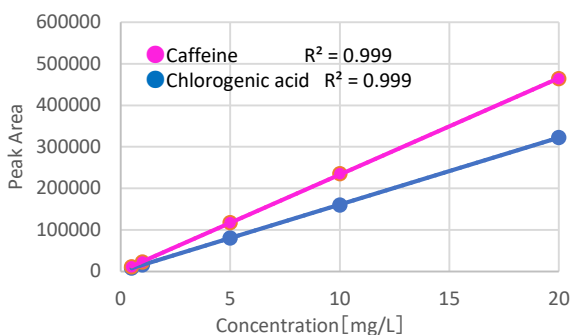


Chlorogenic acid is a type of polyphenol that is abundant in coffee, and is said to have an antioxidant effect, as well as an effect of suppressing the production of carcinogens and inactivating them, and various studies have been conducted. This time, coffee-containing components were analyzed using two columns, InertSustain AX-C18, which has two separation modes of reverse phase and ion exchange, and InertSustain AQ-C18, which is suitable for retaining highly polar compounds. We would like to report that we were able to successfully separate the chlorogenic acid peak and the contaminating component peak with InertSustain AX-C18. (R. Takahashi)

### Ex. Standard sample measurement



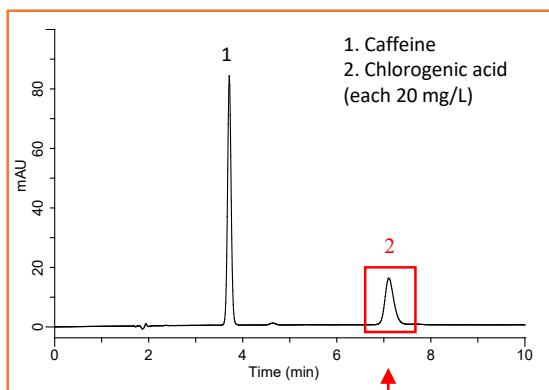
: Calibration curve (used InertSustain AX-C18)

#### Conditions

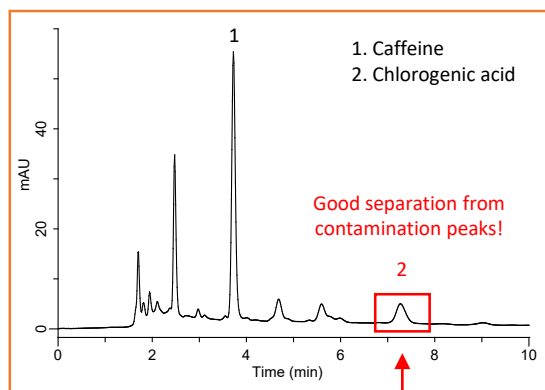
Column size : 5 mm, 150 × 4.6 mm I.D.  
 Eluent : A) CH<sub>3</sub>OH  
 B) 50 mM KH<sub>2</sub>PO<sub>4</sub> in H<sub>2</sub>O (pH 2.3 H<sub>3</sub>PO<sub>4</sub>)  
 A/B = 30/70, v/v  
 Flow rate : 1.0 mL/min  
 Col.Temp. : 40 °C  
 Detection : UV 280 nm  
 Inj.Vol. : 10 μL

### Ex. Analysis of commercial instant coffee

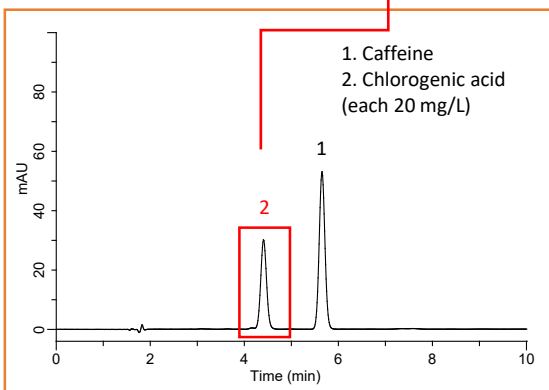
#### InertSustain AX-C18



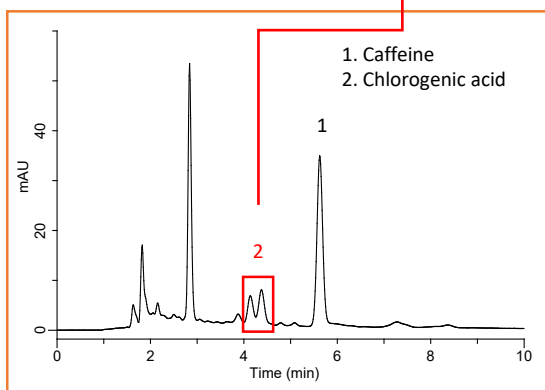
#### InertSustain AX-C18



#### InertSustain AQ-C18

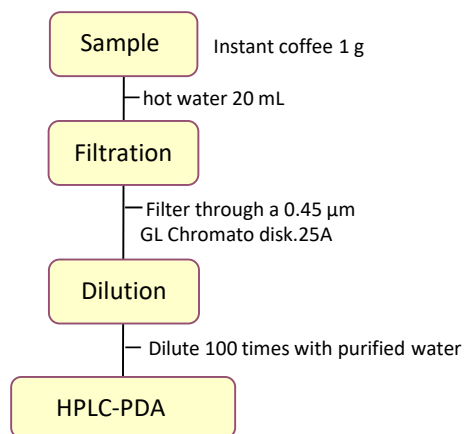


#### InertSustain AQ-C18

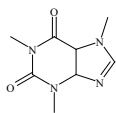


With InertSustain AX-C18, chlorogenic acid retention is enhanced by anion exchange action. On the other hand, caffeic acid, which has a relatively large pKa, becomes a non-dissociative type at pH 2.3, and is less likely to be adsorbed by anions.

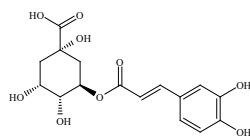
**Analysis example of commercial instant coffee at each pH using InertSustain AX-C18**



**Structural formula**

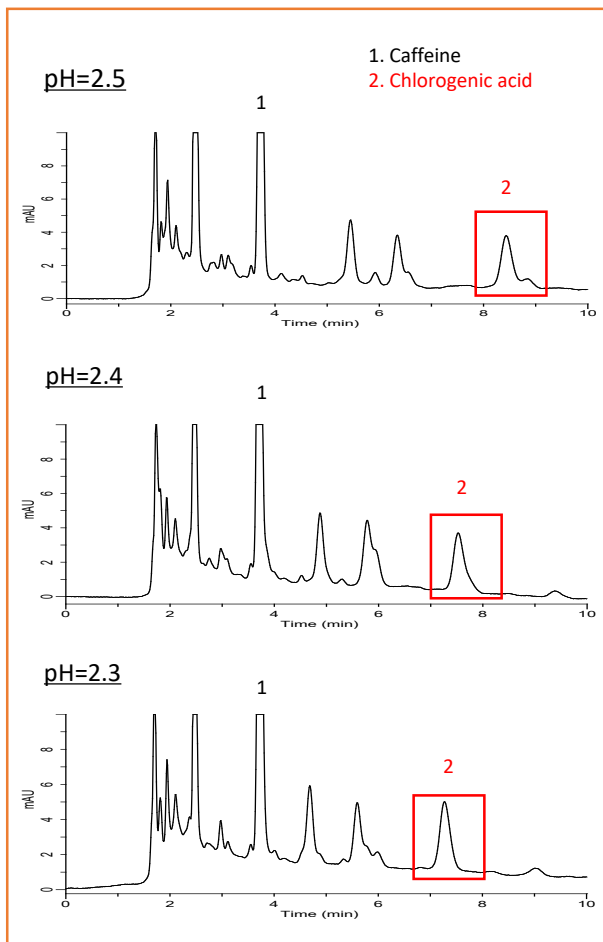


Caffeine



Chlorogenic acid

Structures are created using Chemistry 4-D Draw which is provided by ChemInnovation Software, Inc.



**HPLC Column**



InertSustain AX-C18  
(5 µm, 150 x 4.6 mm I.D.)  
Cat.No. 5020-91014

**GL Chromato Disk**

GL CHROMATO DISK 25A 0.45 µM (100 pcs)  
Cat.No. 5040-28512

GL Sciences disclaims any and all responsibility for any injury or damage which may be caused by this data directly or indirectly. We reserve the right to amend this information or data at any time and without any prior announcement.

**GL Sciences Inc. Japan**

22-1 Nishishinjuku 6-chome  
Shinjuku-ku, Tokyo  
163-1130, Japan

Phone: +81-3-5323-6620  
Fax: +81-3-5323-6621  
Email: [world@glsc.co.jp](mailto:world@glsc.co.jp)  
Web: [www.glsciences.com](http://www.glsciences.com)

**GL Sciences Inc. USA**

4733 Torrance Blvd. Suite 255  
Torrance, CA 90503  
USA

Phone: +1-310-265-4424  
Fax: +1-310-265-4425  
Email: [info@glsciencesinc.com](mailto:info@glsciencesinc.com)  
Web: [www.glsciencesinc.com](http://www.glsciencesinc.com)

**GL Sciences B.V.**

Dillenburgstraat 7C  
5652AM, Eindhoven  
The Netherlands

Phone: +31-40-254-9531  
Email: [info@glsciences.eu](mailto:info@glsciences.eu)  
Web: [www.glsciences.eu](http://www.glsciences.eu)

**GL Sciences (Shanghai) Limited**

Tower B, Room 2003  
Far East International Plaza  
No.317 Xianxia Road, Changning District  
Shanghai, China 200051

Phone: +86-21-62782272  
Email: [contact@glsciences.com.cn](mailto:contact@glsciences.com.cn)  
Web: [www.glsciences.com.cn](http://www.glsciences.com.cn)



**International Distributors**

Visit our Website at [www.glsciences.com/distributors](http://www.glsciences.com/distributors)