

In 2007, pet foods imported from China caused serious illnesses or deaths in a large number of cats and dogs. US Food and Drug Administration reported that melamine was found in the pet foods as well as in urine of affected animals. Moreover, in 2008, milk and infant formula adulterated with melamine caused kidney stones and other renal failure, especially among young children.

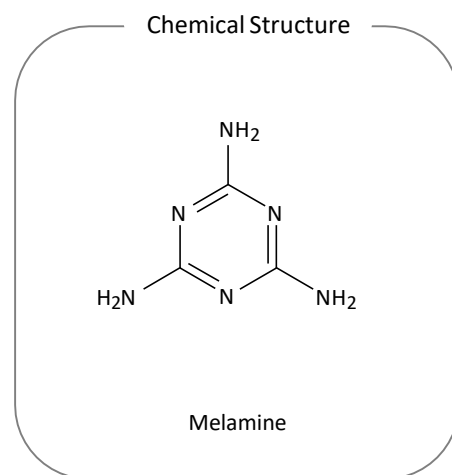
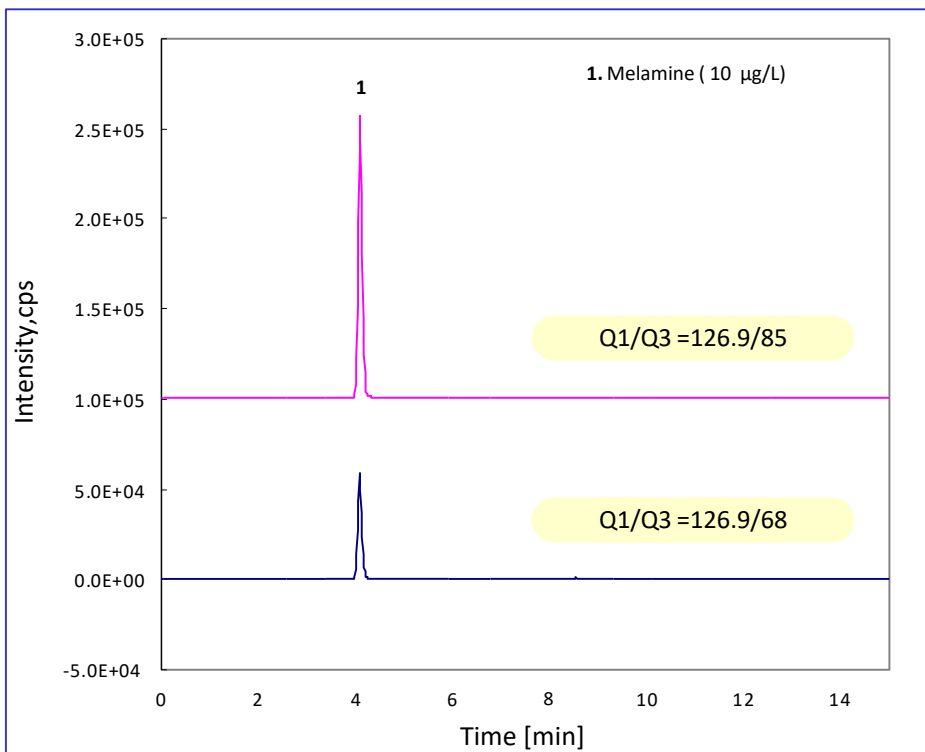
Since melamine is very hydrophilic compound, it is

difficult to retain and analyze melamine using ODS columns. It is also undesirable to use ion-pair reagents because the sensitivity is reduced in LC/MS/MS detection.

In this note, Inertsil HILIC (hydrophilic interaction chromatography) was used as a separation column. Melamine was successfully retained and determined with good linearity.

(K.Suzuki)

A chromatogram obtained from standard solution



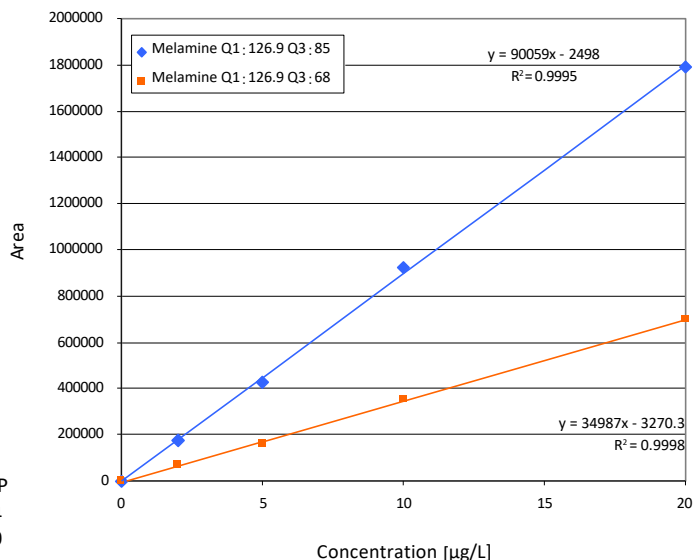
HPLC Conditions

System : LC800
Column : Inertsil HILIC (5 µm, 150 x 3.0 mm I.D.) Cat.No. 5020-07715
 : A) CH₃CN
Eluents B) 10 mM ammonium acetate
 A / B = 85 / 15 — 0.5 min — 85 / 15 — 6.5 min — 50 / 50
 (equilibration for 8 min), v/v
 : 0.5 mL/min
Flow rate : 40 °C
Col. Temp. : MRM (SRM)
Detection : 5 µL
Inj. Vol.

MS/MS (MRM) Conditions

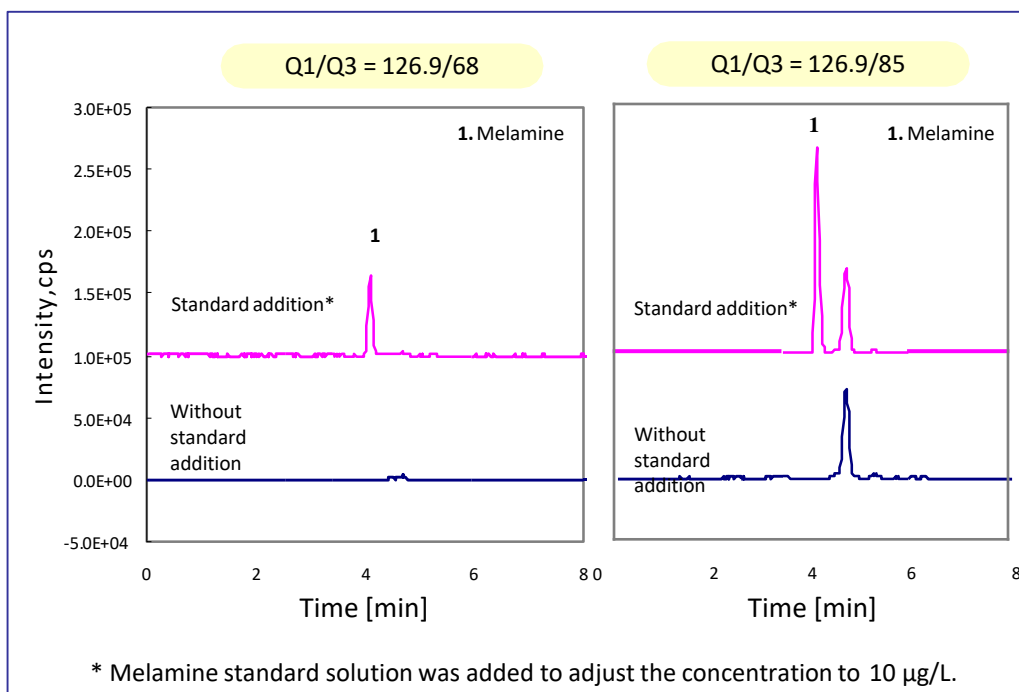
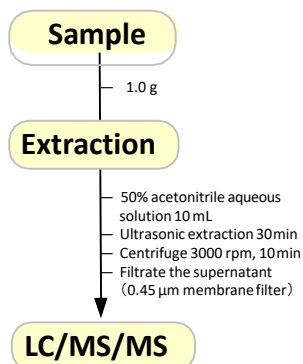
System : API-4000 Q TRAP (Applied Biosystems Japan Ltd.)
Detection : Compound Q1 Q3 DP EP CE CXP
 Melamine 126.9 85 41 10 27 14
 126.9 68 41 10 41 10

Ion source : ESI (Posi) CUR CAD IS TEM GS1 GS2
 10 8 5500 700 60 30



The calibration curves for melamine

An example of sample pretreatment



GL Sciences disclaims any and all responsibility for any injury or damage which may be caused by this data directly or indirectly. We reserve the right to amend this information or data at any time and without any prior announcement.

GL Sciences, Inc. Japan

22-1 Nishishinjuku 6-Chome
Shinjuku-ku, Tokyo,
163-1130, Japan
Phone: +81-3-5323-6620
Fax: +81-3-5323-6621
Email: world@glsc.co.jp
Web: www.glsciences.com

GL Sciences B.V.

De Sleutel 9
5652 AS Eindhoven
The Netherlands
Phone: +31 (0)40 254 95 31
Email: info@glsciences.eu
Web: www.glsciences.eu

GL Sciences (ShangHai) Ltd.

Tower B, Room 2003,
Far East International Plaza,
NO,317 Xianxia Road,
Changning District.
Shanghai, China P.C. 200032
Phone: +86 (0)21-6278-2272
Email: contact@glsciences.com.cn
Web: www.glsciences.com.cn

GL Sciences, Inc. USA

4733 Torrance Blvd. Suite 255
Torrance, CA 90503
Phone: 310-265-4424
Fax: 310-265-4425
Email: info@glsciencesinc.com
Web: www.glsciencesinc.com

International Distributors

Visit our Website at:

<https://www.glsciences.com/company/distributor.html>