

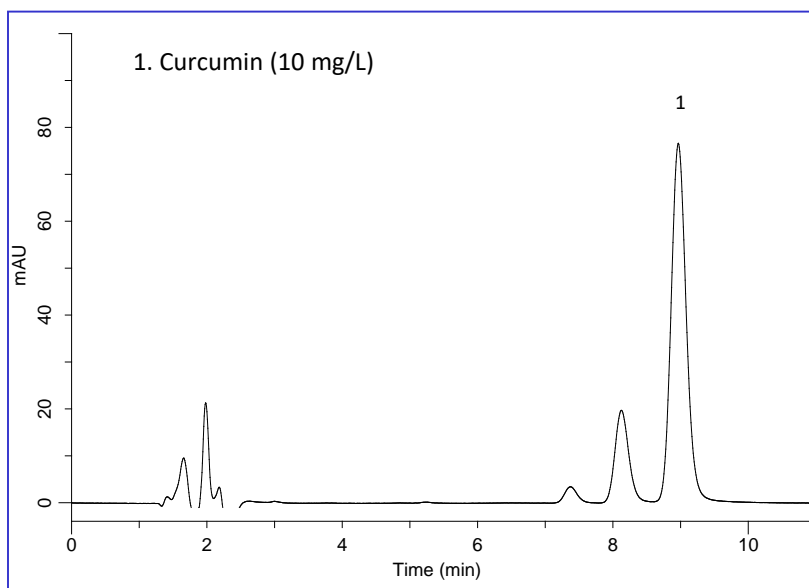
Curcumin, a yellow pigment found in turmeric, is a type of polyphenol. Curcumin, also known as turmeric (Turmeric) and is commonly used as a spice in foods such as curry. Indications include hangover prevention, as well as antioxidant and anticancer effects, bile secretion and strengthened liver function. It is also said to have anti-inflammatory properties.

In this application, the samples measured were nutrient drinks containing turmeric.

Commercially available curcumin reference standards may contain impurities, but the use of Inertsil ODS-4 has enabled good separation of the impurities from curcumin.

(Y.Tanaka)

## Example: Measurement of standard



### HPLC conditions

**Column** : Inertsil ODS-4  
(5  $\mu\text{m}$ , 150 x 3.0 mm I.D.)

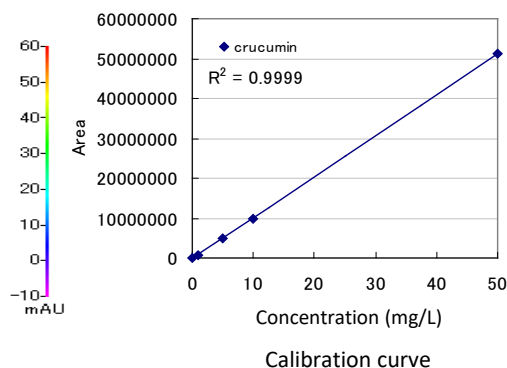
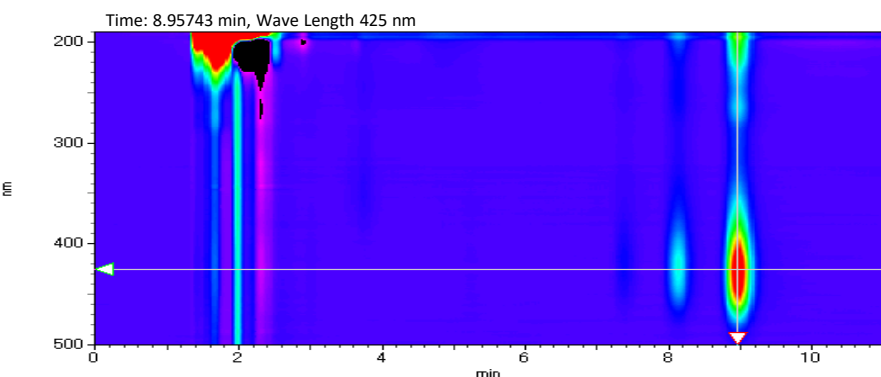
**Eluent** : A) CH<sub>3</sub>CN  
B) H<sub>2</sub>O  
A/B = 50/50, v/v  
(Mixed by a gradient mixer)

**Flow rate** : 0.4 mL/min

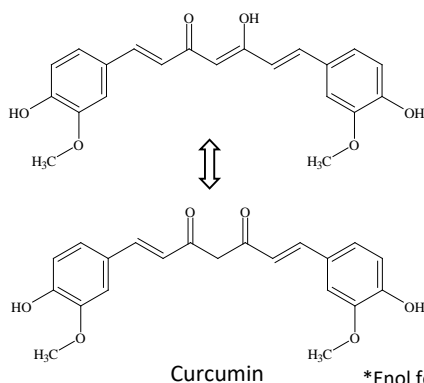
**Column temperature** : 40 °C

**Detected** : PDA 425 nm

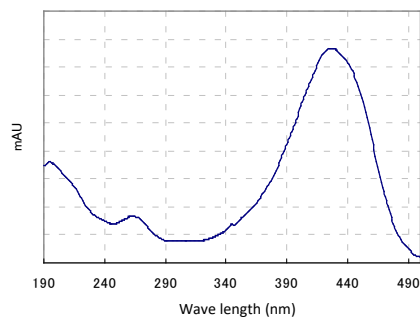
**Injection volume** : 10  $\mu\text{L}$



## Structural formula and UV spectrum



\*Enol form is stable in liquid

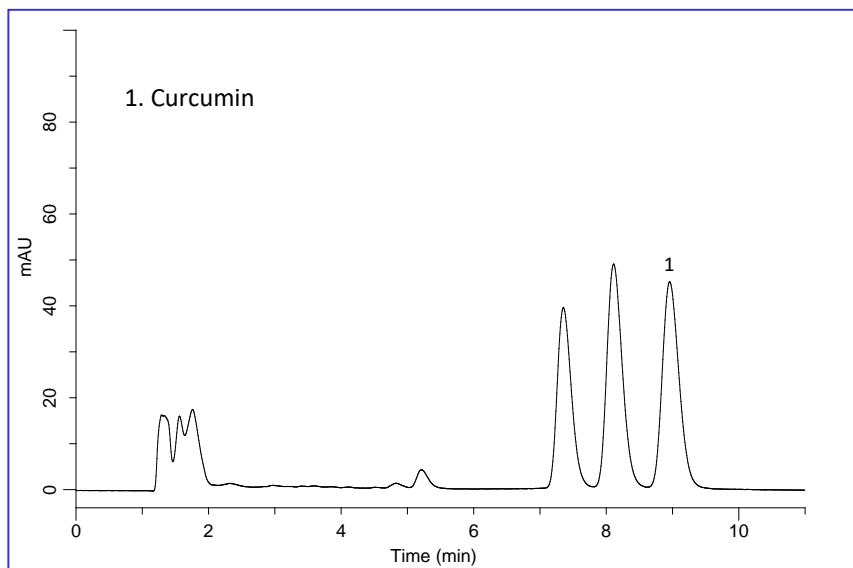


Measurement under analytical conditions

## Example of analysis of nutrient drinks

### Example of pretreatment

Samples were filtered through a 0.45 µm filter (chromatodisk) prior to injection.



GL Sciences disclaims any and all responsibility for any injury or damage which may be caused by this data directly or indirectly. We reserve the right to amend this information or data at any time and without any prior announcement.

#### **GL Sciences, Inc. Japan**

22-1 Nishishinjuku 6-Chome  
Shinjuku-ku, Tokyo,  
163-1130, Japan  
Phone: +81-3-5323-6620  
Fax: +81-3-5323-6621  
Email: [world@glsc.co.jp](mailto:world@glsc.co.jp)  
Web: [www.glsciences.com](http://www.glsciences.com)

#### **GL Sciences B.V.**

De Sleutel 9  
5652 AS Eindhoven  
The Netherlands  
Phone: +31 (0)40 254 95 31  
Email: [info@glsciences.eu](mailto:info@glsciences.eu)  
Web: [www.glsciences.eu](http://www.glsciences.eu)

#### **GL Sciences (ShangHai) Ltd.**

Tower B, Room 2003,  
Far East International Plaza,  
NO,317 Xianxia Road,  
Changning District.  
Shanghai, China P.C. 200032  
Phone: +86 (0)21-6278-2272  
Email: [contact@glsciences.com.cn](mailto:contact@glsciences.com.cn)  
Web: [www.glsciences.com.cn](http://www.glsciences.com.cn)

#### **GL Sciences, Inc. USA**

4733 Torrance Blvd. Suite 255  
Torrance, CA 90503  
Phone: 310-265-4424  
Fax: 310-265-4425  
Email: [info@glsciencesinc.com](mailto:info@glsciencesinc.com)  
Web: [www.glsciencesinc.com](http://www.glsciencesinc.com)

#### **International Distributors**

Visit our Website at [www.glsciences.com/distributors](http://www.glsciences.com/distributors)