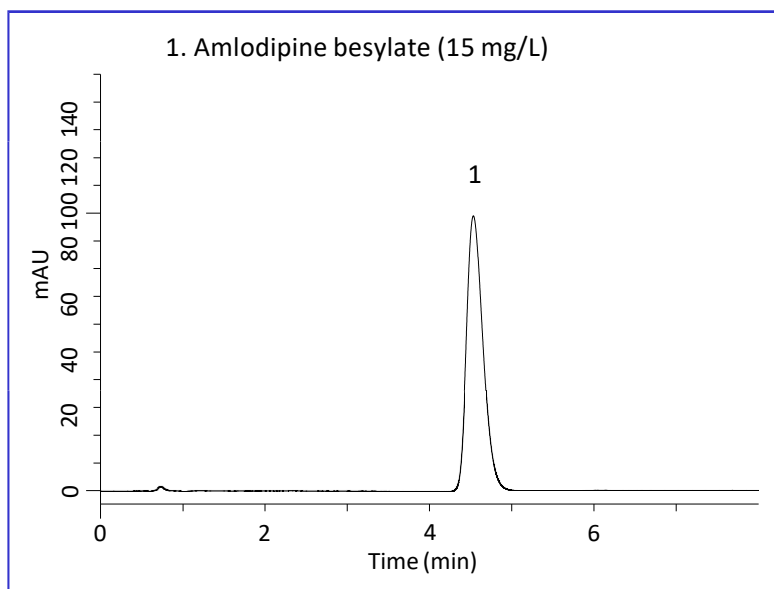


Amlodipine is an antihypertensive and a member of dihydropyridine class of calcium channel blockers. It relaxes the smooth muscle in the arterial wall by inhibiting calcium influx across cell membrane. Consequently, peripheral resistance is decreased, and blood pressure is reduced.

In this note, chromatograms of amlodipine based on the condition described in the United States Pharmacopeia (USP) are shown. Using

Inertsil ODS-4, sharp peak was obtained from tablet samples as well as standard solution.

## A chromatogram obtained from standard solution

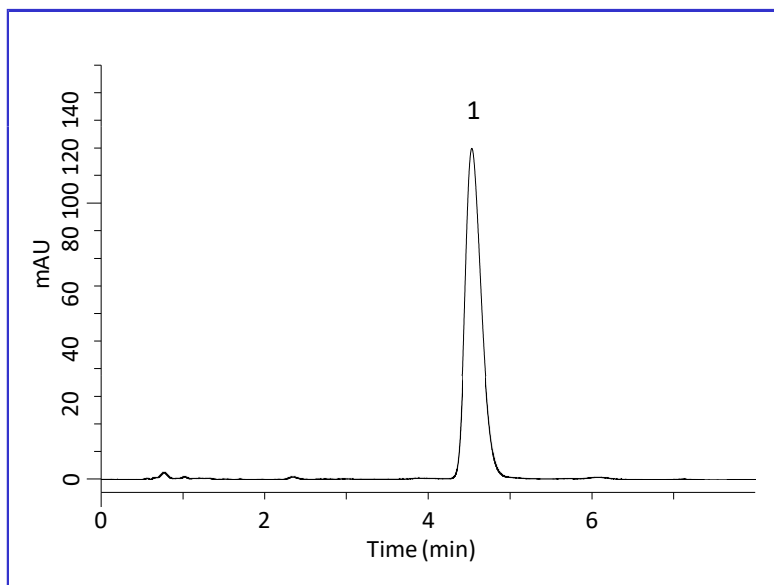


### HPLC Conditions

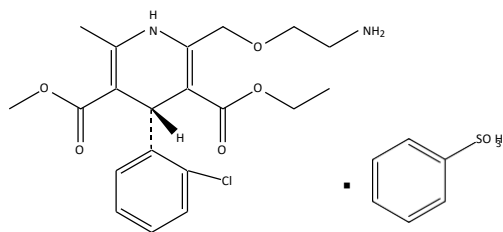
<b>Column</b>	: Inertsil ODS-4 HP (3 $\mu$ m, 50 x 4.6 mm I.D.)
<b>Column Cat. No.</b>	: 5020-14068
<b>Eluent</b>	: A) CH <sub>3</sub> OH B) CH <sub>3</sub> CN C) 0.7 % Triethylamine in H <sub>2</sub> O (pH 3, H <sub>3</sub> PO <sub>4</sub> ) A/B/C = 7/3/10, v/v/v
<b>Flow rate</b>	: 1.0 mL/min
<b>Col. Temp.</b>	: 25 °C
<b>Detection</b>	: UV 237 nm
<b>Inj. Volume</b>	: 70 $\mu$ L

## A chromatogram obtained from tablet sample

The sample concentration was adjusted to 20 mg/L as amlodipine besylate.

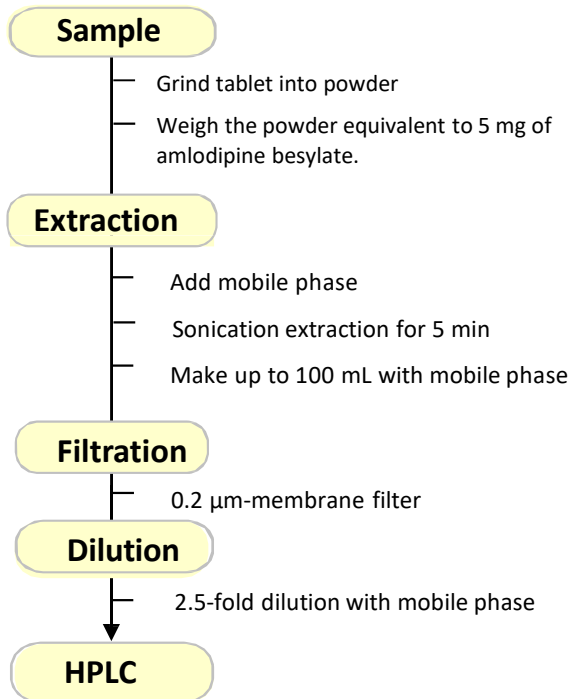


## Chemical Structure



Structures are created using Chemistry 4-D Draw which is provided by ChemInnovation Software, Inc.

## A Sample Pretreatment Method for Tablet Sample



GL Sciences disclaims any and all responsibility for any injury or damage which may be caused by this data directly or indirectly. We reserve the right to amend this information or data at any time and without any prior announcement.

### GL Sciences, Inc. Japan

22-1 Nishishinjuku 6-Chome  
Shinjuku-ku, Tokyo,  
163-1130, Japan

Phc  
Fax **Inertsil Ph-3**

Email: [world@glsc.com.jp](mailto:world@glsc.com.jp)

Web: [www.glsciences.com](http://www.glsciences.com)

### GL Sciences B.V.

De Sleutel 9  
5652 AS Eindhoven  
The Netherlands

Phone: +31 (0)40 254 95 31  
Email: [info@glsciences.eu](mailto:info@glsciences.eu)

Web: [www.glsciences.eu](http://www.glsciences.eu)

### GL Sciences (ShangHai) Ltd.

Tower B, Room 2003,  
Far East International Plaza,  
NO,317 Xianxia Road,  
Changning District.

Shanghai, China P.C. 200032

Phone: +86 (0)21-6278-2272

Email: [contact@glsciences.com.cn](mailto:contact@glsciences.com.cn)

Web: [www.glsciences.com.cn](http://www.glsciences.com.cn)

### GL Sciences, Inc. USA

4733 Torrance Blvd. Suite 255  
Torrance, CA 90503

Phone: 310-265-4424

Fax: 310-265-4425

Email: [info@glsciencesinc.com](mailto:info@glsciencesinc.com)

Web: [www.glsciencesinc.com](http://www.glsciencesinc.com)

### International Distributors

Visit our Website at:

<https://www.glsciences.com/company/distributor.html>